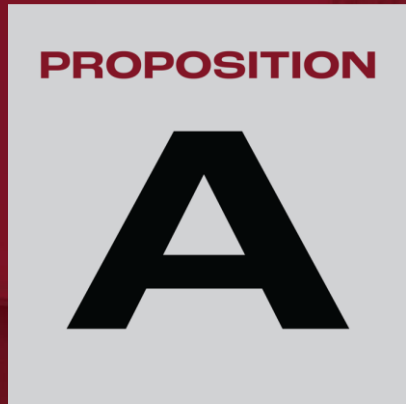




NORTHWEST ISD
BOND
2021

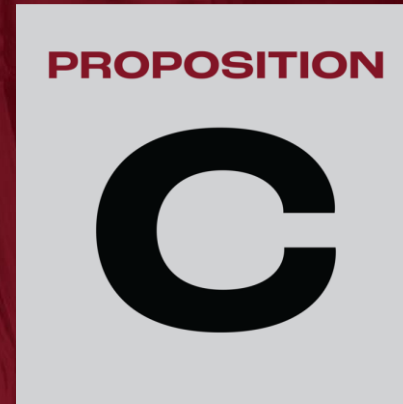
The May 1, 2021 Bond Election was presented to voters in four separate propositions.



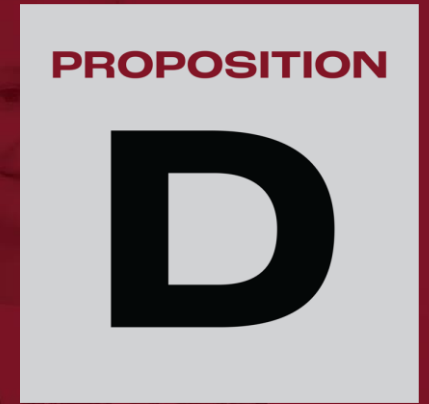
**SCHOOL
FACILITIES &
CAPITAL
IMPROVEMENTS
\$712,400,000**



**STADIUM
RENOVATIONS
\$8,200,000**



**MIDDLE SCHOOL
RECREATIONAL
FACILITIES
\$5,700,000**

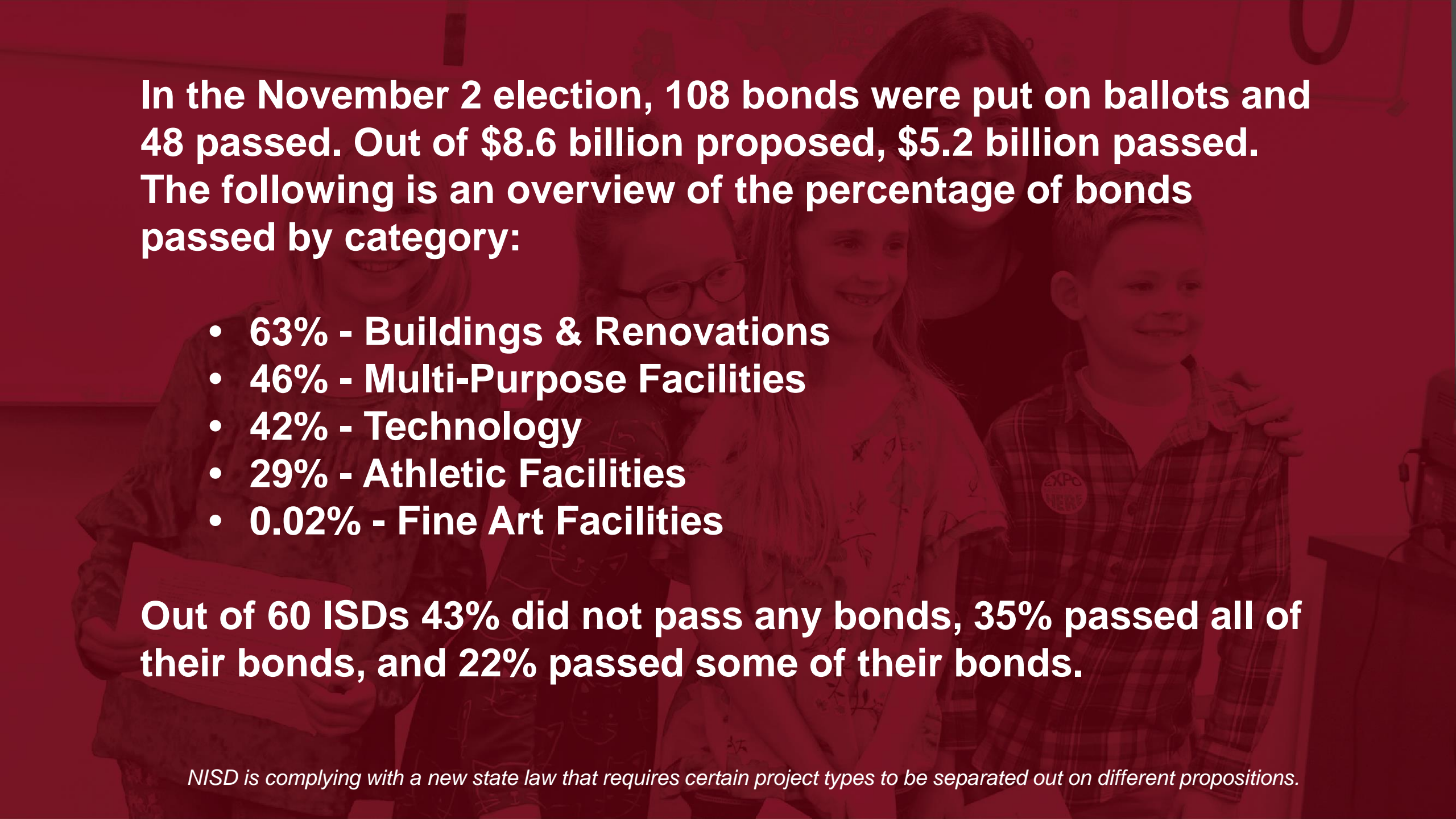


**TECHNOLOGY
DEVICES
\$19,400,000**

TOTAL BOND AMOUNT APPROVED: \$737,500,000

No Change to the Tax Rate

NISD is complying with a new state law that requires certain project types to be separated out on different propositions.

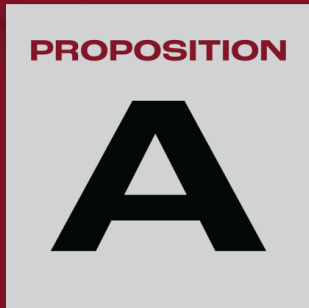


In the November 2 election, 108 bonds were put on ballots and 48 passed. Out of \$8.6 billion proposed, \$5.2 billion passed. The following is an overview of the percentage of bonds passed by category:

- **63% - Buildings & Renovations**
- **46% - Multi-Purpose Facilities**
- **42% - Technology**
- **29% - Athletic Facilities**
- **0.02% - Fine Art Facilities**

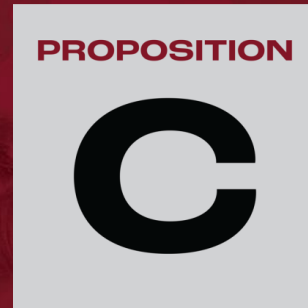
Out of 60 ISDs 43% did not pass any bonds, 35% passed all of their bonds, and 22% passed some of their bonds.

NISD is complying with a new state law that requires certain project types to be separated out on different propositions.



New Facilities & Capital Projects

- Elementary Schools #22, 23
- Middle School #7
- Replacement schools: Hatfield and Seven Hills elementary schools, Pike Middle School
- Northwest High School Expansion
- Pre-K Classrooms
- Land for future schools
- Buses



Middle School Recreation Facilities

- Tennis courts, athletic field and track at Middle School #7
- Tennis court resurfacing at four middle schools
- Tennis courts added to Medlin Middle School

Recreation facilities for Middle School #7 and technology devices for all new schools were required to be placed on separate ballot propositions because of new state law.



Technology Devices

- New student devices
- New teacher devices

Proposition A

SCHOOL FACILITIES & CAPITAL IMPROVEMENTS: \$712,400,000

GROWTH

- New Elementary School #22
- New Elementary School #23
- Middle School #7
- Replacement School for Hatfield Elementary School
- Replacement School for Seven Hills Elementary School
- Replacement School for Pike Middle school
- Northwest High School Additions and Renovations
- Classroom Additions to Satisfy State Mandated Full Day Pre-K
- Land Acquisition for New Schools
- New Buses

CAPITAL IMPROVEMENTS & RENOVATIONS

- Infrastructure Lifecycle Replacements (roofs, flooring, HVAC, fire alarms)
- Repurpose Hatfield Elementary School for Centralized Administrative Use
- Administration Building End-of-Life Renovations
- West Operations Facility Additions and Renovations

EQUITY & EVOLVING NEEDS

- Middle School Program Standardization
- Elementary Playground Equity and Safety

SAFETY & SECURITY

- Access Control, Public Address and Cameras

TECHNOLOGY INFRASTRUCTURE

- Fiber and Equipment

Propositions C, and D

Proposition C



**Middle School
Recreational Facilities:
\$5,700,000**

- Tennis Courts, Athletic Field and Track at Middle School #7 (school building in Prop. A)
- Tennis Court Resurfacing at 4 Middle School campuses
- Add Tennis Courts at Medlin Middle School (currently do not have)

Proposition D

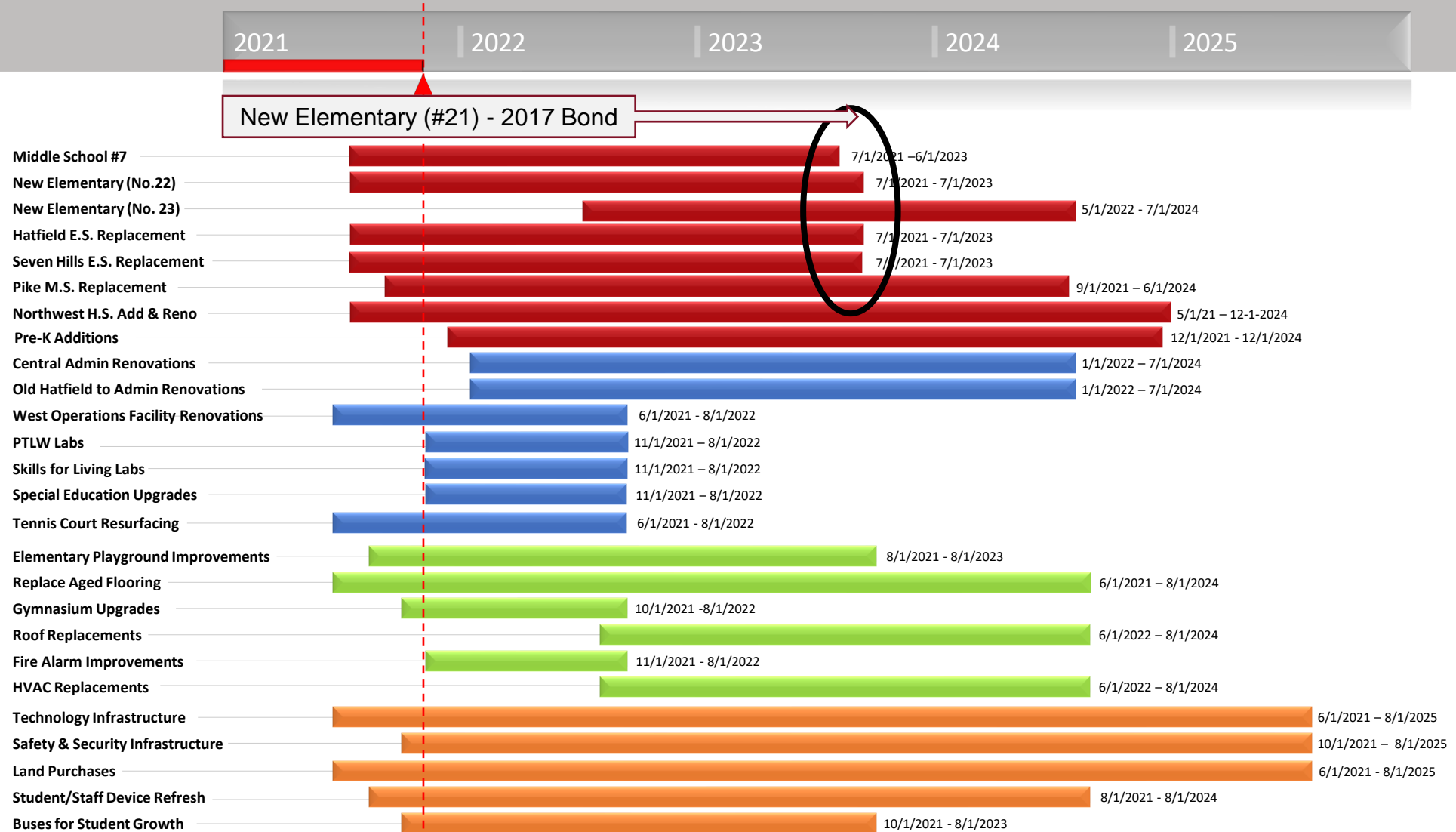


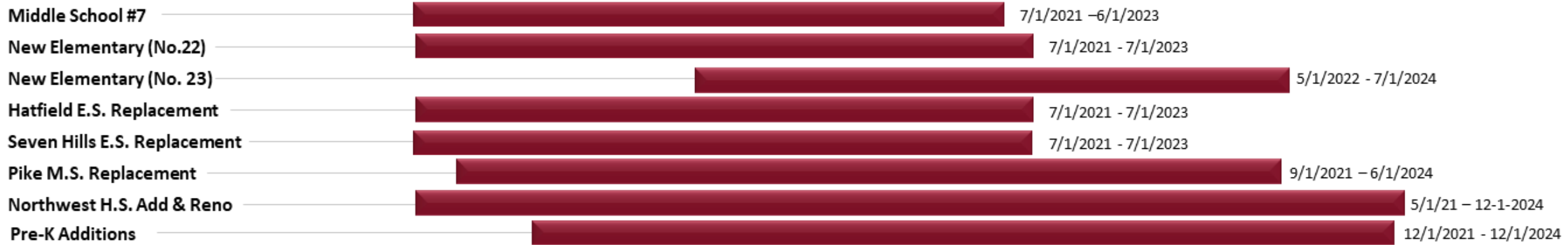
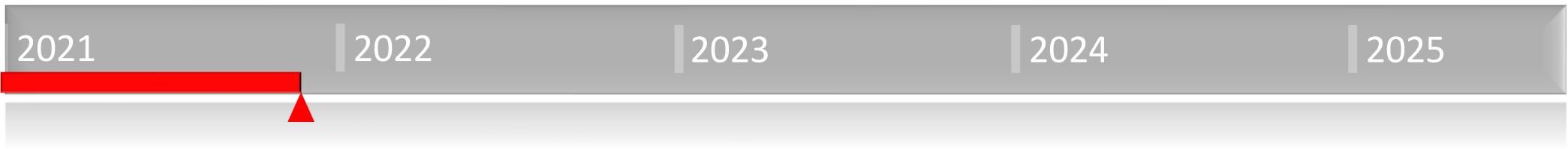
**Technology Devices:
\$19,400,000**

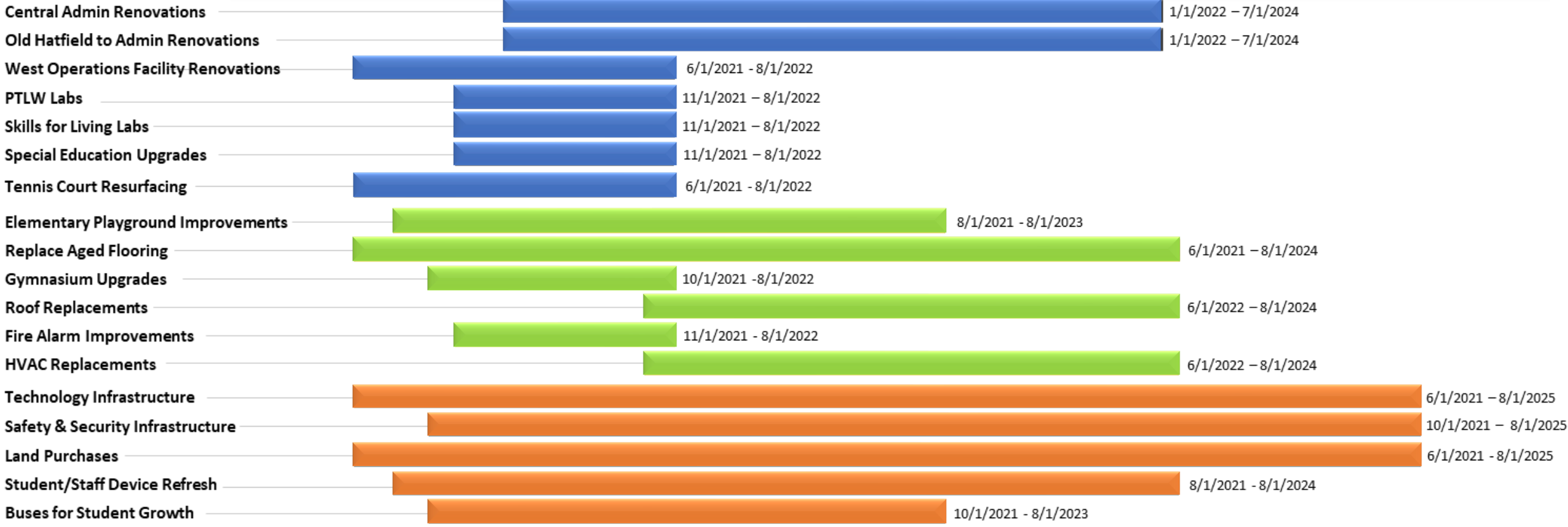
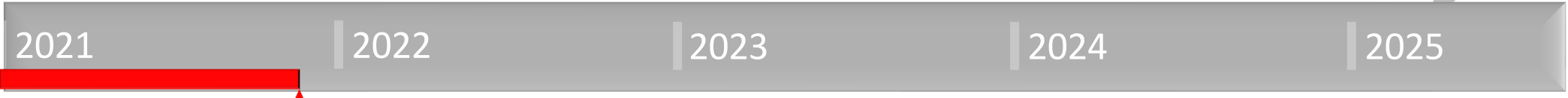
- New Devices for Students and Teachers (Lifecycle Replacements and Enrollment Growth)

Any bonds issued for technology devices will not exceed three years.

Anticipated Schedule









Northwest ISD Construction Update

V.R. Eaton HS Addition



V.R. Eaton HS Addition















Medlin MS – Fine Arts Addition



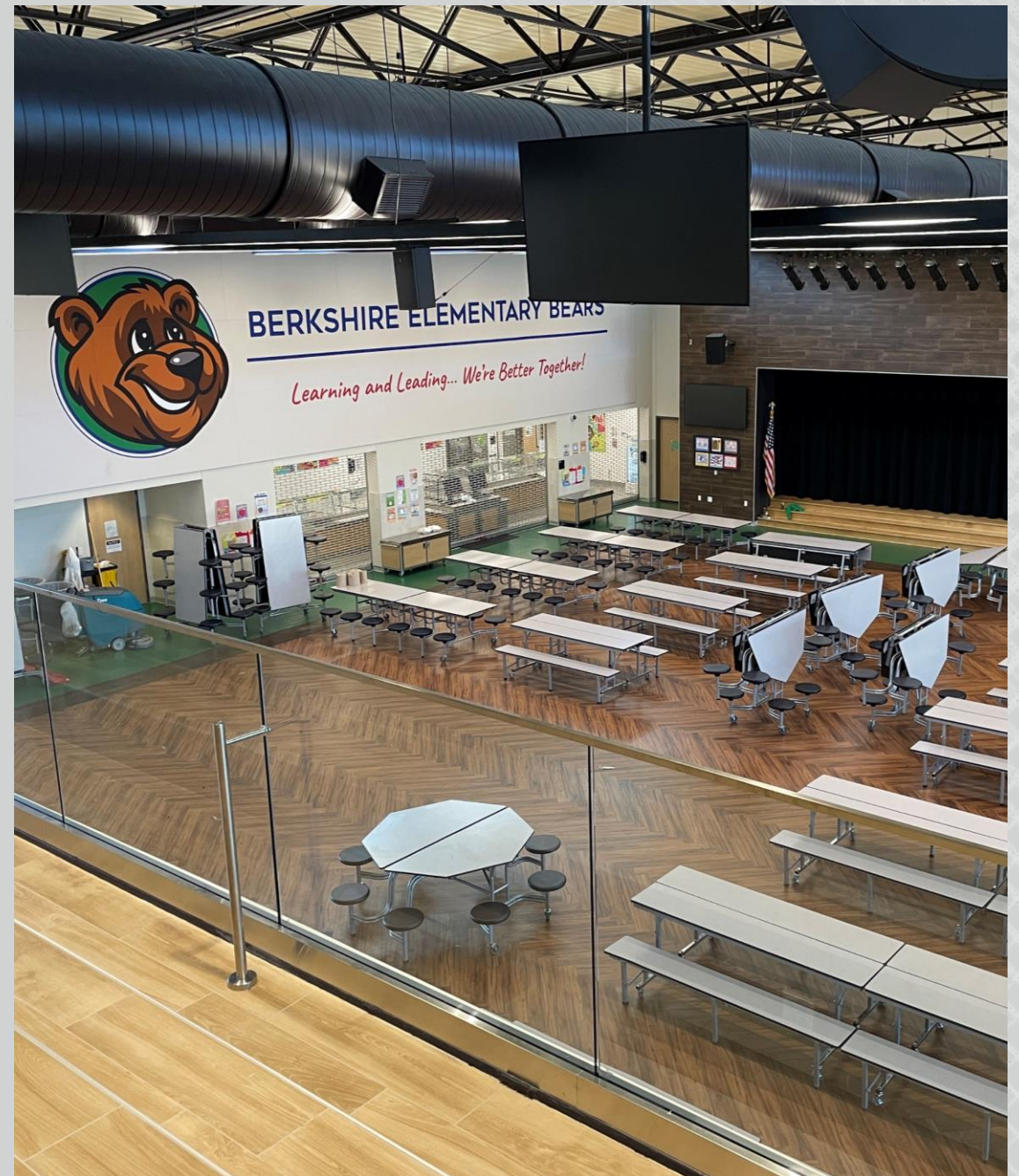






Berkshire Elementary











BERKSHIRE ELEMENTARY BEARS



Learning and Leading... We're Better Together!



2

HABITATS

Different types of bears also live in different habitats. Brown bears and American black bears live in mountain forests, meadows, or near rivers. The giant panda lives in forests that are thick with bamboo. The polar bear, though, lives in a place with very little plant life. Polar bears spend their lives on large sheets of ice!



3

FOOD & DIET

Most bears are omnivores. They eat mostly plants, such as leaves, roots, nuts, berries, fruit, and twigs. However, they also eat insects, fish, and other small animals. Some bears have long tongues that they use to get honey out of beehives. Polar bears are mostly carnivores.



4

TIME TO SLEEP

Bears that live in warmer places can stay active all year. However, most bears enter a hibernation state during the cold winter months. This is called hibernation. When a bear is ready to hibernate, it will find a cave or hollow log in which to lie down. During that time, a bear's heart rate slows to just a few beats a minute and it does not eat or drink. During its long sleep, it uses its fat stores for energy. In the fall, a bear eats extra food to store up its body. Spring is winter hibernation. The bear wakes up in the fall and it stays with its mother in a den.

5

BIG AND BIGGER

Brown and black bears spend most of their lives in the wild. They live in the mountains, forests, and meadows. They are very strong and can climb trees. They are also very curious and will investigate anything that is new to them. They are also very intelligent and can learn to solve problems. They are also very social and will live in groups. They are also very hardy and can survive in harsh environments. They are also very resilient and can recover from injuries. They are also very adaptable and can live in a wide range of habitats. They are also very curious and will investigate anything that is new to them. They are also very intelligent and can learn to solve problems. They are also very social and will live in groups. They are also very hardy and can survive in harsh environments. They are also very resilient and can recover from injuries. They are also very adaptable and can live in a wide range of habitats.

LIFE CYCLE OF A BEAR

When they are born, they are small, blind, and hairless. Cubs start to walk soon as they are born. By the spring, they will weigh 10 to 20 pounds. They live with their mothers until they are two to three years old. They eat about 100 pounds of food a day during the fall!



Network Operation Centers





BUILDING 2

GENERAC INDUSTRIAL POWER

Handicapped parking sign



NISD Aquatic Center

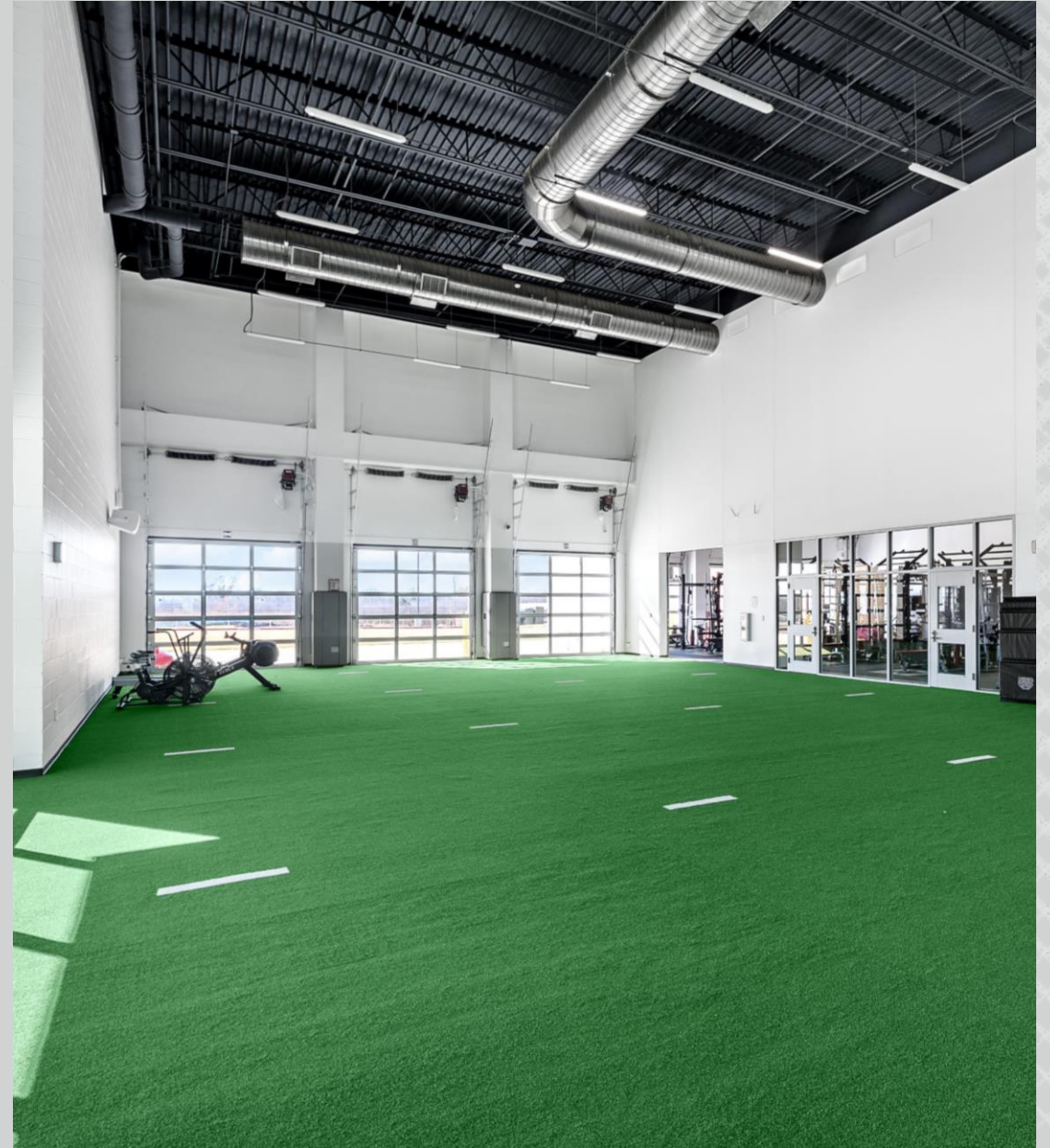












Renovations to former Haslet ES – Phase 1









Legacy Learning Center – Phase 2





PREVIOUS

CURRENT





TEAMWORK
PRIDE
EXCELLENCE



TEAMWORK
PRIDE
EXCELLENCE





PREVIOUS

CURRENT







PREVIOUS

CURRENT





PREVIOUS

CURRENT





Middle School #7



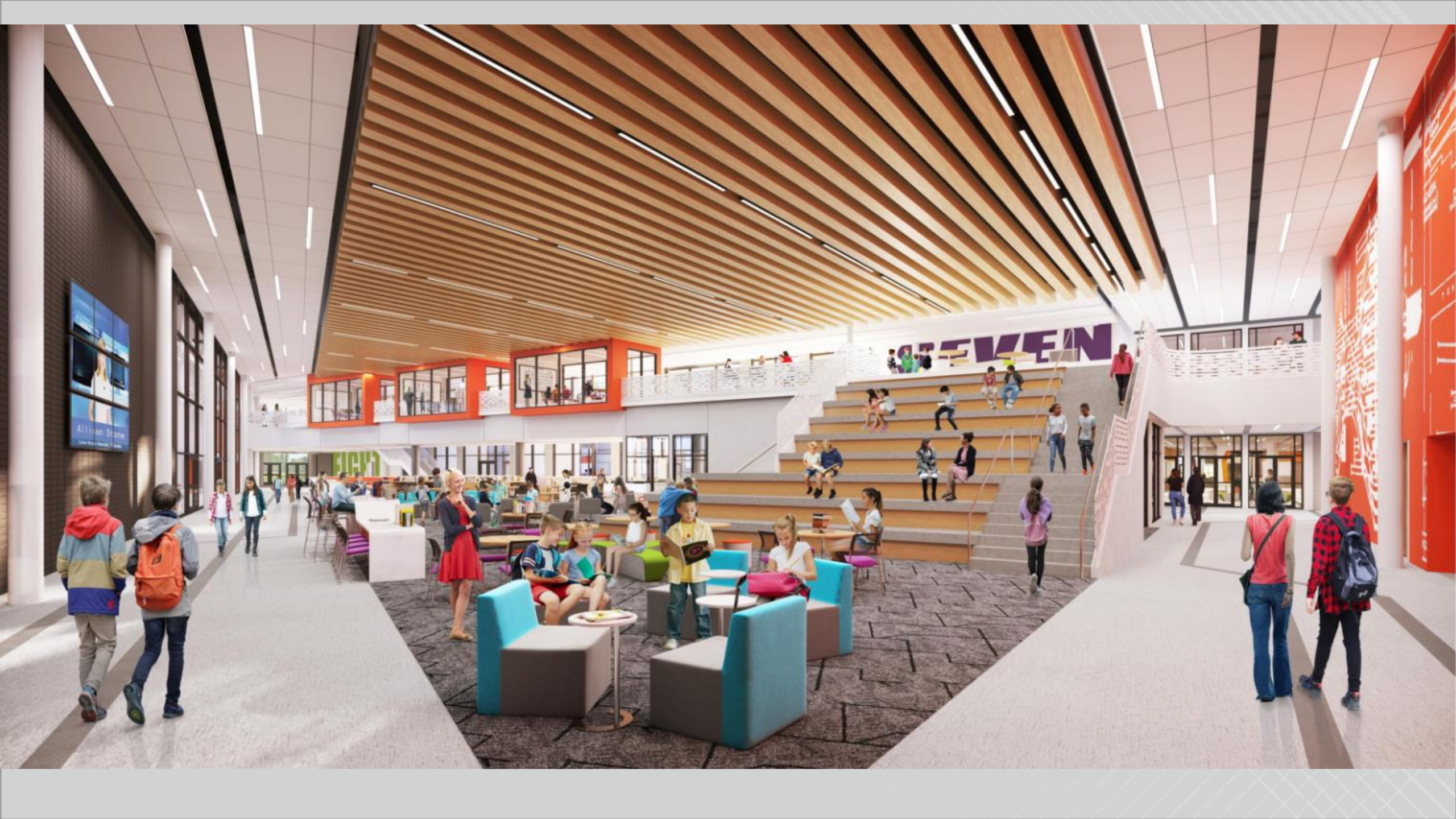




MIDDLE SCHOOL 7

NISD MIDDLE SCHOOL









George Curry
Managing Director

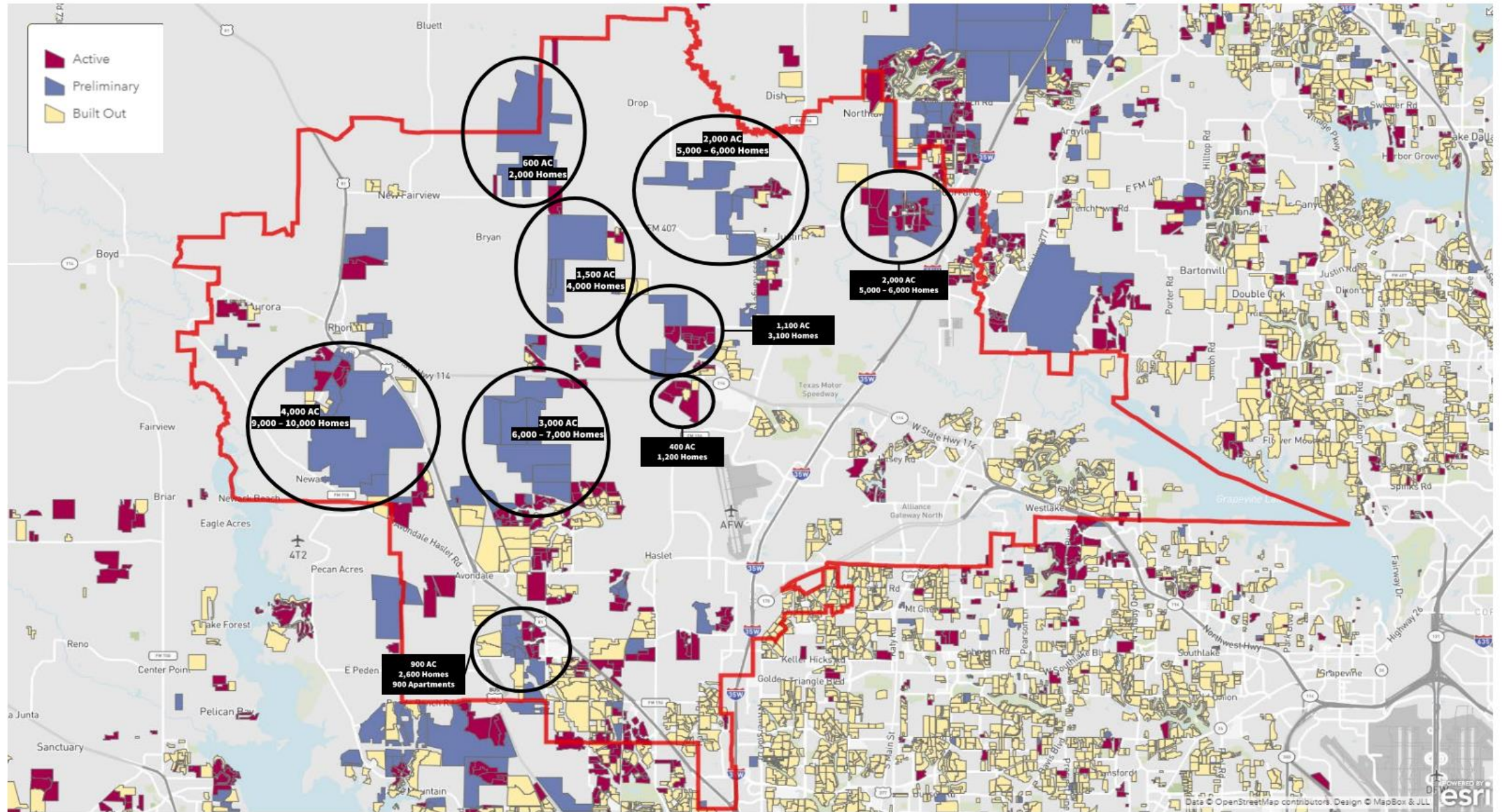


Northwest ISD Residential Pipeline

Dallas-Fort Worth, TX | 2021

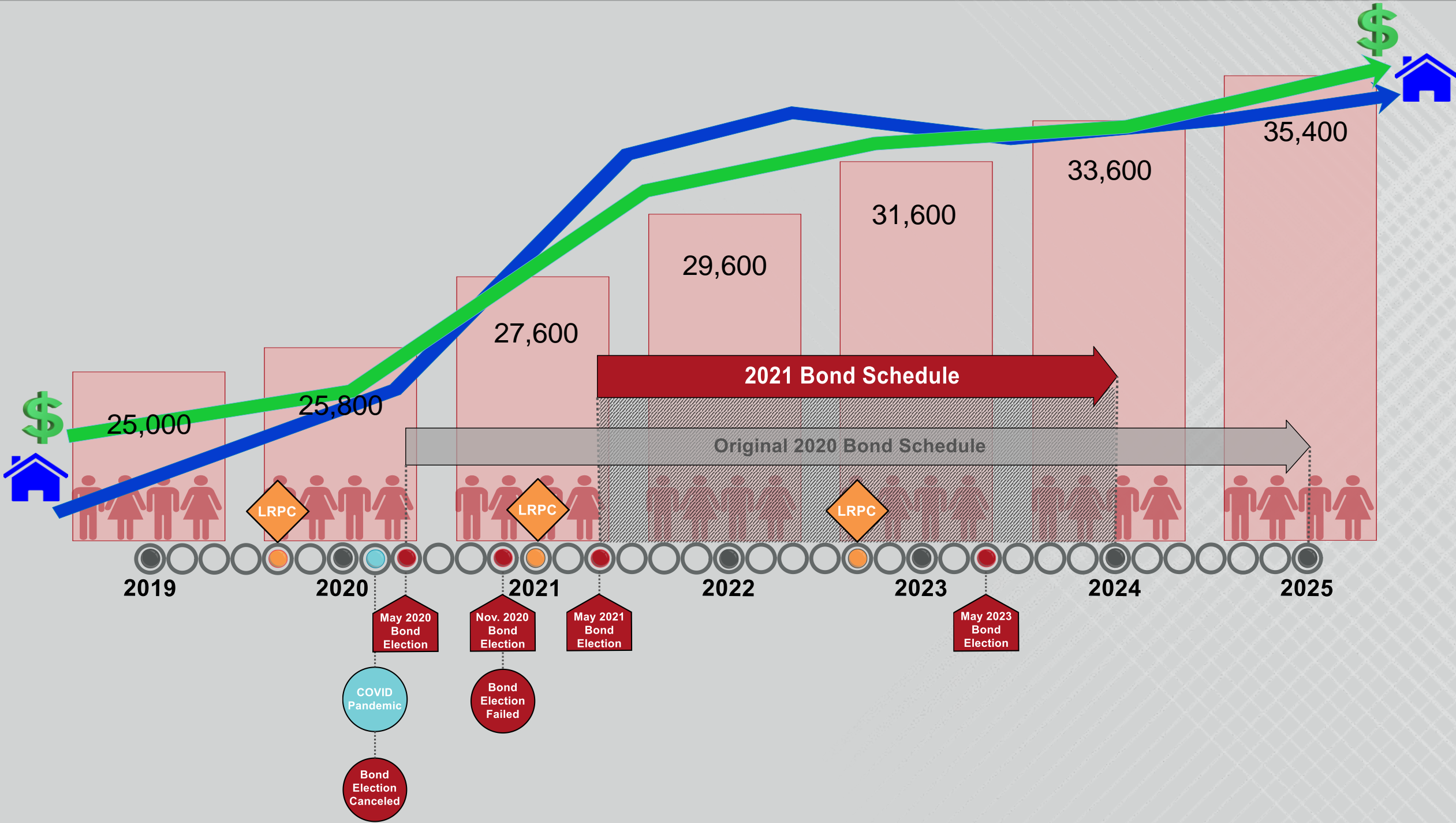


11/16/2021



Northwest ISD Long Range Planning Committee





Northwest ISD Construction Website

Visit

[NISDtxconstruction.org](https://www.nisdtxconstruction.org)

for updated information on active and
planned projects.

Remember

[NISDtxlrpc.org](https://www.nisdtxlrpc.org)



Active Projects Projects in Planning Completed Projects Background + Resources

WELCOME TO THE

Northwest ISD Construction Website

MAY 2017 Vickers Agipville Band Stadium	DECEMBER 2018 Ag Barn Complete	OCTOBER 2019 NHS Field House Complete	MAY 2020 NHS PNC Renovations Complete	SEPTEMBER 2020 Fine Arts Addition Complete of CTMS, TMS, WMS	AUGUST 2021 Berkshire Elementary Complete Madison Addition Complete
AUGUST 2018 Adams MS Complete Lizlie Curfs ES Complete Renovations Complete at Hughes ES, Hatfield ES, Prairie View ES	AUGUST 2019 Lanica Thompson ES Complete Renovations Complete at Berkshire Ranch ES and J.C. Thompson ES NHS CTE Renovations Complete	JANUARY 2020 NHS Field House Complete	AUGUST 2020 Hosler ES Replacement Complete NHS Addition Complete	JANUARY 2021 Aquatic Center Complete Eaton HS Addition Complete	

MIDDLE SCHOOL #7

