



WELCOME

Long Range Planning Committee
Winter Update 2023





The diagram illustrates the calculation of the total construction cost by adding the current construction cost to the escalation cost over time.

Component	Value / Description
Construction Cost	2 (Dollars of construction cost to pay a unit of work today (materials, etc.))
Escalation	2022 - 2024 (Dollars of construction inflation that occur from today's cost until project construction)
Total Construction Cost	2024 (Estimate of projected contractable bids)



BOND 2023

FRAMEWORK FOR THE FUTURE

NORTH HAVEN IS THE FASTEST-GROWING SCHOOL DISTRICT IN DFW.

THANK YOU, NISD
VOTERS!

Prop A - 60.6% Approval

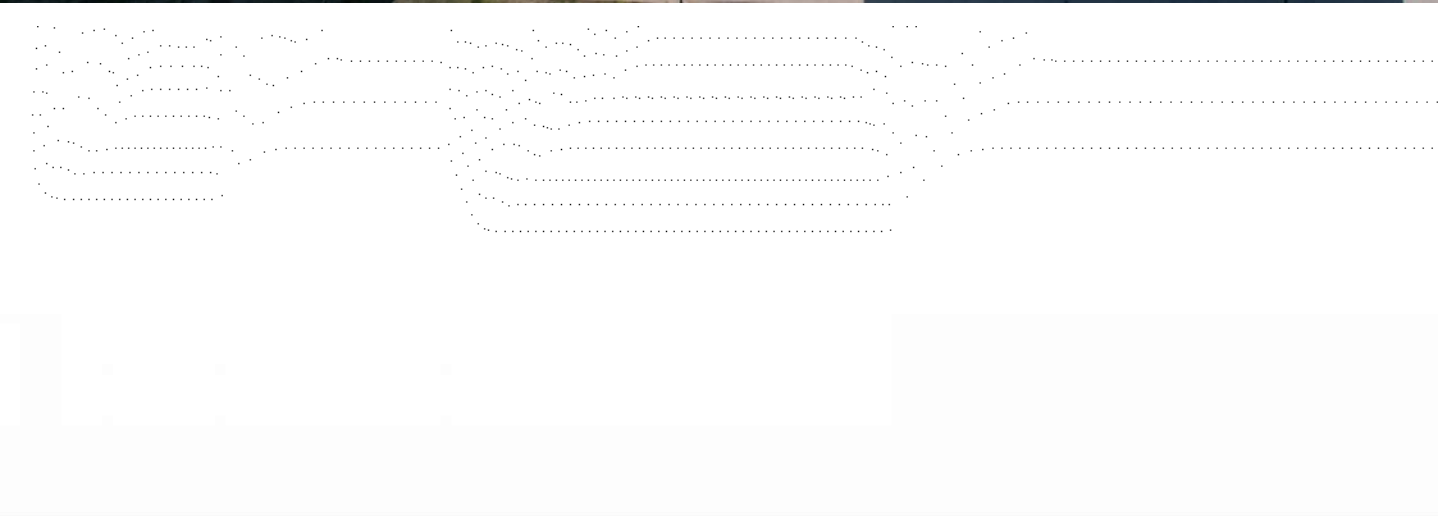
Prop B - 50.4% Approval

Prop C - 61.7% Approval

C.W. Worthington Middle School #7

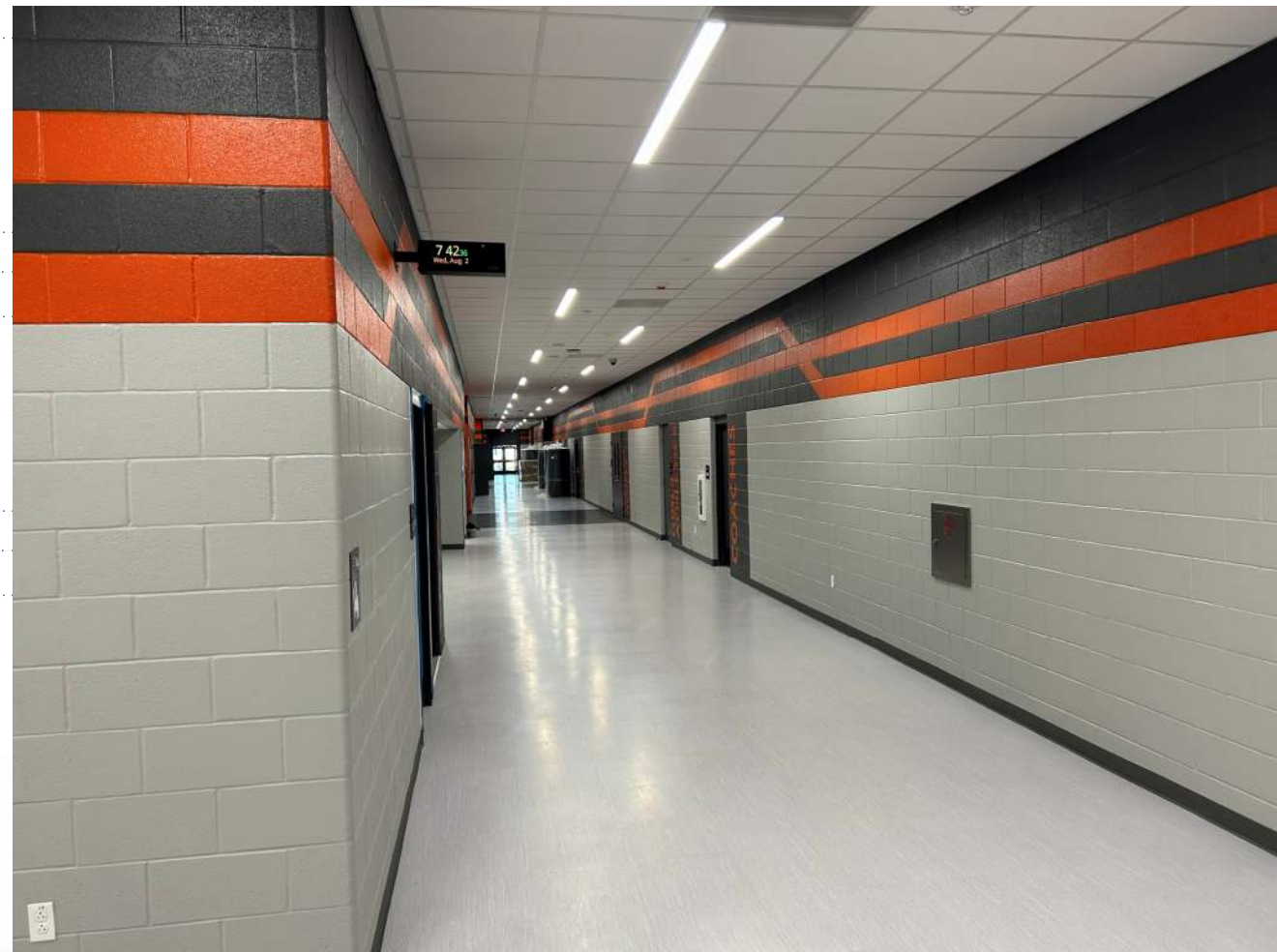














Carter Elementary School #21





Daniel Elementary School #22





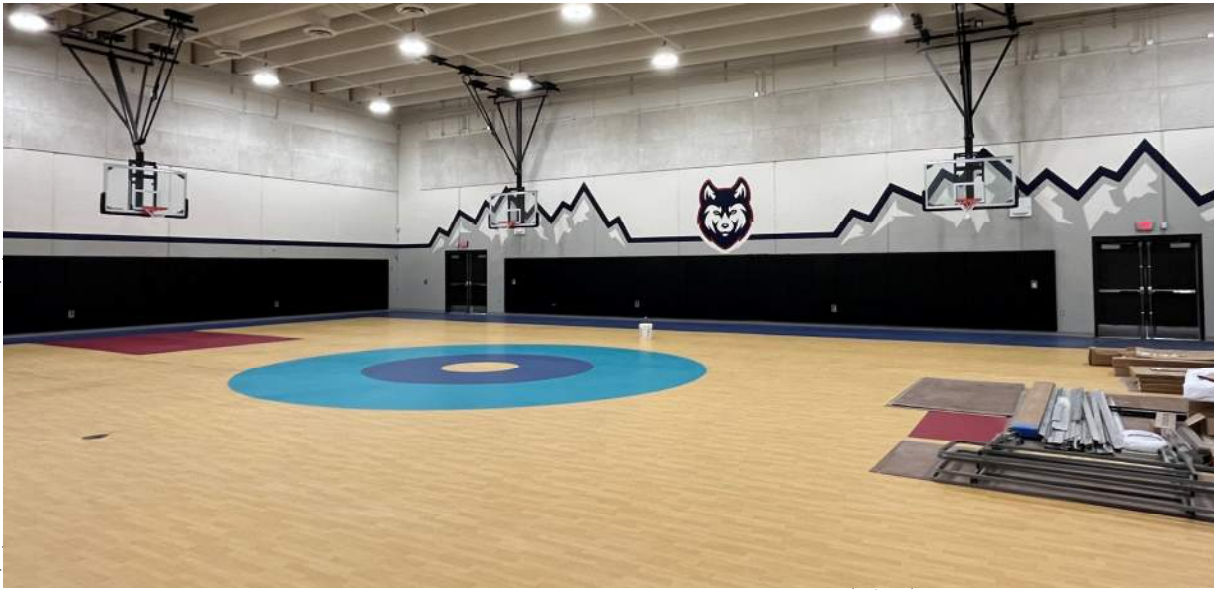
Hatfield Replacement ES





Seven Hills Replacement ES





Pre-K Additions



Love ES



JC Thompson ES





Sendera Ranch ES

Hughes ES





Granger ES

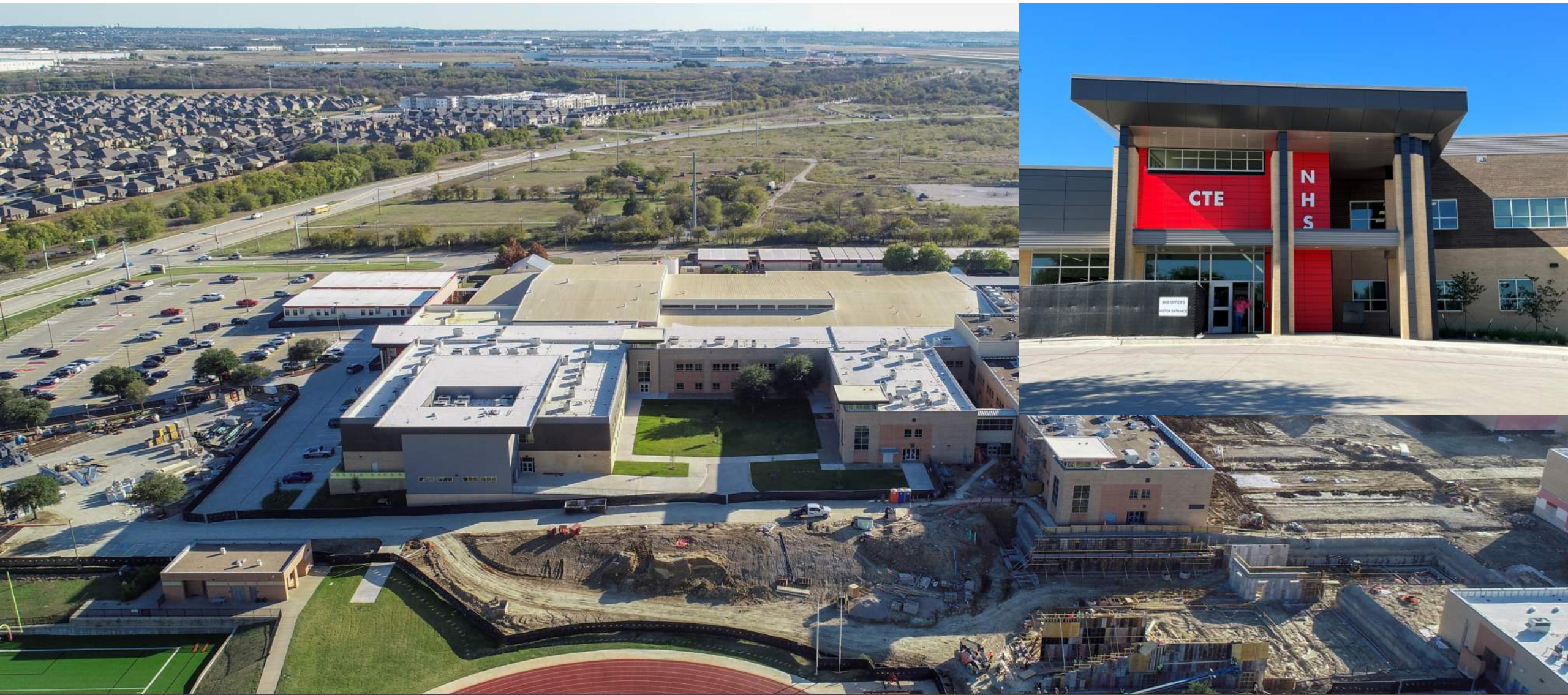
Peterson ES



Schluter ES



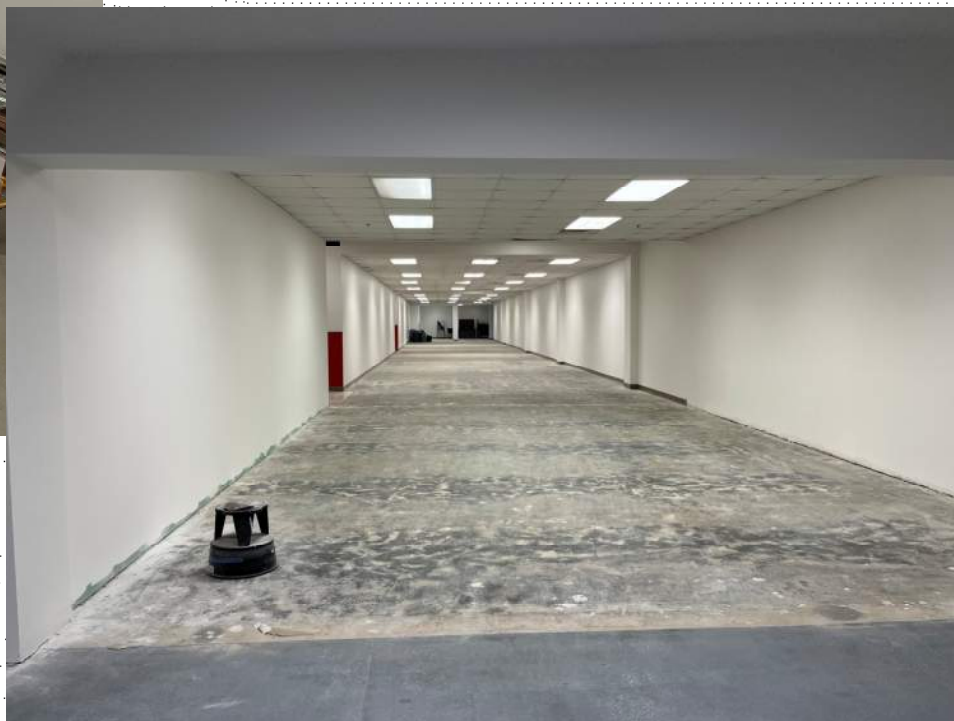
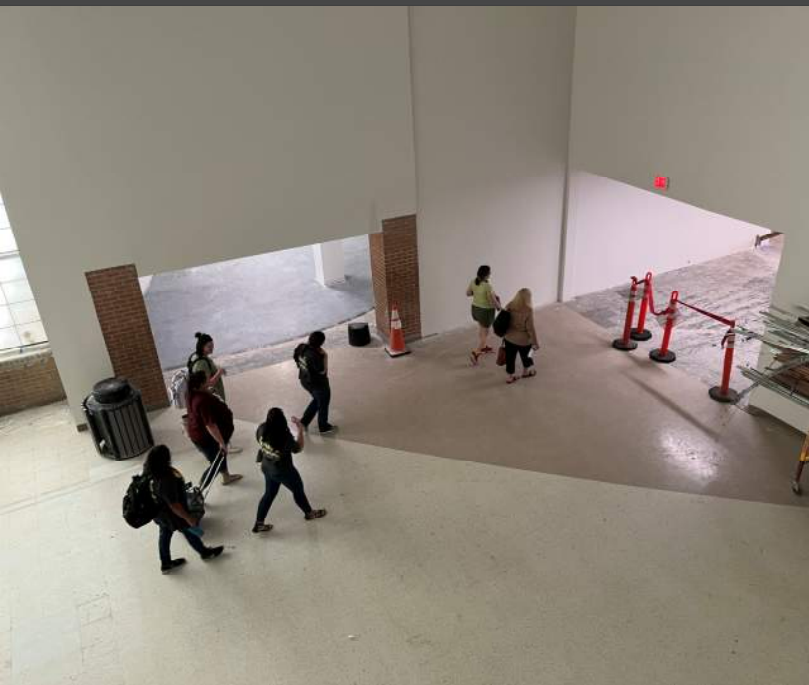
Northwest HS – Renovations & Additions















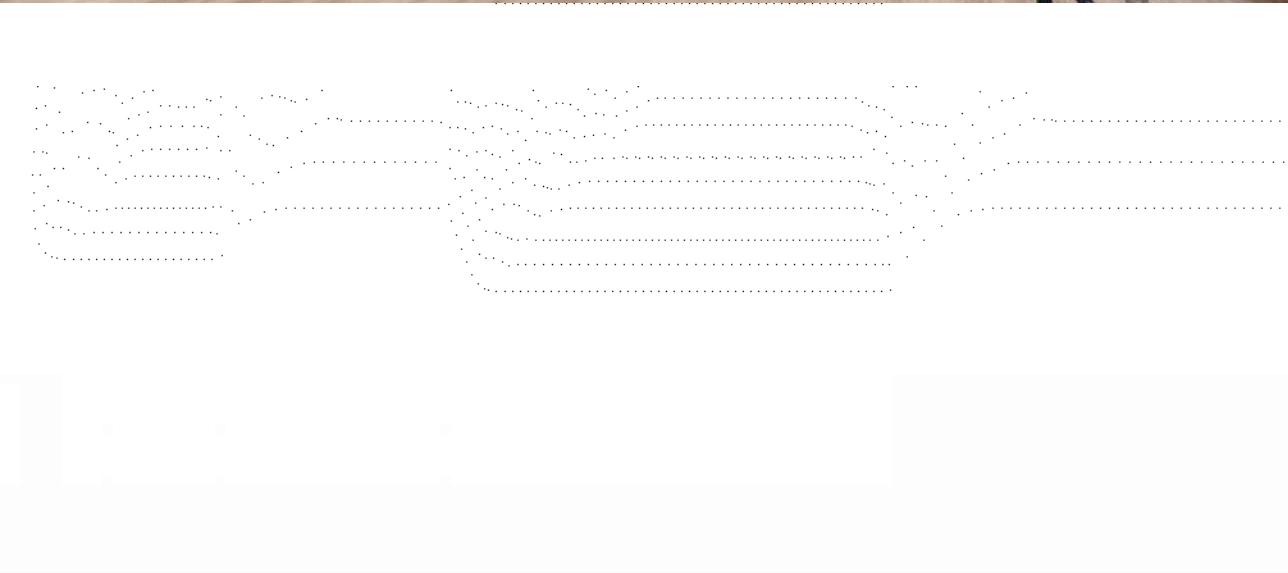


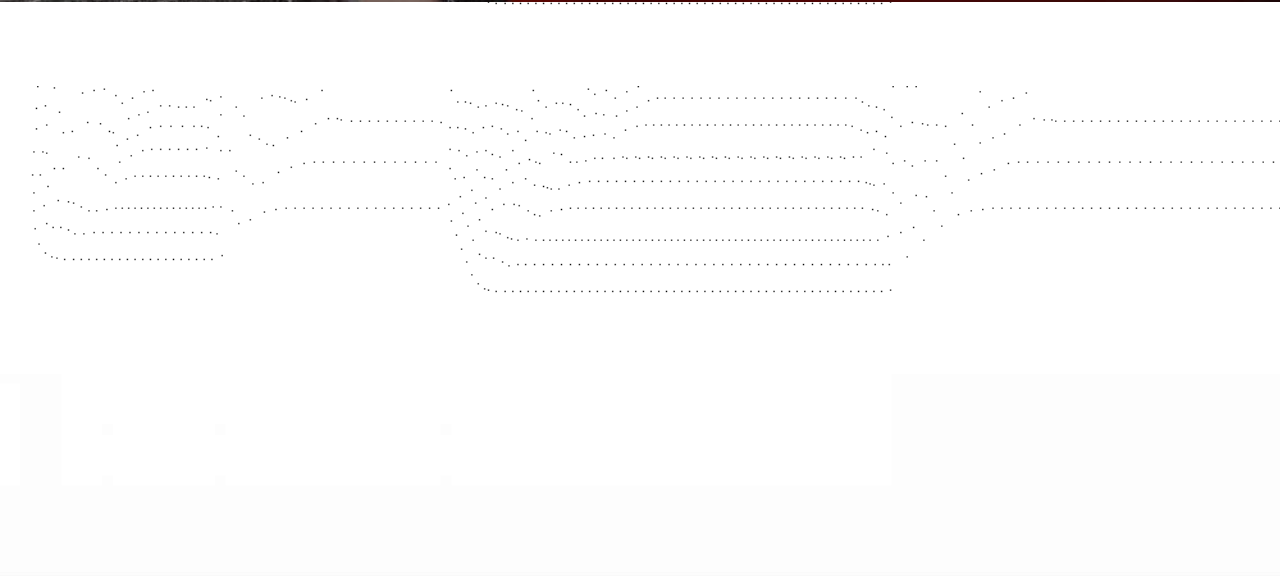
Pike Replacement Middle School









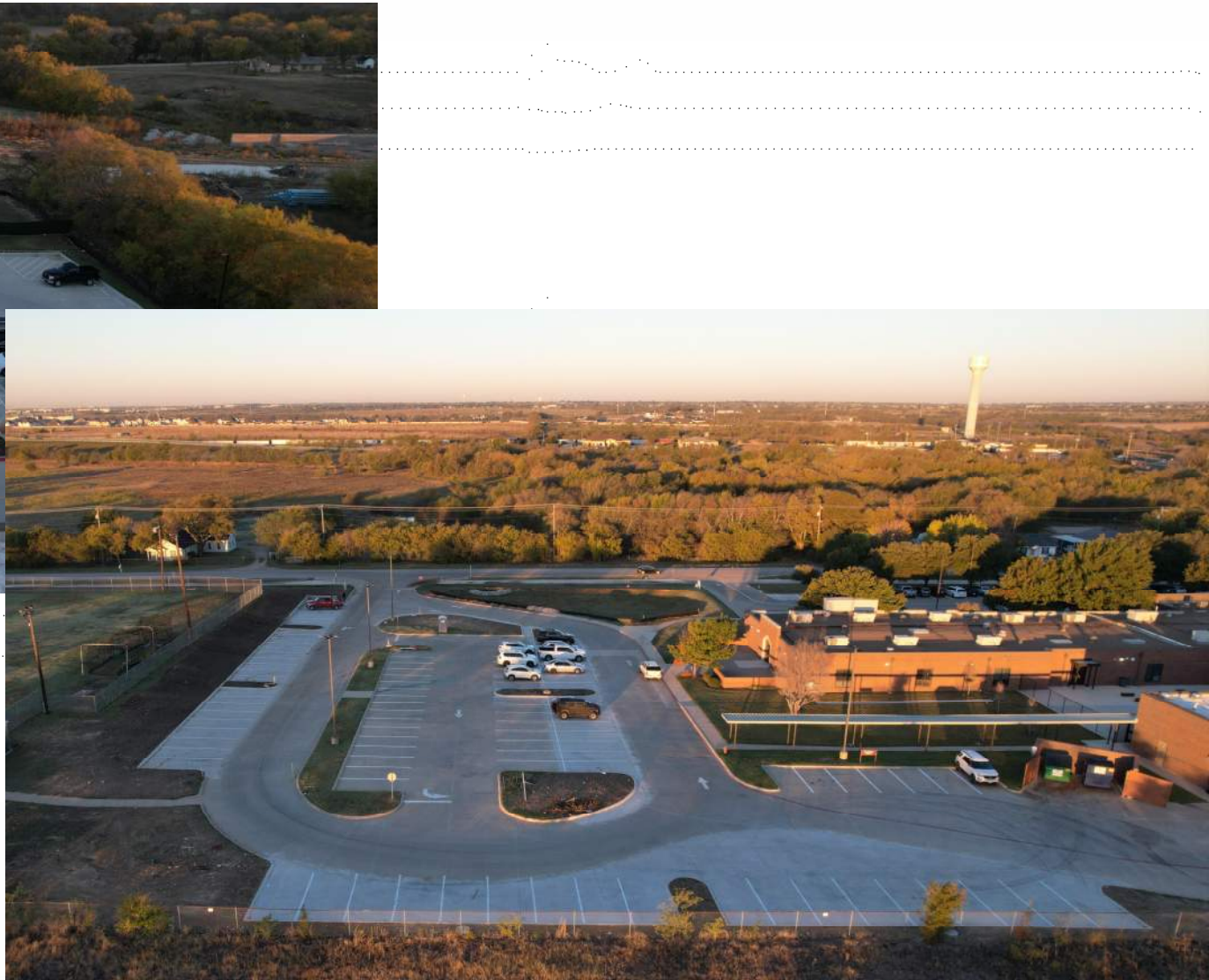
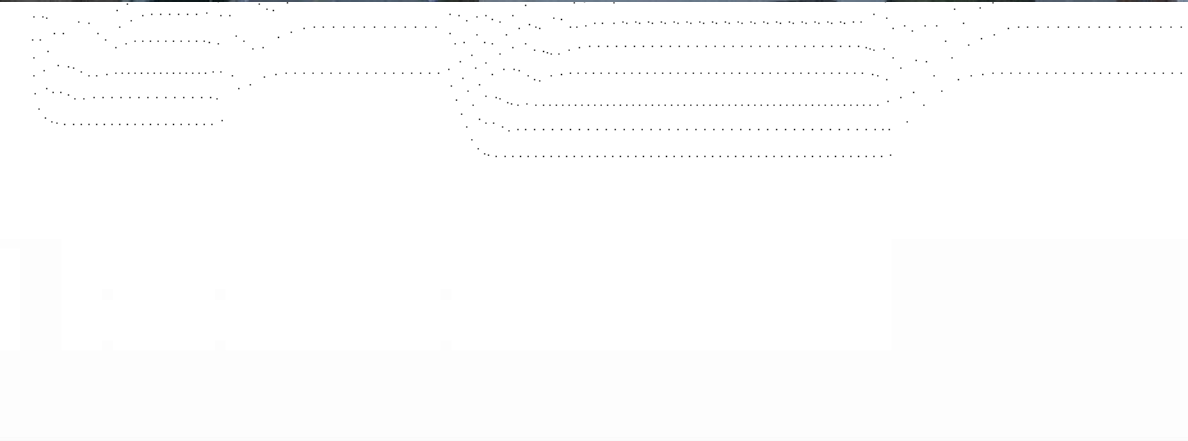


Perrin Elementary School #23





Legacy Learning Center – Parking Lot Expansion



Former Hatfield ES Renovation to Temp Administration Building



Former Hatfield ES Renovation to Temp Administration Building



Former Hatfield ES Renovation to Temp Administration Building





NISD Distribution Center – HVAC Renovation



WELCOME TO THE

Northwest ISD Construction Website

CW WORTHINGTON MIDDLE SCHOOL #7

NISD MIDDLE SCHOOL #7 LOCATED IN THE LETARA SUBDIVISION

ESTIMATED COMPLETION JULY 2023

