





NORTHWEST ISD
**LONG RANGE
PLANNING**
COMMITTEE

Meeting #1
September 6, 2022



Welcome!

- Introductions & Icebreaker
- Committee Overview
- Tour Legacy Learning Center
- Safety and Security
- Small Group Discussion
- Closing

Icebreaker



Icebreaker: Stand Up

- If no one in your household is currently enrolled in NISD.
- If you attended an NISD school as a student.
- If someone in your household attended an NISD school the first year it was opened.
- If you own or work for a business within the NISD boundaries.
- If you moved here from another state.
- If you are employed by the district.
- If someone in your household is employed by the district.

Icebreaker: Stand Up

- If someone in your household is an NISD athlete.
- If someone in your household is in NISD Fine Arts.
- If you have had some engagement with our CTE programs.
- If you have ever read comments on social media about traffic in our district.
- Now everyone stand up - if this is your first LRPC please be seated, your second please be seated, if this is your third.....etc.....
- Where were you on the night of August 15, 2000? (first time the LRPC met)

Welcome



Dr. David Hicks



Board of Trustees



Ann Simpson, Ph.D.
President



Steve Sprowls
Vice President



Lillian Rauch, Ph.D.
Secretary



Judy Copp



DeAnne Hatfield



Jennifer Murphy



Mark Schluter

Vision & Mission

Our Vision

Northwest ISD empowers learners and leaders to positively impact the world.



Our Mission

Northwest ISD, in collaboration with students, families, communities, and global partners, will engage in a culture of learning that prepares all students to confidently navigate their future.



Beliefs

1. Kids come first.
2. Continuous learning is essential to prepare for college and career opportunities.
3. Each student's success is the shared responsibility of students, families, schools, and communities.
4. Learning is influenced by environment.



Strategic Goals

Goal 1

Students will achieve success through meaningful learning experiences, innovative pathways, and personalized opportunities.

Goal 2

Northwest ISD will recruit, value, and retain an exceptional staff to create a rewarding learning environment.

Goal 3

Northwest ISD will create and foster an environment where all stakeholders are engaged in the transformational work of the NISD family.



Committee Charge

- Consider the educational needs of all students and align with the district's mission, vision and goals
- Represent the entire NISD community, its values and perceptions during the planning process
- Assess and prioritize the district's current and long-term facility needs, including, but not limited to:
 - District Growth and Capacity
 - Building Conditions and Infrastructure
 - Safety and Security
 - Evolving Educational Delivery and Programs
- Form a recommendation for consideration by the NISD Board of Trustees

Committee Overview

Bond History | Managing Growth | Moving Forward



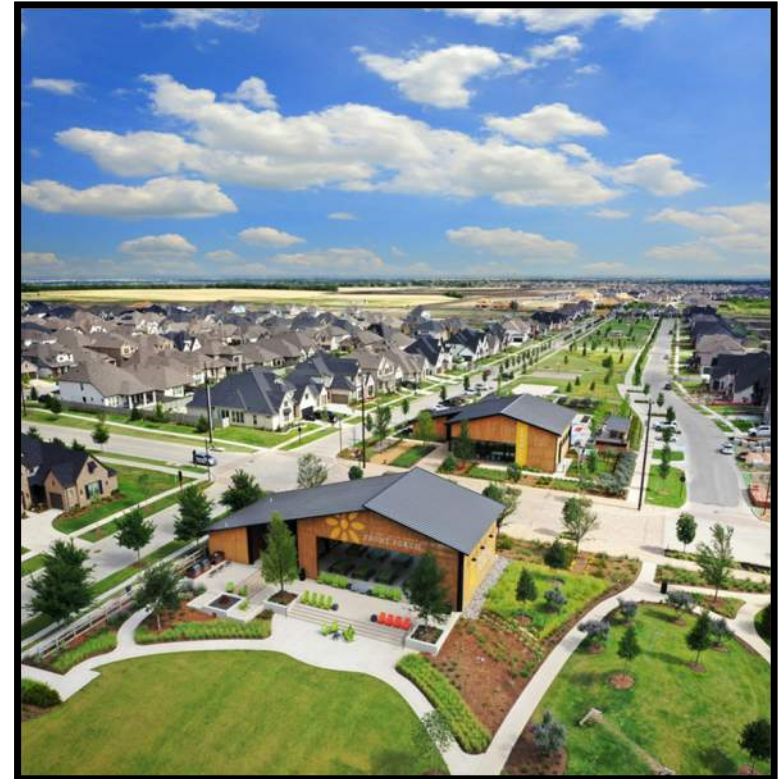
Committee Overview

- You are Northwest ISD!
- Comprised of parents, staff, community members, and business leaders
- Represent a diverse cross-section of our district
- Bring varying perspectives from our communities
- Invited through nominations from Board Members and District & Campus Administration



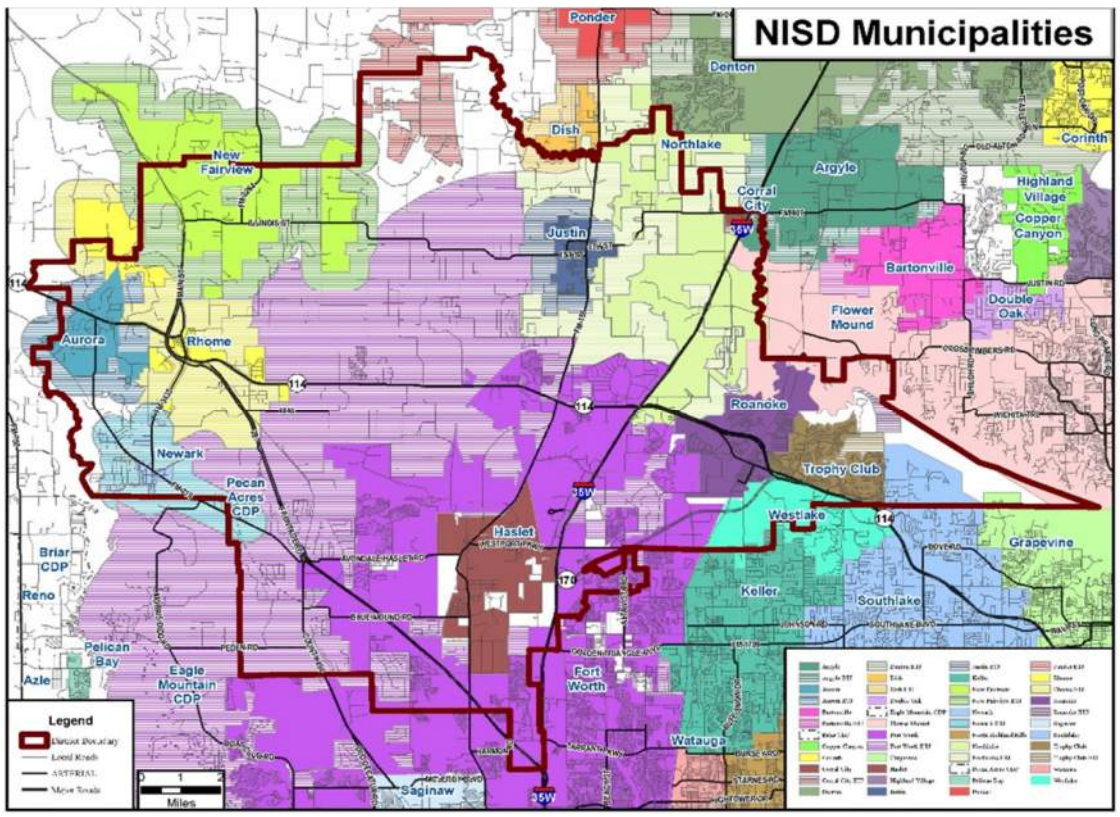
About Our Community

- Close to 30,000 students across 31 campuses in the northwest corridor of the DFW metroplex.
- The geographical area extends into three counties: Denton, Tarrant and Wise.
- Encompassing 234 square miles the district serves all or part of 14 cities, towns and communities.
- That is ½ the size of the city of Los Angeles.
- Six Disney World theme parks would fit inside the boundaries of the district.

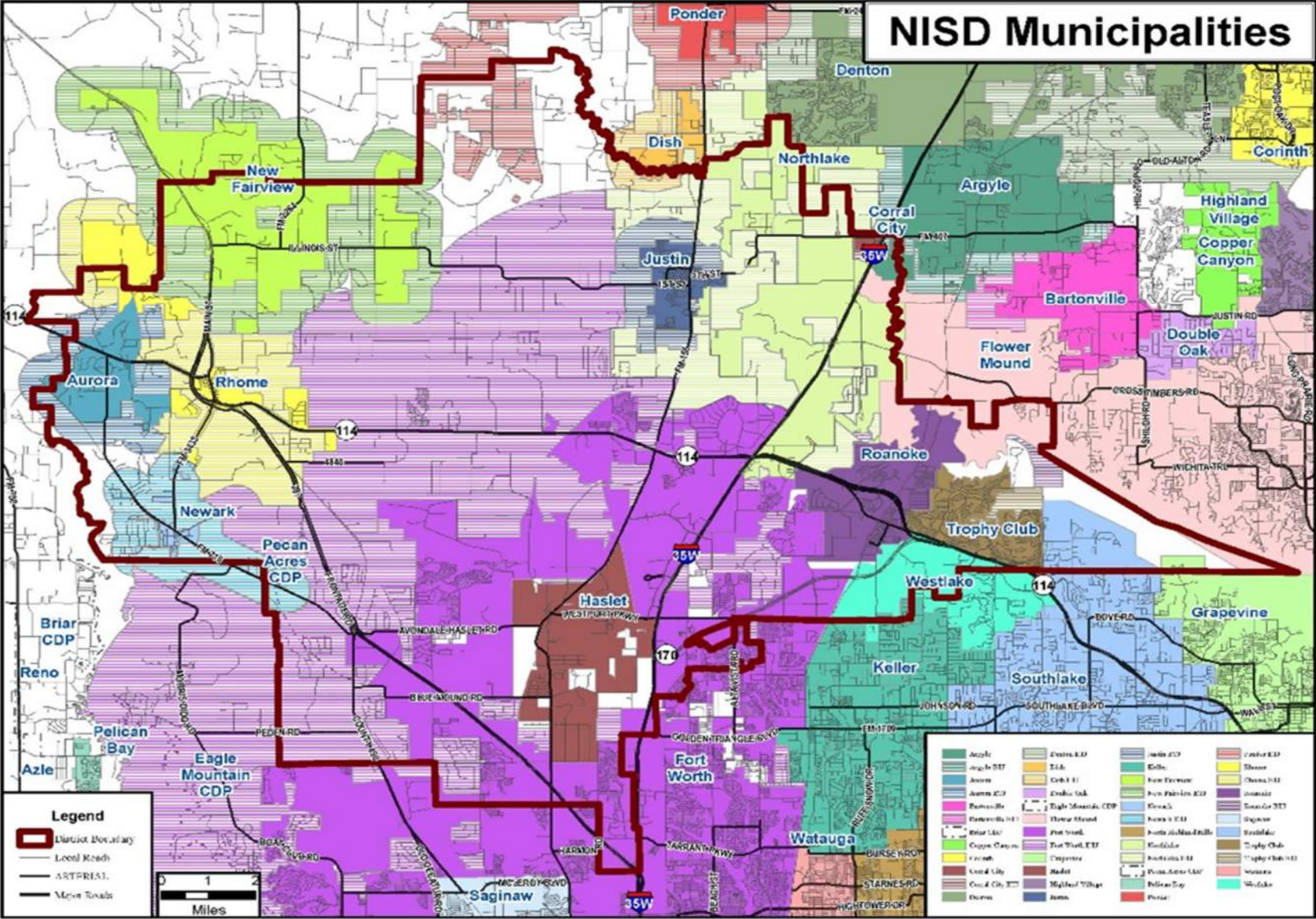


About Our Community

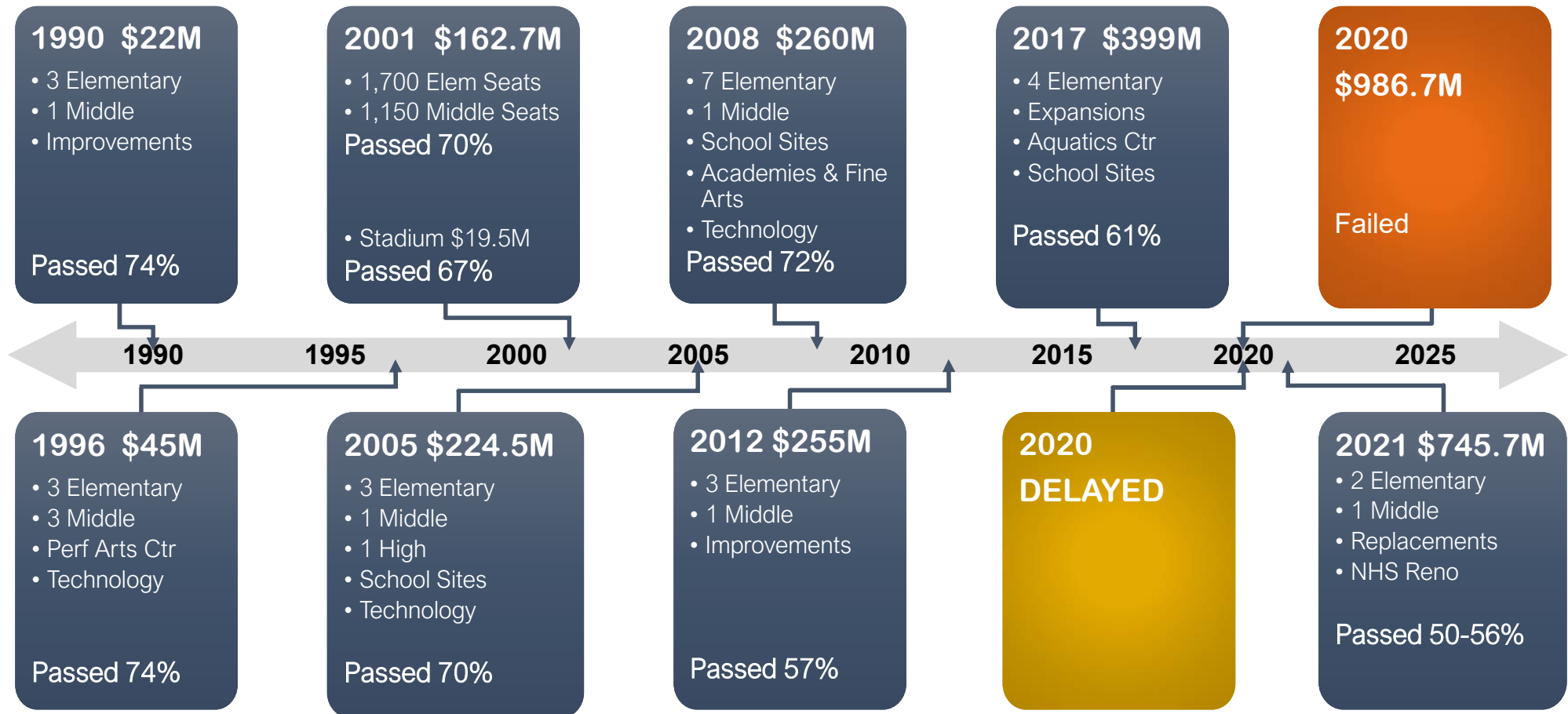
- 1. Aurora
- 2. Flower Mound
- 3. Fort Worth
- 4. Haslet
- 5. Justin
- 6. Keller
- 7. Newark
- 8. New Fairview
- 9. Northlake
- 10. Rhome
- 11. Roanoke
- 12. Southlake
- 13. Trophy Club
- 14. Westlake



NISD Municipalities



Bond History



Current and Future NISD Schools

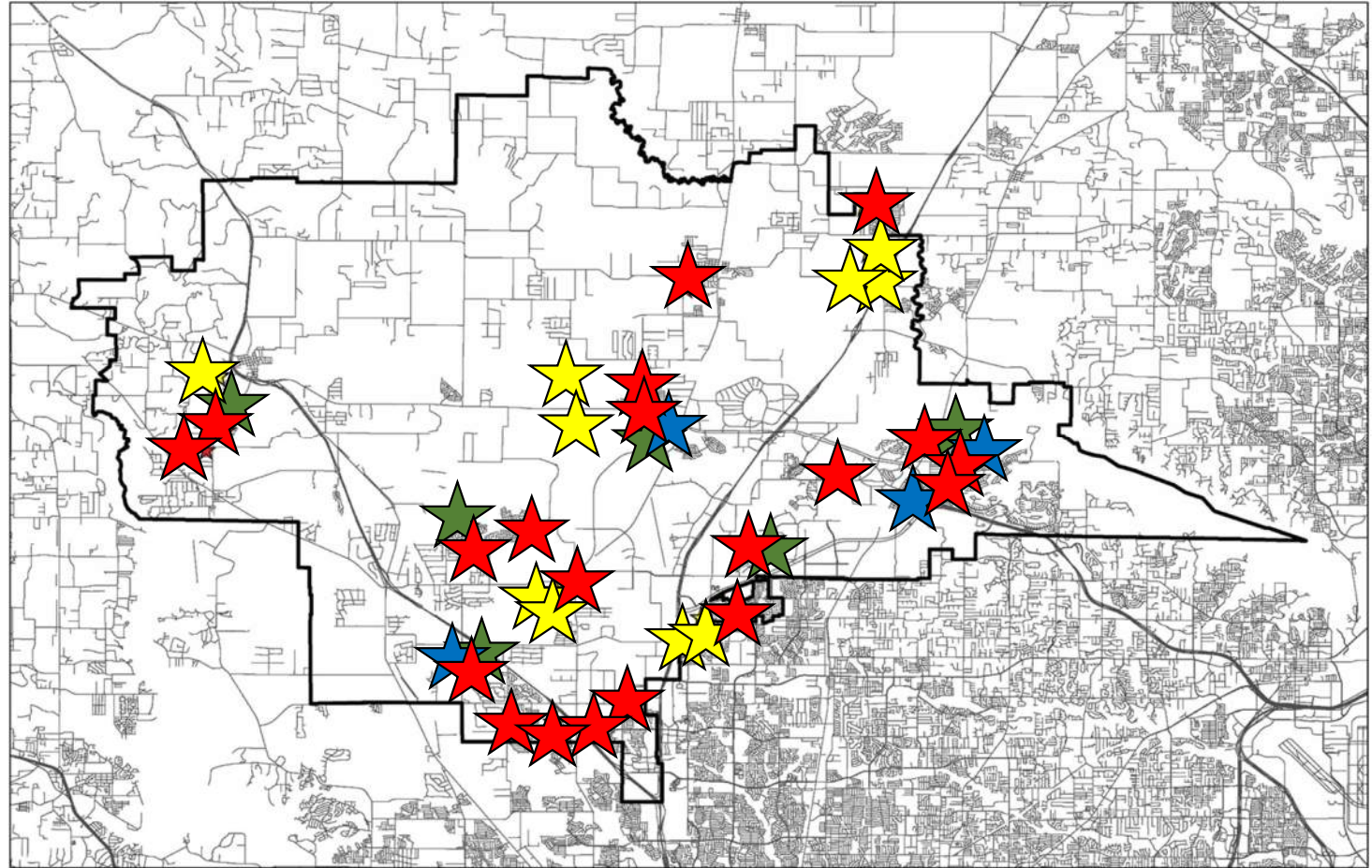
Current Schools

- ★ 20 Elementary Schools
- ★ 6 Middle Schools
- ★ 4 High Schools

Future Schools

- ★ 3 Elementary Sites
- ★ 3 Middle School Sites
- ★ 4 High School Sites

40 Total School Sites



Student Enrollment



September 6th

29,144

2012: 14,164

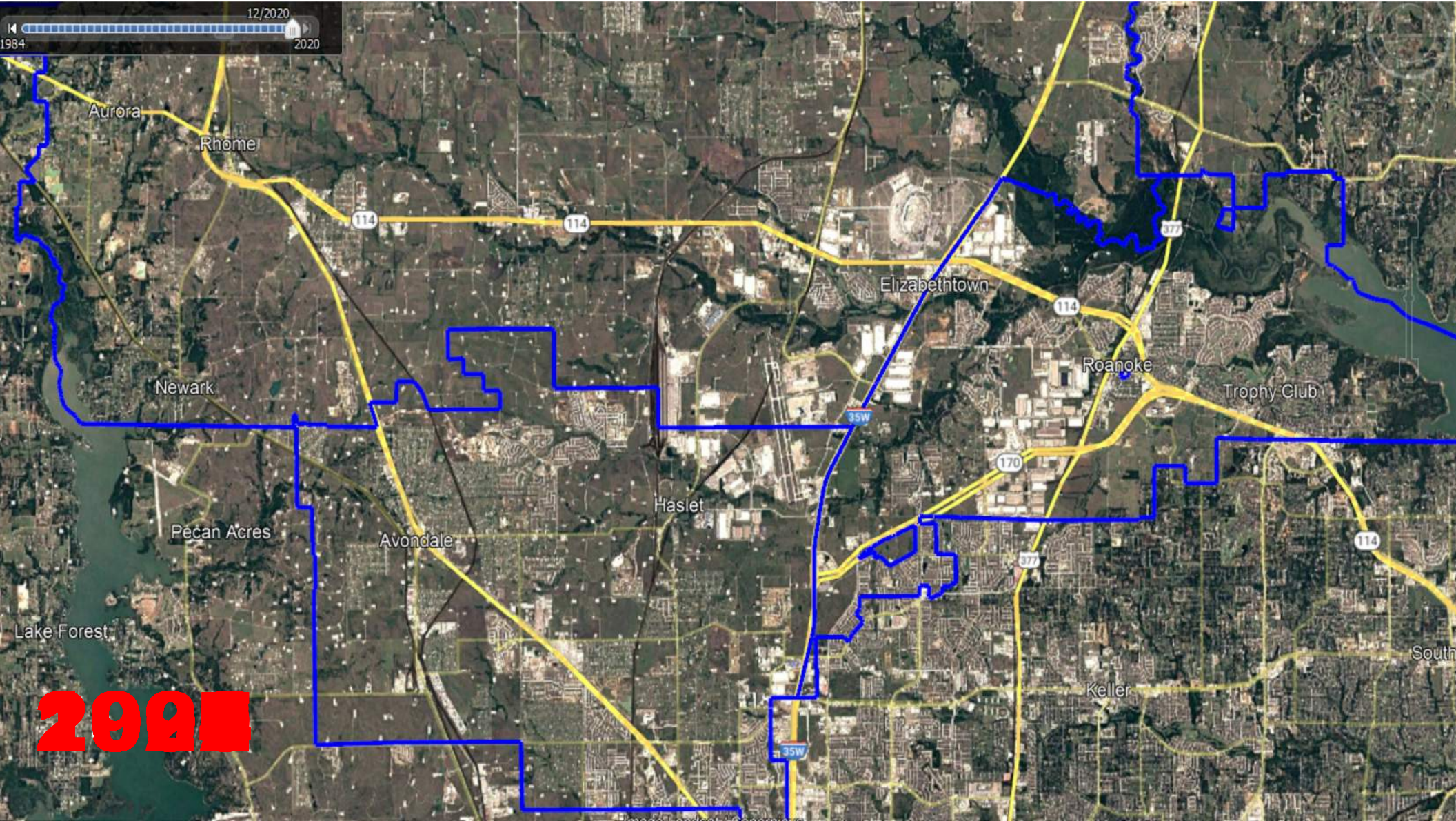


2022: 27,612

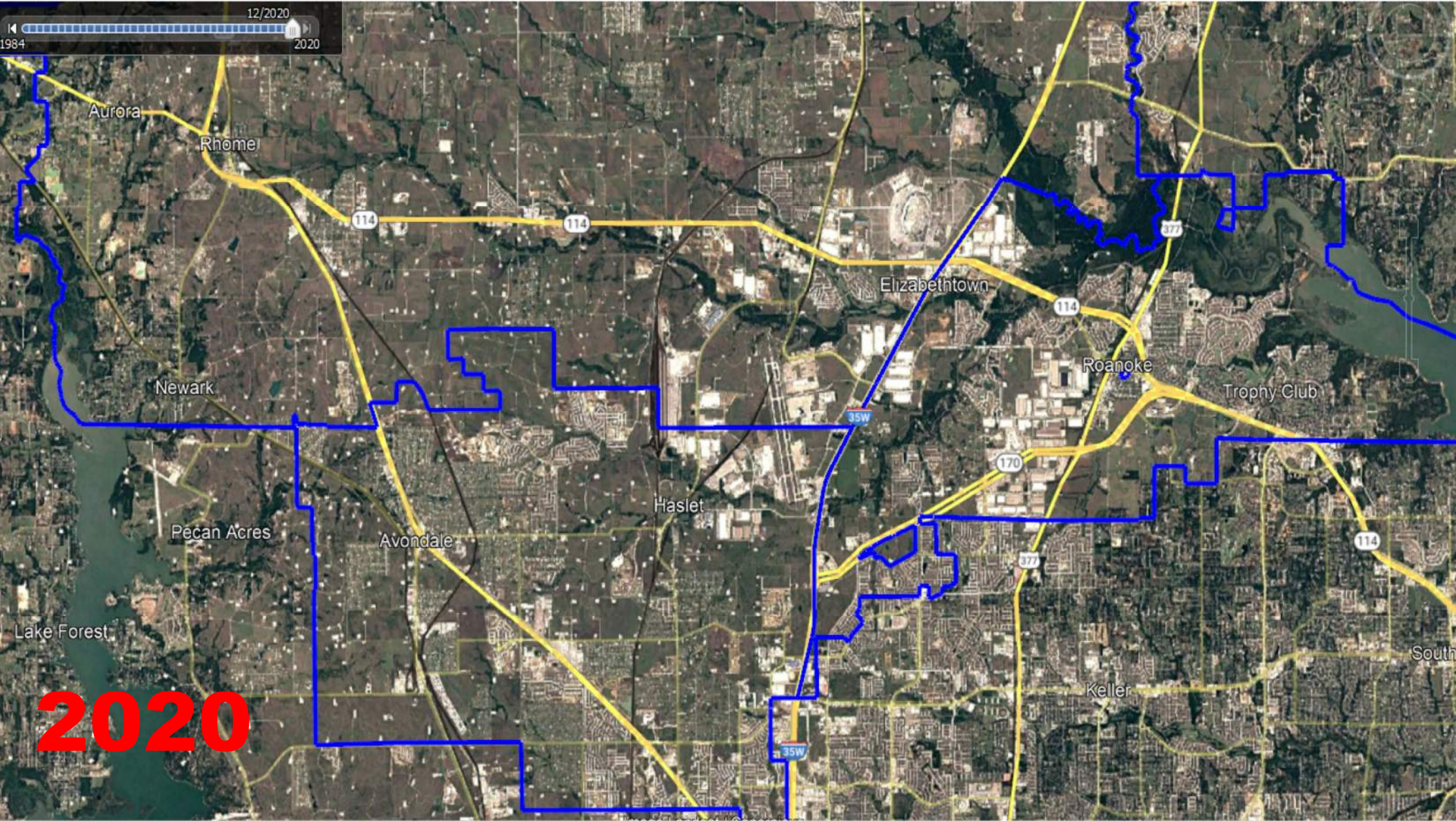


2032: 49,800





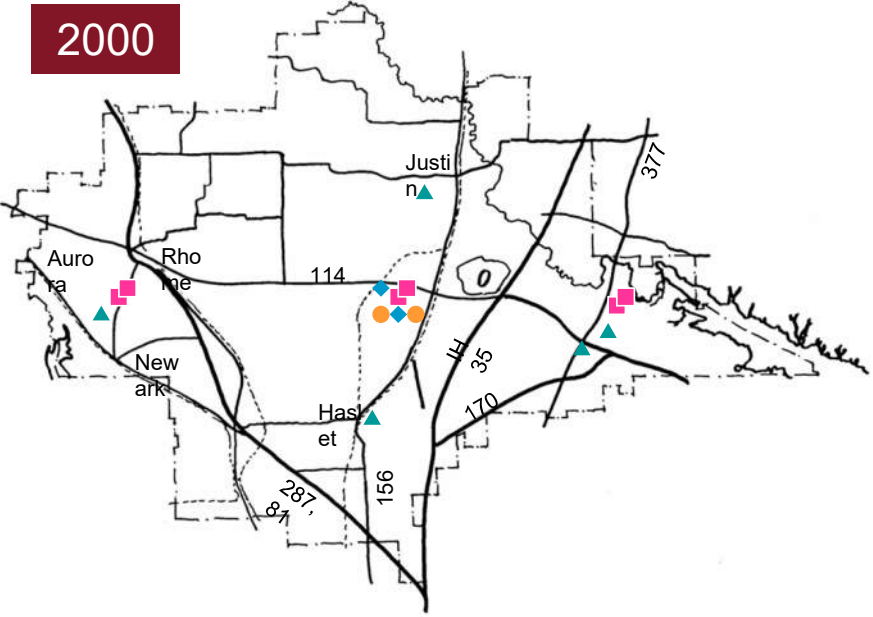
2020



2020

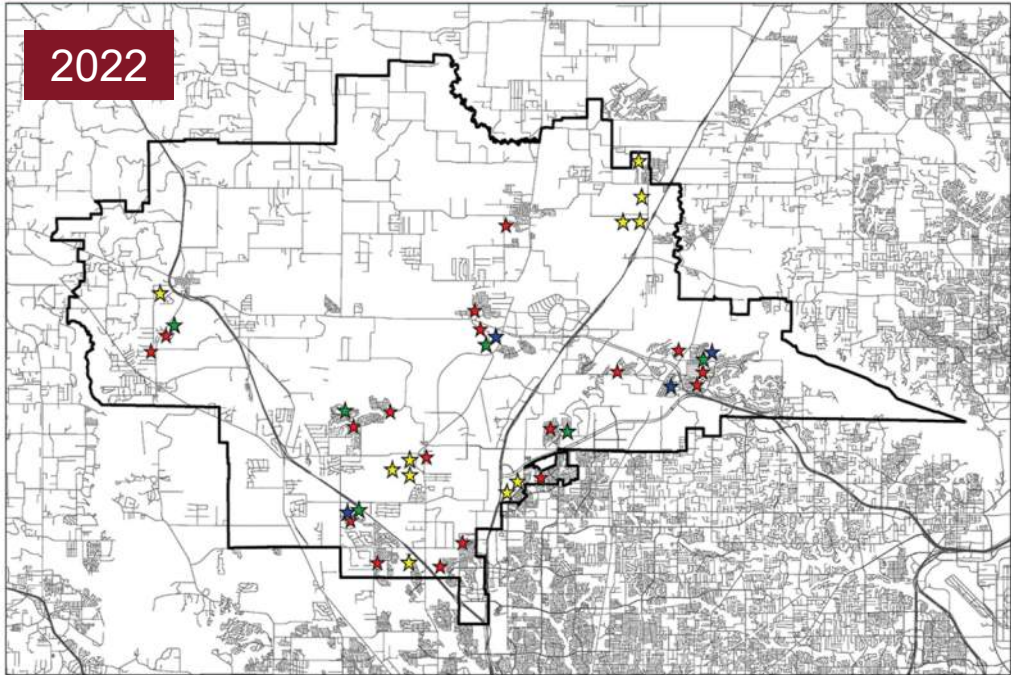
History of the LRPC

2000



- 5,425 students
- 232 Square Miles
- 1,000,000 SF space
- 5 Elementary Schools
- 3 Intermediate Schools
- 3 Middle Schools
- 1 High School
- 2 Alternative Schools

2022

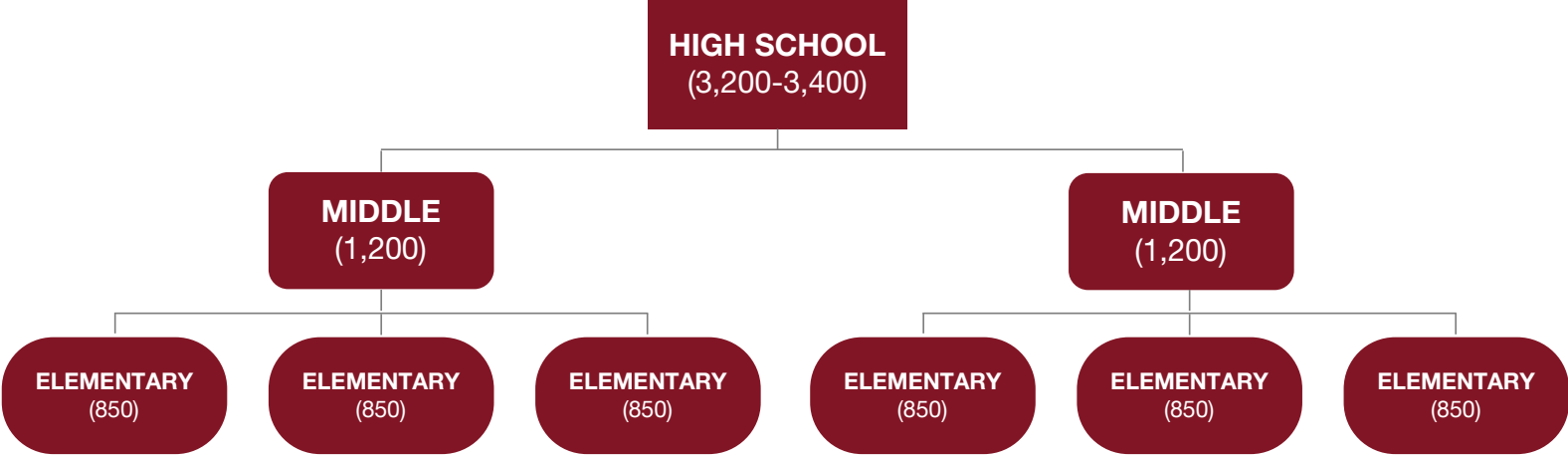


- 29,144 students
- 234 Square Miles
- 5,400,000+ SF space
- 20 Elementary Schools
- 6 Middle Schools
- 4 High Schools
- 1 Alternative Schools

Feeder Patterns

Current Model

- 6 Elementary Schools (850 capacity = 140 students/grade)
- 2 Middle Schools (1200 capacity = 426 students/grade)
- 1 High School (3,200 – 3,400 capacity = 850 students/grade)



Construction Update

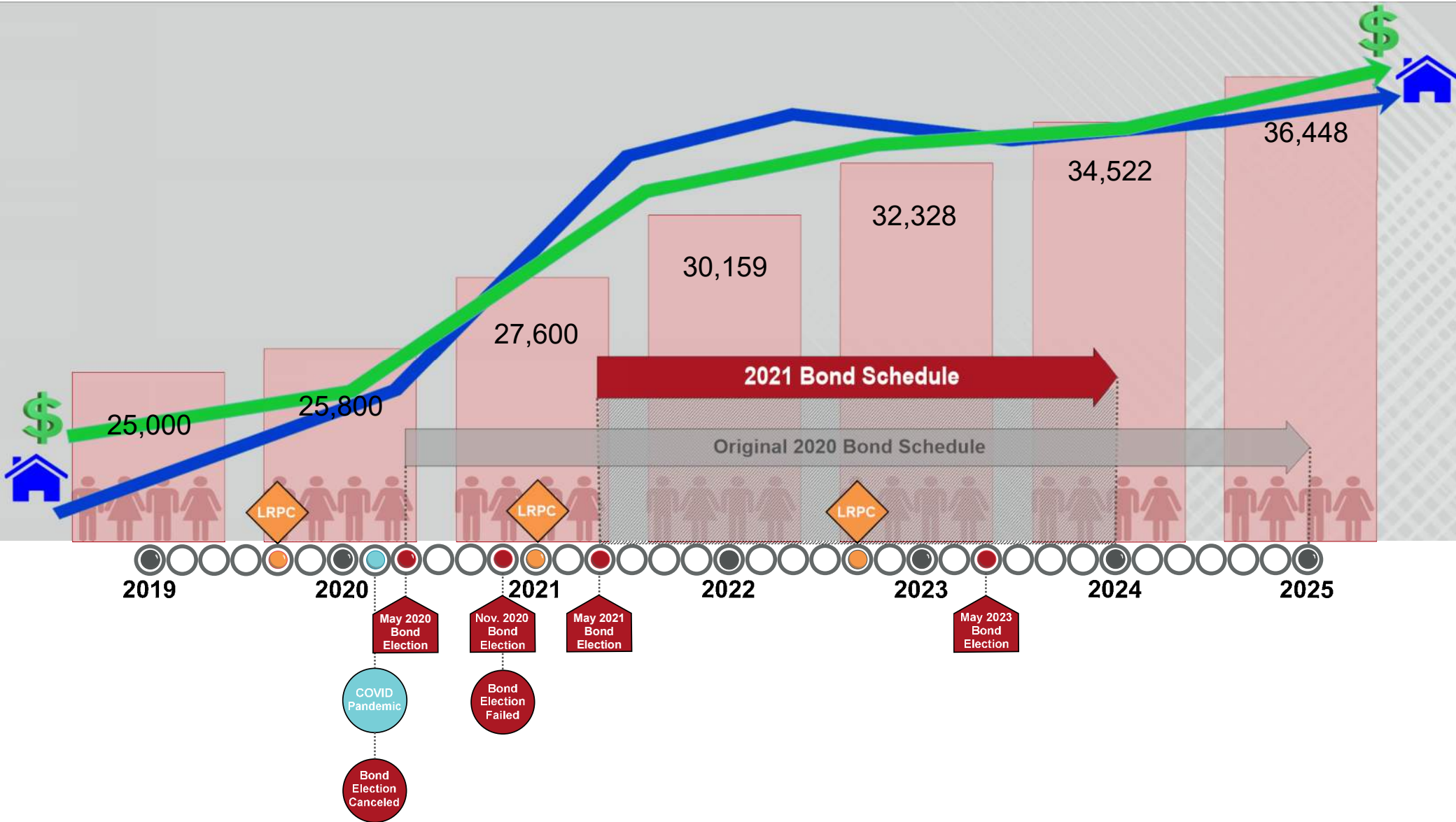


A screenshot of the Northwest ISD Construction Website. The page features the NISD logo (Northwest Independent School District) at the top left, with the tagline "FACILITIES PLANNING AND CONSTRUCTION". Navigation links include "Active Projects", "Projects in Planning", "Completed Projects", and "Background + Resources". The main heading reads "WELCOME TO THE Northwest ISD Construction Website". Below this, it specifies "C.W. Worthington Middle School" and "NISD MIDDLE SCHOOL #7 LOCATED IN THE LETARA SUBDIVISION". At the bottom, it states "ESTIMATED COMPLETION JULY 2023". The background of the website is a blurred image of a group of people in yellow and blue.



➔ Keep up with construction at nisdtxconstruction.org.

nisdtxlrpc.org



2019

2020

2021

2022

2023

2024

2025

May 2020
Bond Election

Nov. 2020
Bond Election

May 2021
Bond Election

May 2023
Bond Election

COVID
Pandemic

Bond Election
Failed

Bond Election
Canceled

LRPC

LRPC

LRPC

2021 Bond Schedule

Original 2020 Bond Schedule



Anticipated Forecasting Schedule

	2019-20	2020-21	2021-22	2022-23	2023-24	2024-25	2025-26	2026-27	2027-28	2028-29	2029-30	
ELEM. SCHOOLS	Lance Thompson (#19)	Haslet Elem. Replacement	New Elem. #20 (Berkshire)		New Elem. #21 (Livengood Carter)	New Elementary #23	New Elementary #24	New Elementary #26	New Elementary #27	New Elementary #28	New Elementary #29	
	Expansions		Renovate Existing Haslet Elem.	New Elem. #22 (Daniel)	Replacement Elementary #1 (Hatfield)							New Elementary #25
	Sendera Ranch			Replacement Elementary #2 (Seven Hills)	Replacement ES (Justin)							Replacement ES (PVES)
	JC Thompson					Nance Addition						
MIDDLE SCHOOLS		MS Fine Arts Additions & Renovations			New Middle School #7 (Worthington)	Pike MS Replacement	New Middle School #8		New Middle School #9		New Middle School #10	
		Medlin Addition										
HIGH SCHOOLS		Expansions - BNHS - EHS				NHS Expansion		New Comp. High School #4	New Stadium #2		New Comp. High School #5	



LRPC Parameters

- The Committee will be comprised of individuals from the community who represent the diversity and multifaceted interests within Northwest ISD.
- NISD administrative staff and district consultants will aid the Committee and serve as information providers.
- The Committee shall engage in productive dialogue, strive to be objective and maintain a district-level perspective at all times.
- The Committee will have access to data and resources provided by NISD in order to develop appropriate facility recommendations.

LRPC Parameters

- Recommendations will be reached by a consensus of the committee.
- Recommendations should be based on current, relevant data and best practices and adhere to law and policy that govern school construction and bond issue requirements.
- Significant recommendations for building new facilities and/or renovating existing facilities will require a source of funding that is only available with a voter supported bond issue.
- The Committee's role is to provide recommendations to the Board of Trustees and the Board will determine the structure and content of any potential bond issue.

Tour

Legacy Learning Center



Safety and Security

Current State | Future Needs



Safety & Security Initiatives

- District standardized door vision kit coverings for all doors and spaces
- Continued standardization of stop the bleed kits and cabinets
- Radio replacement – (life cycle replacements units)
- Radio Accessories – (batteries)
- Wave on Cloud Technologies for communications and LTE support for responder staff
- LP Cameras

Safety & Security Initiatives

- Orchestrate and Ally – Modules
- Radio Wave and devices – Coordinators and Monitors
- Traffic Control devices - barricades pylons and cones
- License Plate Reading Technology
- RMS - Orchestrate - will include parking management etc.
- Call Center EOC technologies and backup systems
- Weapons detections upgrades for NISD Stadium (possibly other events)

Final Thoughts

Reflection | Transparency | Schedule



Reflection

- What is the most important thing you will do as a member of this committee?
- What do you need for this process to be successful?
- What unique strength, skill set, resources or perspective will you add to the process?
- What one question do you have about the process?

Committee Transparency

NORTHWEST ISD
LONG RANGE
PLANNING COMMITTEE

HOME COMMITTEE MEETINGS RESOURCES QUESTIONS

NISD Long Range Planning Committee

As one of the fastest growing school districts in the state that attracts more than 1,400 new students each year, we must continually evaluate our facilities and support systems to determine if our learning environments, equipment and infrastructure are equipped to best support the future of our growing student population.

To assist us in this effort, we rely on input from members of the NISD Long Range Planning Committee (LRPC). The LRPC helps us study and prioritize the facility needs of the school district and assists us in providing recommendations to the Northwest ISD Board of Trustees on possible future building projects.

This website has been created to keep our community informed on the progress of the committee and the facility planning process that led to the 2017 bond election.

THE LRPC IS INVALUABLE TO THE PLANNING PROCESS BECAUSE IT ALLOWS THE DISTRICT TO HEAR FROM AND INCORPORATE MANY DIFFERENT PERSPECTIVES FROM PEOPLE IN THE COMMUNITY.

MEETINGS
The LRPC will meet at least six times in 2019-2020 before making its recommendation to the Board of Trustees.

RESOURCES
A variety of resources, from administrative liaisons to helpful documents, are available to the LRPC.

QUESTIONS
Citizens can submit their own questions or view a list of Frequently Asked Questions.

[View Meeting Details](#) [See Resources](#) [Submit a Question](#)

NORTHWEST ISD
LONG RANGE
PLANNING COMMITTEE

HOME COMMITTEE MEETINGS RESOURCES QUESTIONS

Meetings

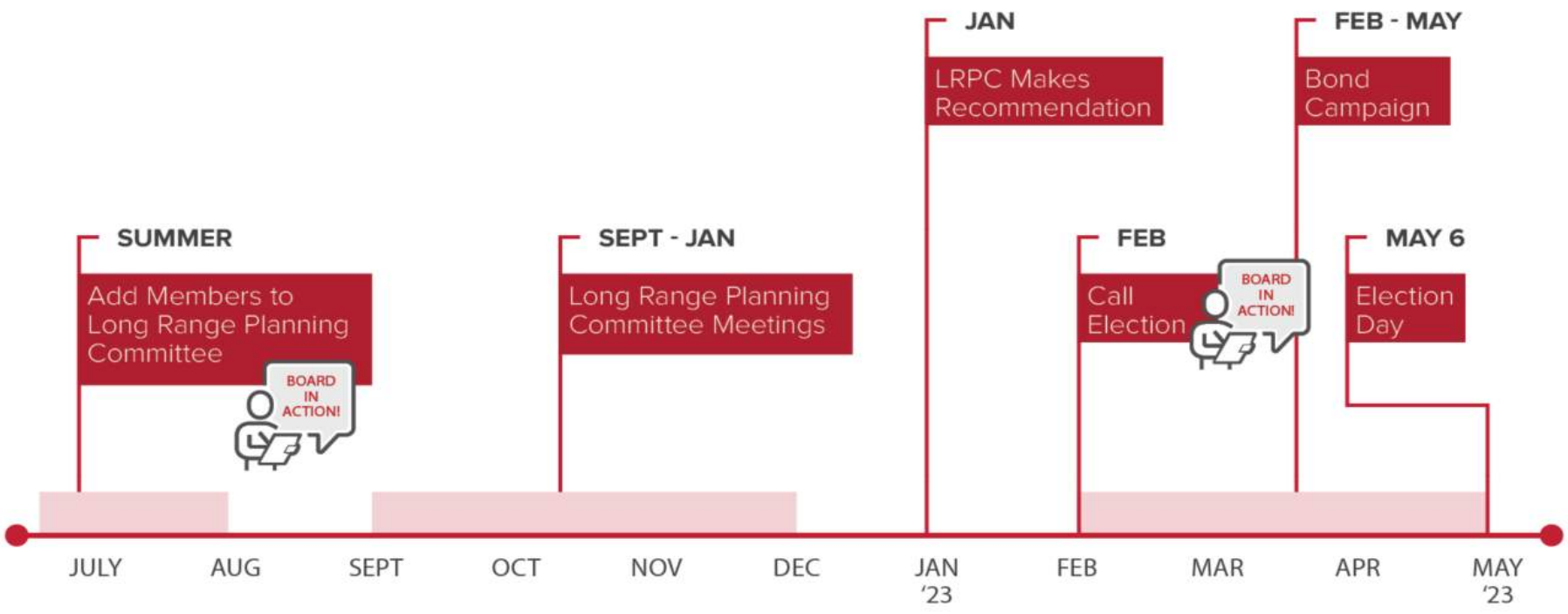
LRPC Meetings



MEETING #1 - TUESDAY, OCTOBER 8, 2019
6:00 p.m.
NISD Administration Building
Board Room

[Agenda](#) [Presentation](#) [Meeting Notes](#)

May 2023 Bond Timeline



Committee Schedule

	Date	Location
Meeting 1	Tuesday, September 6	Legacy Learning Center
Meeting 2	Tuesday, September 20	Berkshire Elementary School
Meeting 3	Tuesday, October 4	Justin Elementary School
Meeting 4	Tuesday, October 18	Chisholm Trail Middle School
Meeting 5	Tuesday, November 8	Adams Middle School
Meeting 6	Tuesday, November 29	Eaton High School
Meeting 7	Tuesday, December 13	Northwest High School
Meeting 8	Tuesday, January 10	Legacy Learning Center
Recommendation	Monday, January 23	Administration Building
Board Meeting	Monday, February 13	Administration Building