



NORTHWEST ISD
**LONG RANGE
PLANNING**
COMMITTEE

Meeting #3
October 4, 2022



Welcome

- Meeting #2 Recap and Growth Game
- Technology
- Educational Needs for Early Childhood
- Weighting Factors & Grading Criteria
- Tour
- Construction Cost Forecasting
- Reflection and Discussion
- Wrap Up

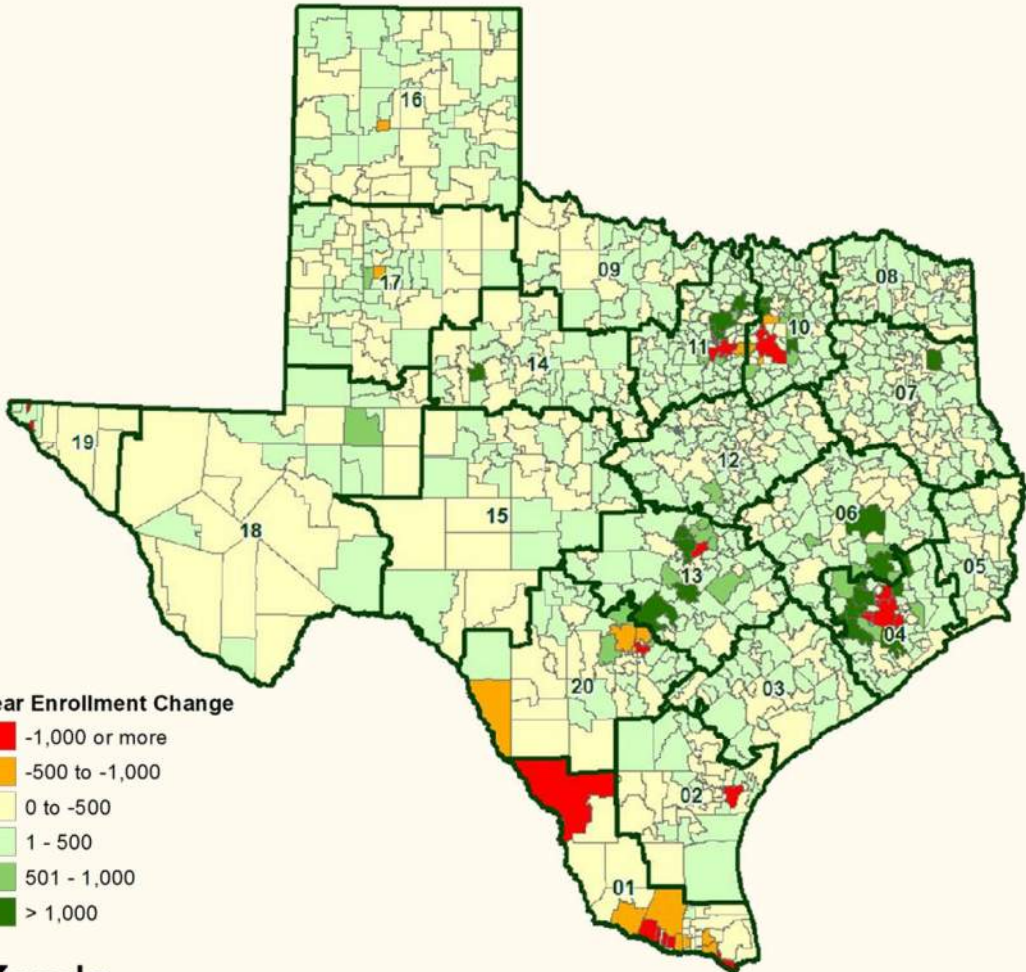
NORTHWEST ISD
**LONG RANGE
PLANNING
COMMITTEE**



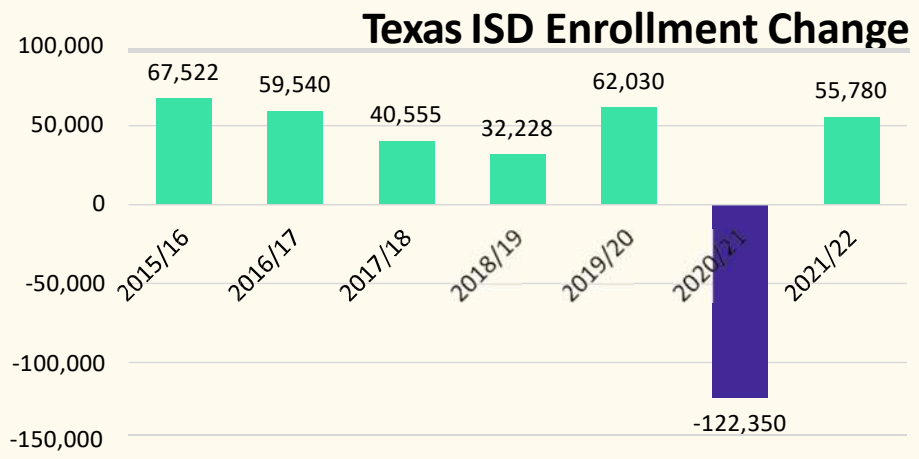
Meeting #2 Board Summary



State Enrollment Trends



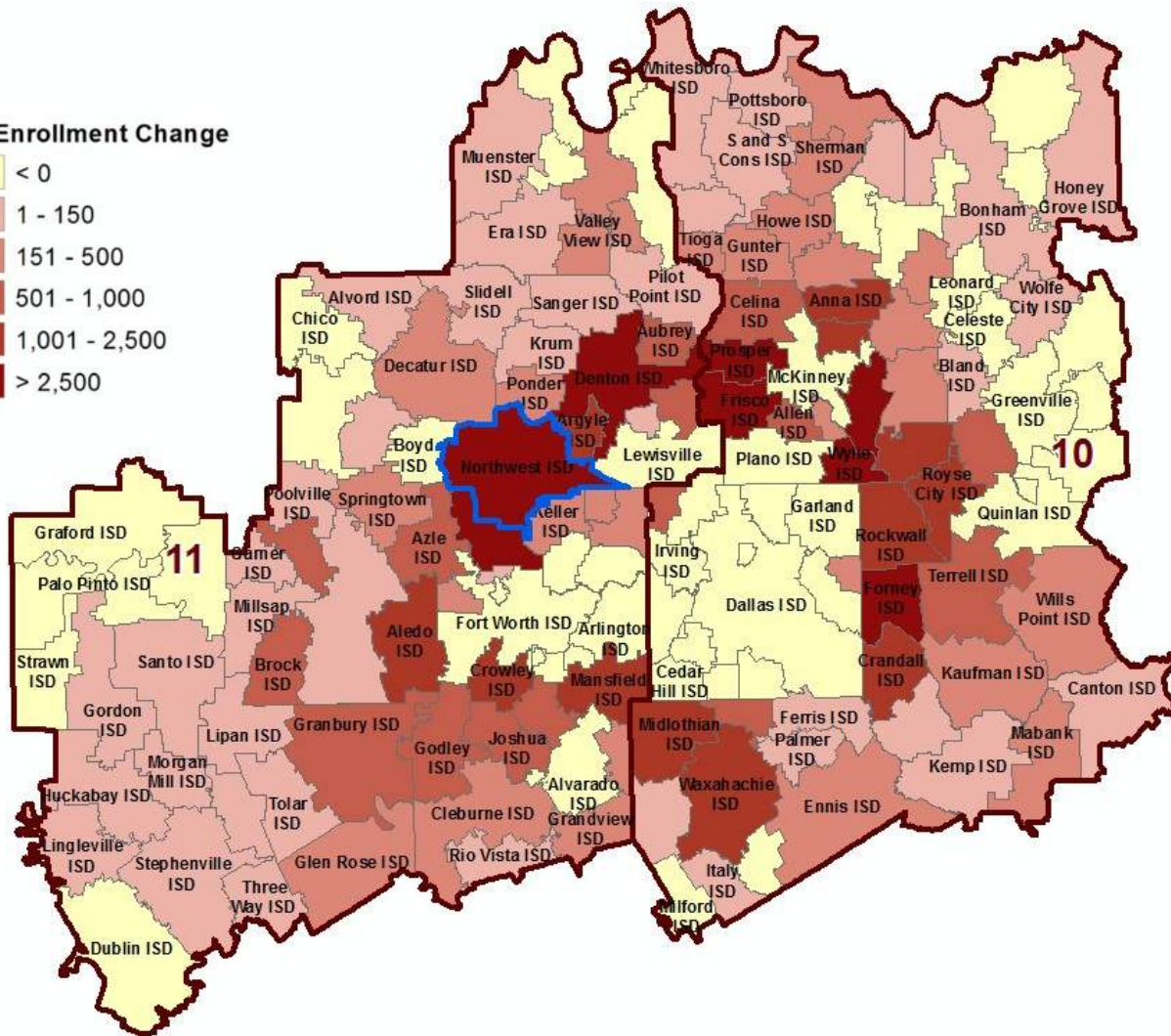
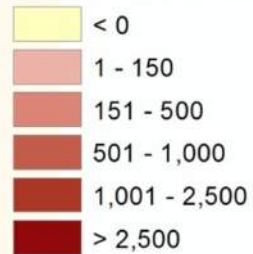
2021/22 State Enrollment	
Total Enrollment	5,427,370
Total Growth	55,780





Region 10 & 11 Enrollment Trends

5 Yr Enrollment Change



- Northwest ISD enrollment grew by 5,539 students between 2016/17 and 2021/22, an increase of 25.1%

Rank	DISTRICT	5-YEAR CHANGE (16/17-21/22)	ANNUAL CHANGE (20/21-21/22)	SQUARE MILES
1	Northwest ISD	5,539	2,200	252.1
2	Denton ISD	3,323	1,684	170.5
3	Eagle Mt-Saginaw ISD	2,811	1,219	72.9
4	Aledo ISD	1,925	645	131.1
5	Argyle ISD	1,893	543	35.2
6	Mansfield ISD	1,250	432	94.0
7	Crowley ISD	1,063	547	57.2
8	Little Elm ISD	912	179	38.6
9	Burleson ISD	850	199	50.2
10	Aubrey ISD	711	468	46.0



DFW New Home Ranking Report

ISD Ranked by Annual Closings – 2Q22

Rank	District Name	Annual Starts	Annual Closings	Inventory	VDL	Futures
1	NORTHWEST ISD*	4,519	3,608	2,508	3,040	36,070
2	DENTON ISD	2,817	2,753	2,160	3,124	31,273
3	FORNEY ISD	2,484	2,712	1,109	2,412	30,175
4	PROSPER ISD	2,844	2,630	2,323	3,032	21,195
5	FRISCO ISD	1,590	1,799	1,291	1,339	9,749
6	DALLAS ISD	2,031	1,614	1,834	2,128	6,257
7	PRINCETON ISD	2,434	1,557	1,609	1,826	9,571
8	ROYSE CITY ISD	1,812	1,312	1,348	1,929	8,515
9	MIDLOTHIAN ISD	1,341	1,157	916	1,037	20,949
10	CROWLEY ISD	1,334	1,154	796	2,130	16,373
11	CRANDALL ISD	1,486	1,138	890	1,021	13,856
12	WAXAHACHIE ISD	1,030	1,072	540	1,172	26,958
13	LEWISVILLE ISD	1,242	1,015	989	1,208	2,504
14	EAGLE MT-SAGINAW ISD	1,225	987	820	2,277	16,479
15	ROCKWALL ISD	1,411	942	1,214	2,369	8,989
16	MCKINNEY ISD	1,146	940	883	1,512	14,761
17	ANNA ISD	1,164	913	732	880	7,162
18	CELINA ISD	1,330	880	1,035	765	33,549
19	AUBREY ISD	1,590	841	1,154	680	5,737
20	COMMUNITY ISD	1,245	835	895	706	8,679

* Based on additional Templeton Demographics housing research

**Includes Age-Restricted subdivisions

Elementary Campus Utilization

Elementary Schools	Nominal Building Capacity	2022-23 Building Capacity	% Current Capacity
Beck	850	725	85.00%
Berkshire	850	706	83.00%
Haslet	850	883	103.00%
Hatfield	450	597	132.00%
Hughes	850	660	77.60%
Granger	850	749	88.00%
Sendera	850	680	80.00%
Peterson	850	702	82.50%
Love	850	749	88.00%
Justin	650	601	92.46%
Lakeview	650	543	83.54%
Nance	650	518	79.69%
Prairie View	650	621	95.54%
Roanoke	850	653	76.82%
Seven Hills	650	649	99.85%
JC Thompson	850	819	96.35%
Carl E Schluter	850	701	82.47%
Lizzie Curtis	850	679	79.88%
Lance Thompson	850	820	96.47%

Secondary Campus Utilization

Middle Schools	Nominal Building Capacity	2022-23 Building Capacity	% Current Capacity
Chisholm	1100	676	61.00%
Pike	1100	1156	105.00%
Tidwell	1200	1047	87.25%
Medlin	1200	990	82.50%
Wilson	1200	1415	118.00%
Adams	1200	1380	115.00%
High School	Nominal Building Capacity	2022-23 Building Capacity	% Current Capacity
Northwest High School	2525	2278	90.22%
BNHS	3200	2813	87.90%
Steele	450	229	50.89%
V.R. Eaton	3200	3278	102.44%

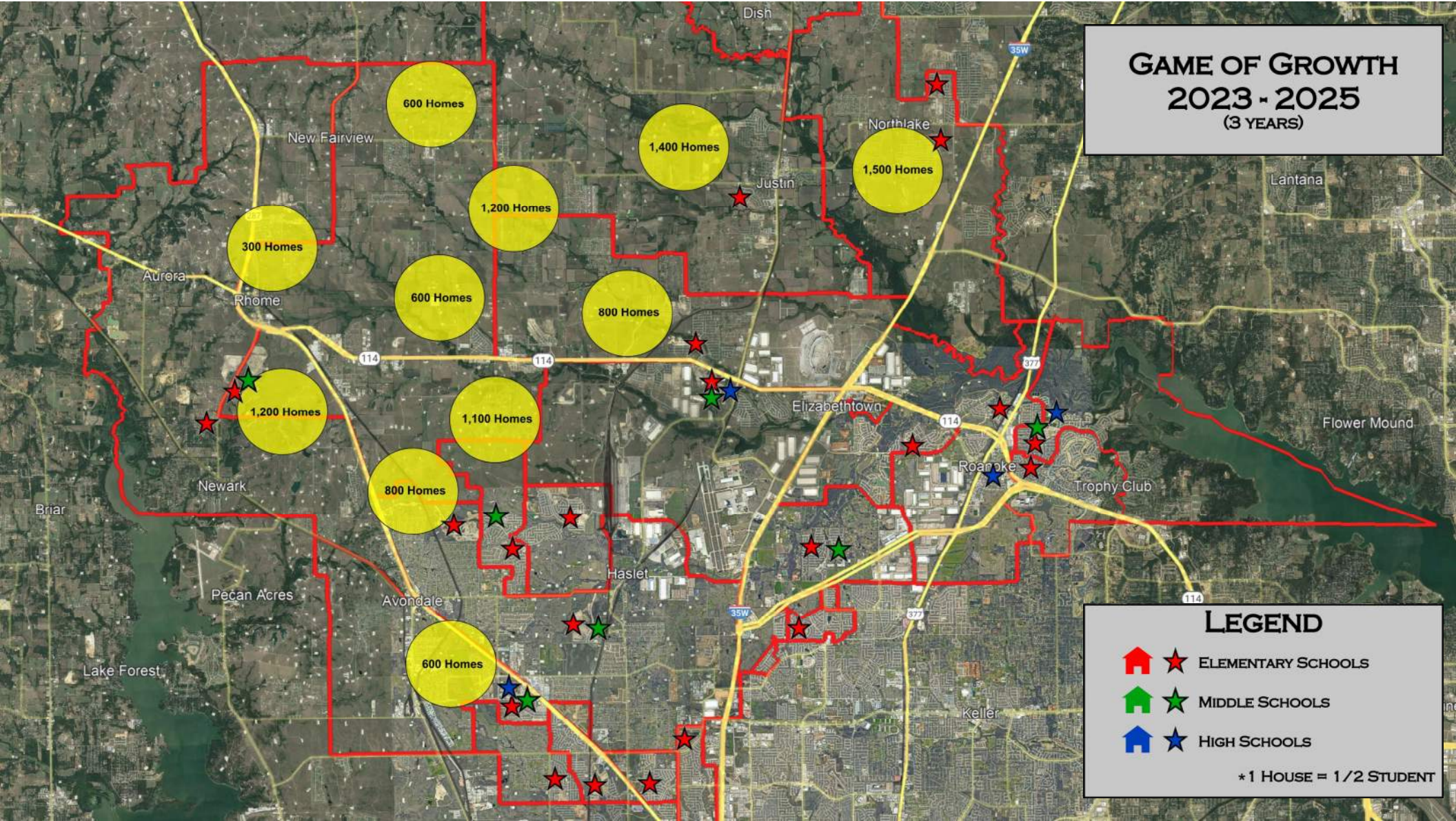
NISD Game of Growth








Game of Growth Instructions

- Map of the district showing multiple hot spots of growth
- Different colored buildings to represent ES, MS, and HS
- Work as a table to plan how many additional schools will be needed over the given time period
- A district representative will be with you capture your solutions

GAME OF GROWTH 2023 - 2025 (3 YEARS)

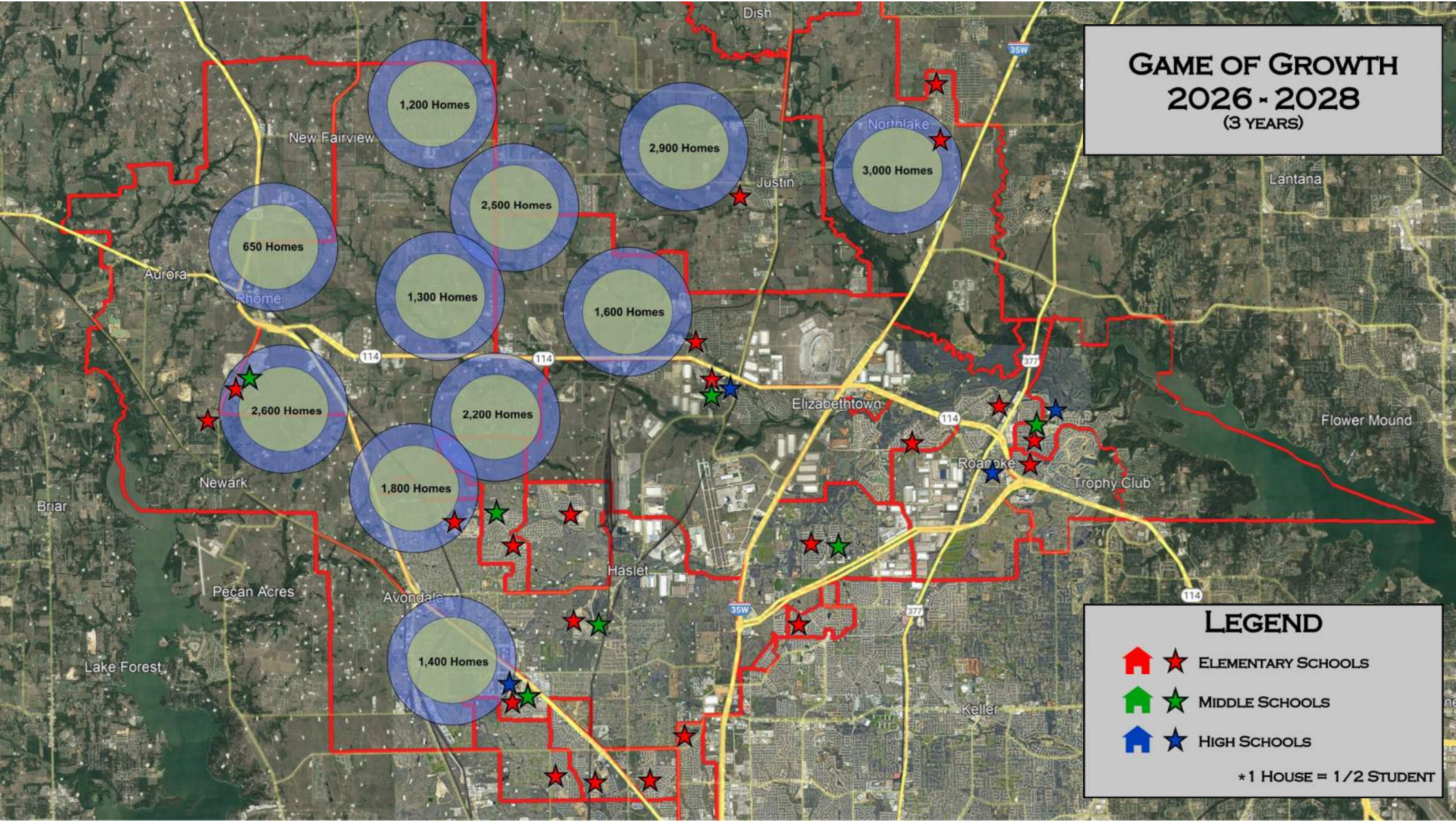


LEGEND

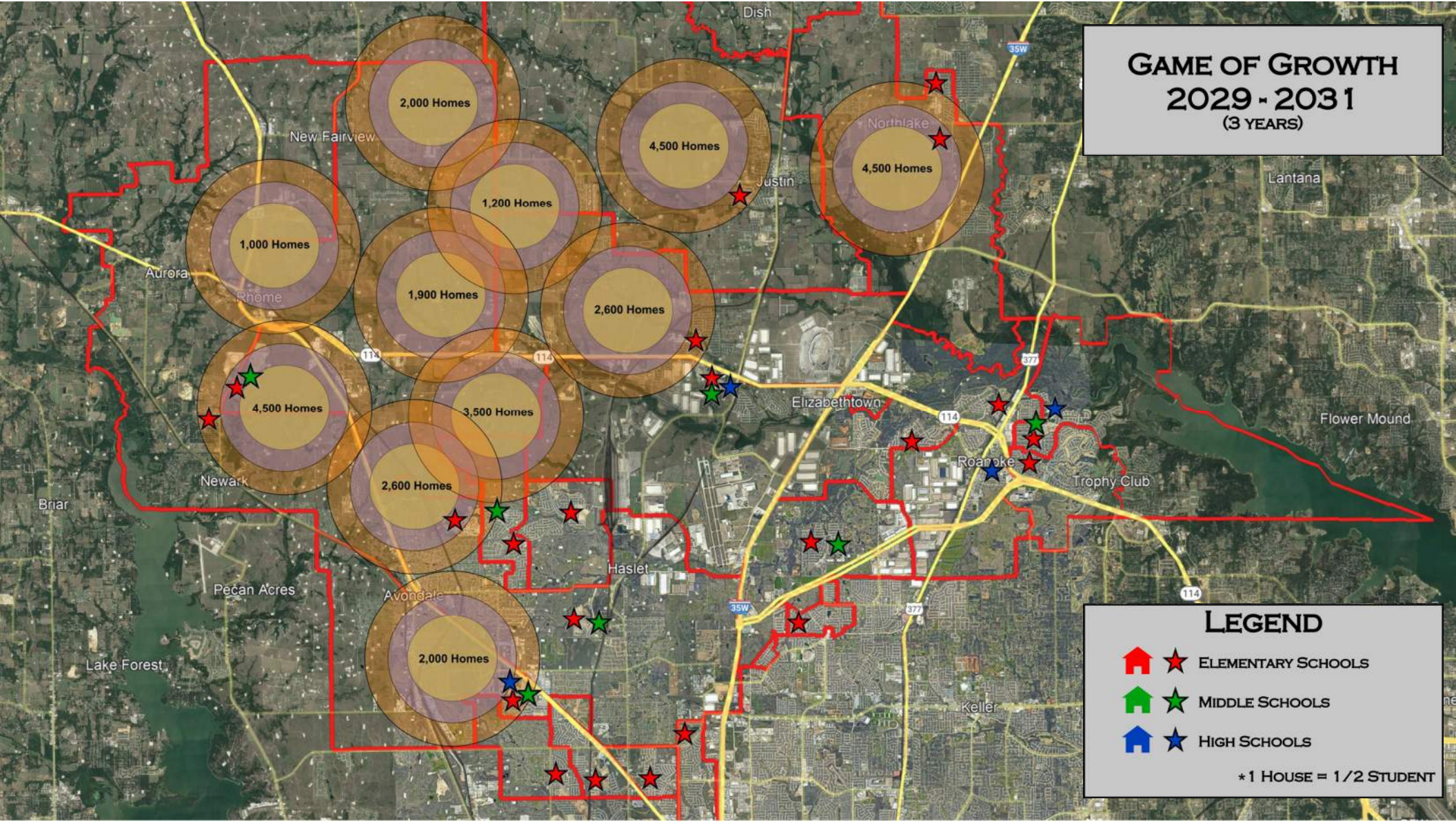
-   ELEMENTARY SCHOOLS
-   MIDDLE SCHOOLS
-   HIGH SCHOOLS

*1 HOUSE = 1/2 STUDENT

GAME OF GROWTH 2026 - 2028 (3 YEARS)



GAME OF GROWTH 2029 - 2031 (3 YEARS)





What will we need to accommodate growth?

- Land
- Buses
- Early Childhood Centers
- Elementary Schools
 - Replacement Schools
- Middle Schools
- High Schools
- Stadium(s)
- Performing Arts Center
- Multipurpose Arena
- Another Ag Facility
- Infrastructure
 - Technology
 - Safety & Security
- Anything Else?

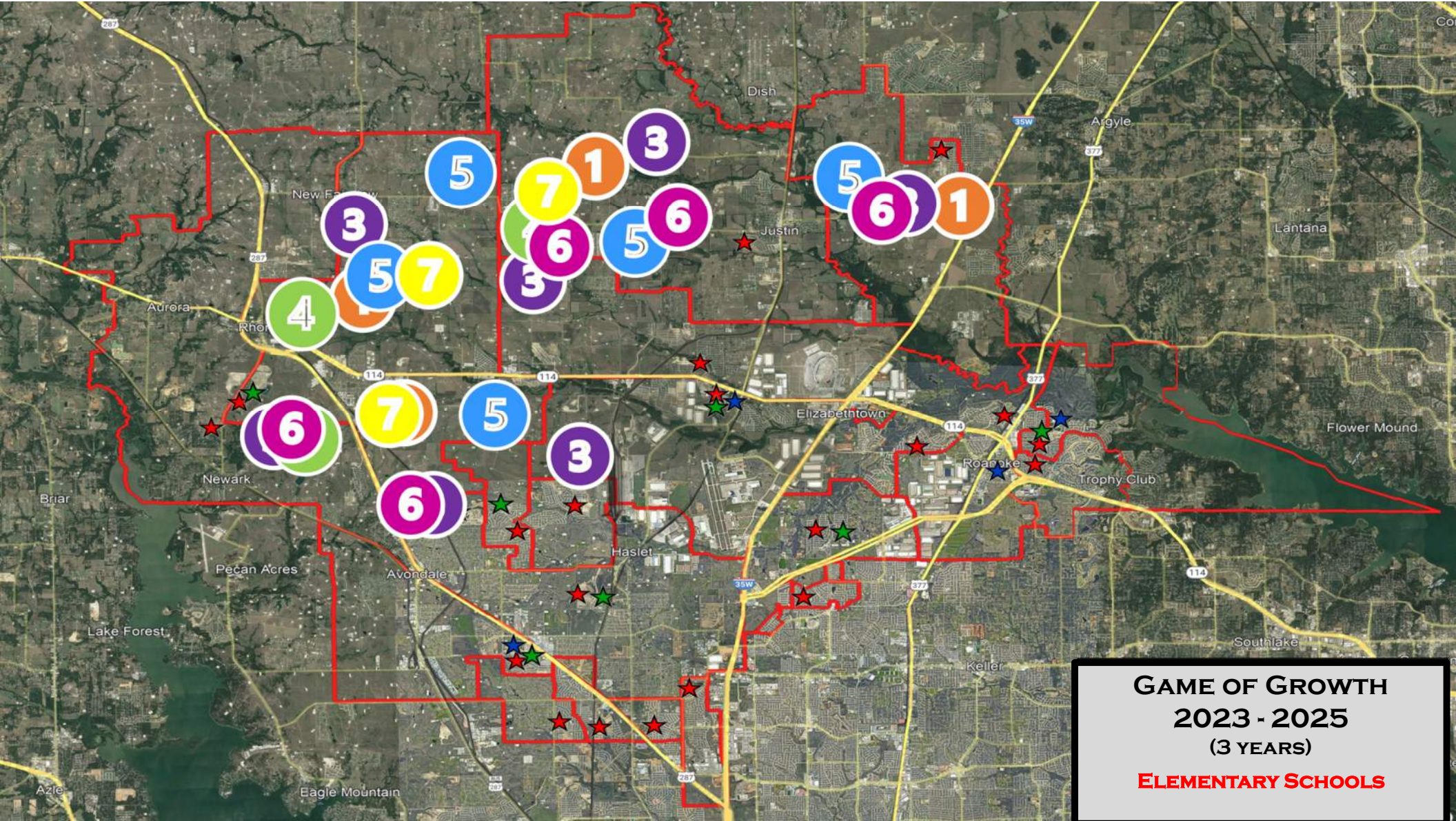
Welcome

- Meeting #2 Recap and Growth Game
- Technology
- Educational Needs for Early Childhood
- Weighting Factors & Grading Criteria
- Tour
- Construction Cost Forecasting
- Reflection and Discussion
- Wrap Up

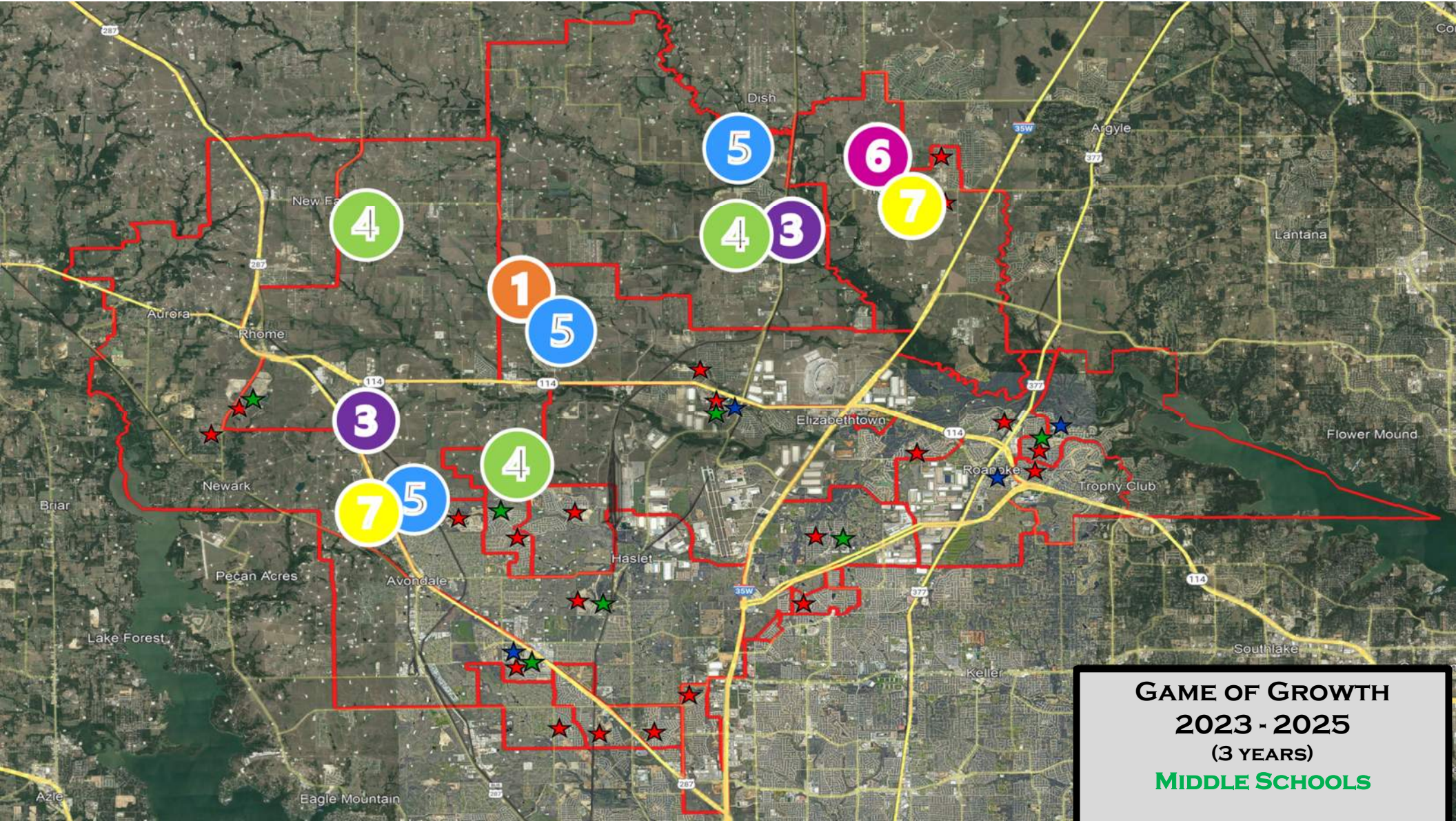
Game of Growth

Committee Responses

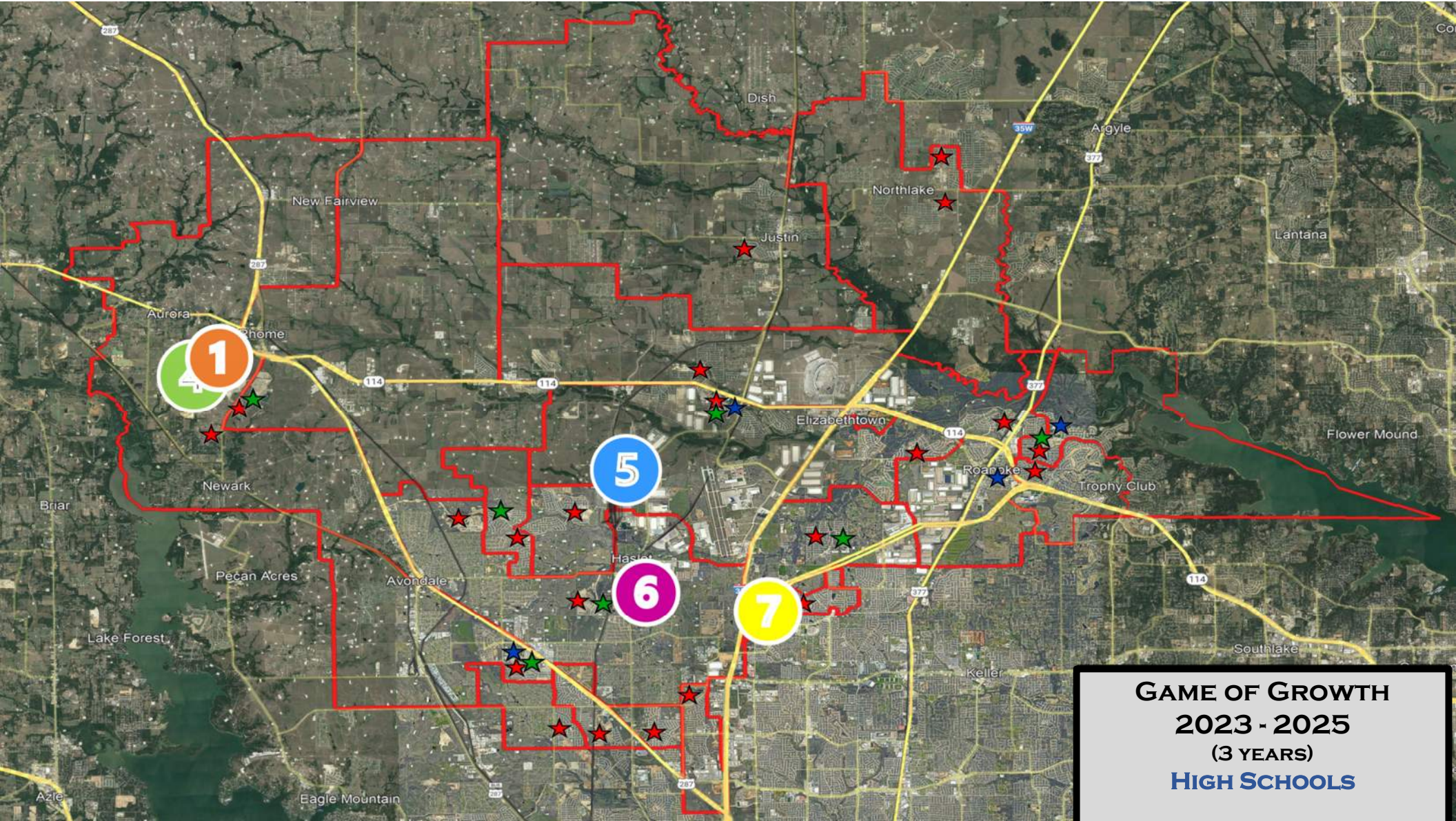




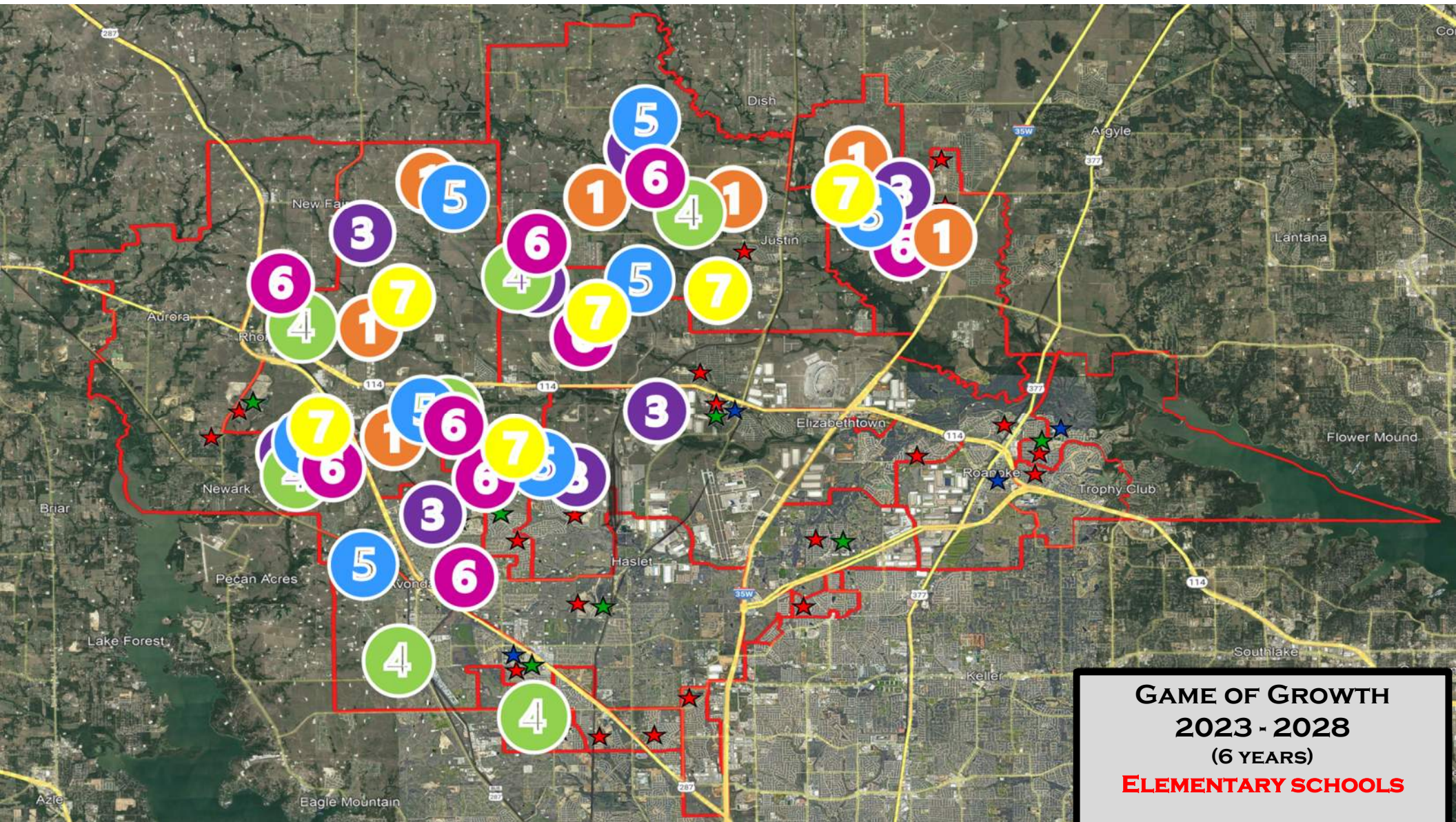
GAME OF GROWTH
2023 - 2025
(3 YEARS)
ELEMENTARY SCHOOLS



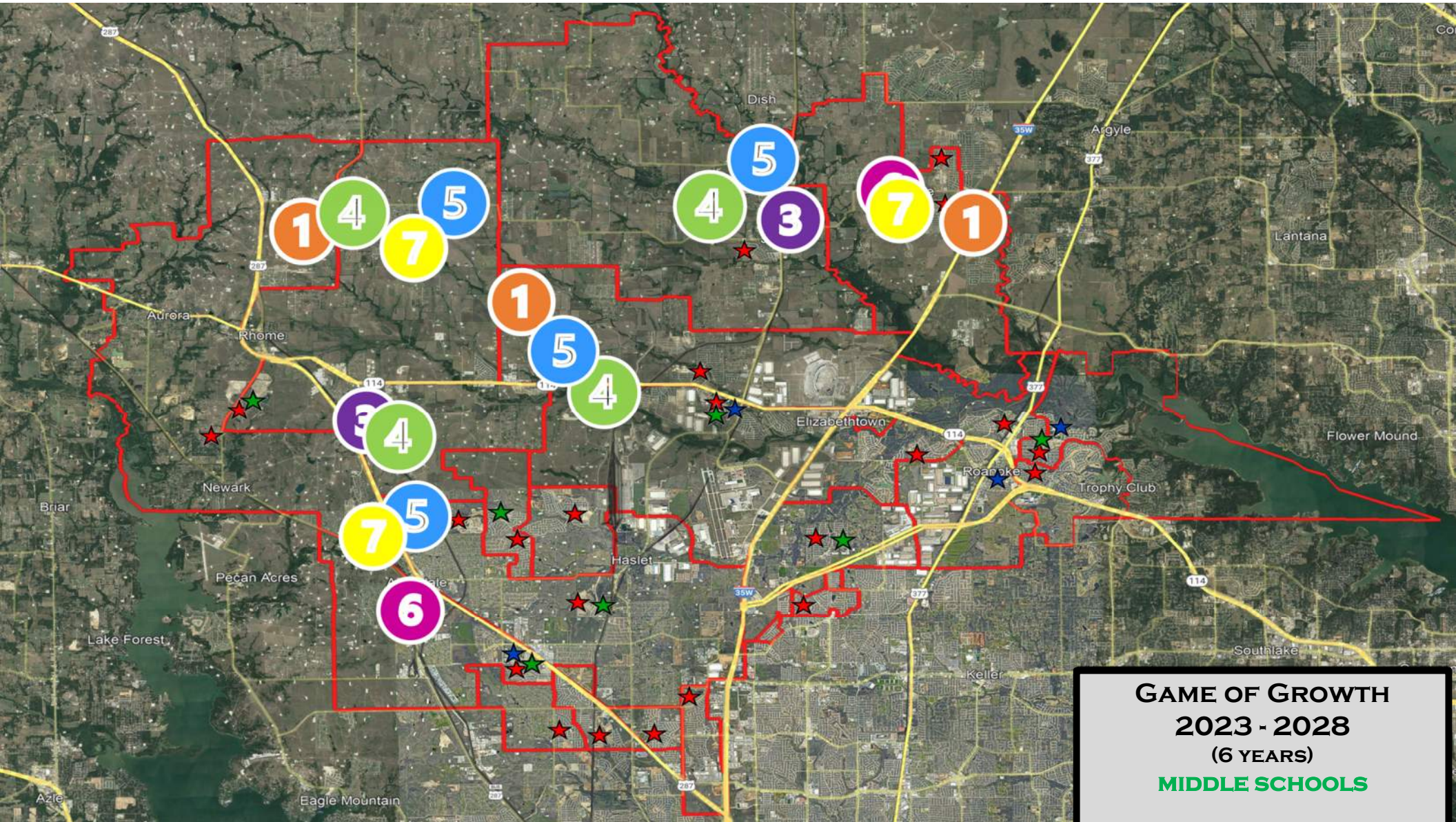
GAME OF GROWTH
2023 - 2025
(3 YEARS)
MIDDLE SCHOOLS



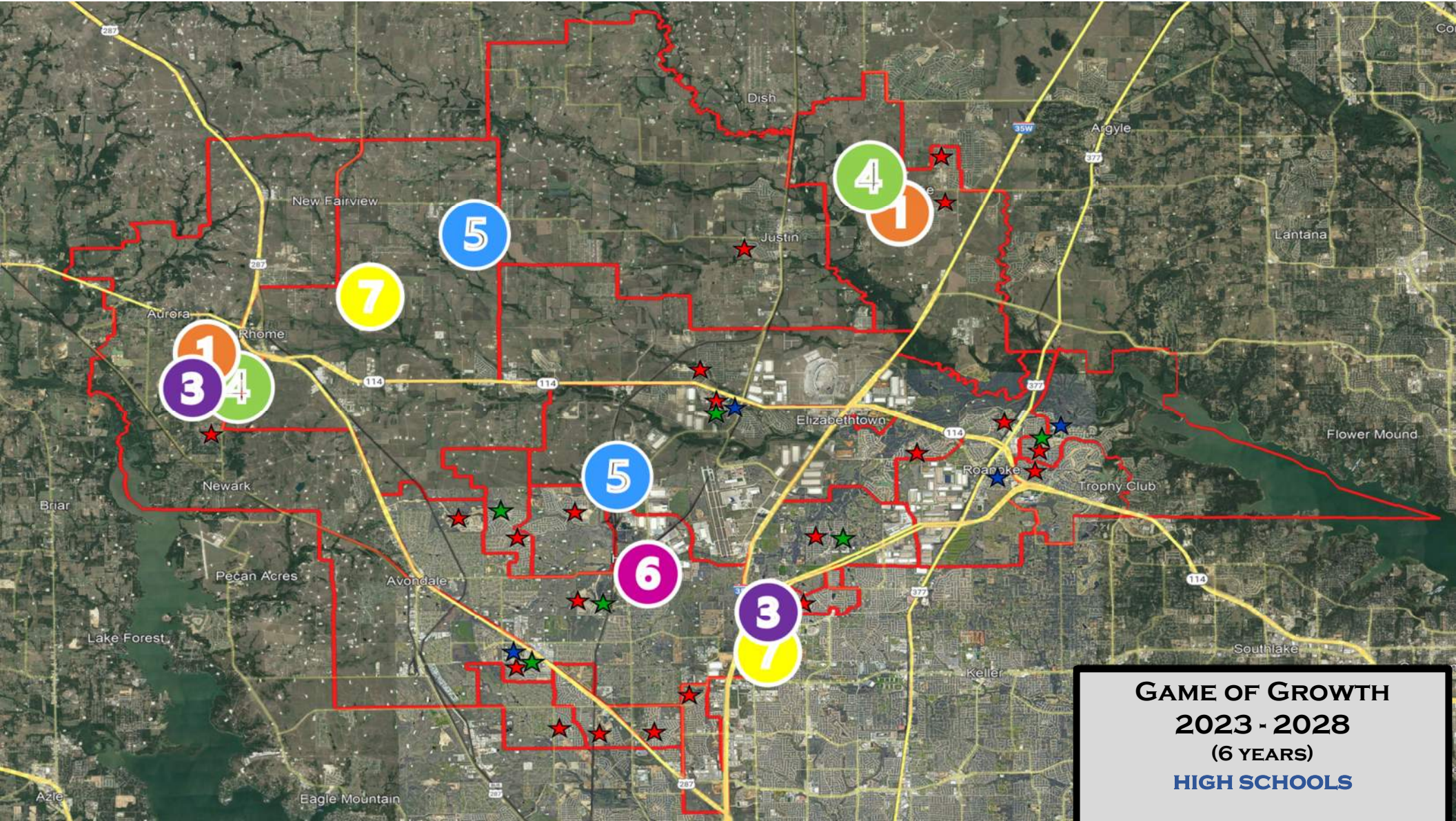
GAME OF GROWTH
2023 - 2025
(3 YEARS)
HIGH SCHOOLS



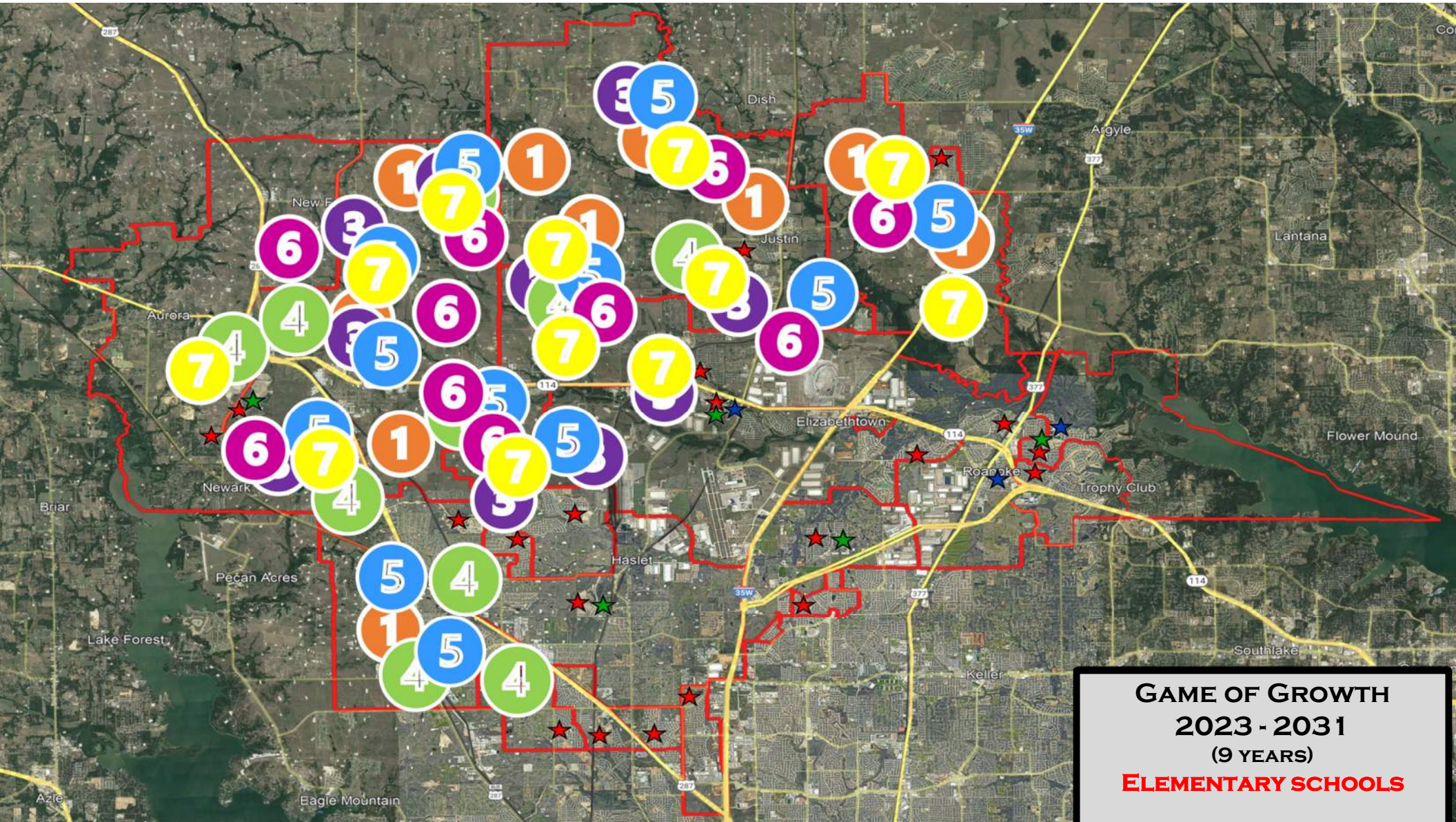
GAME OF GROWTH
2023 - 2028
(6 YEARS)
ELEMENTARY SCHOOLS

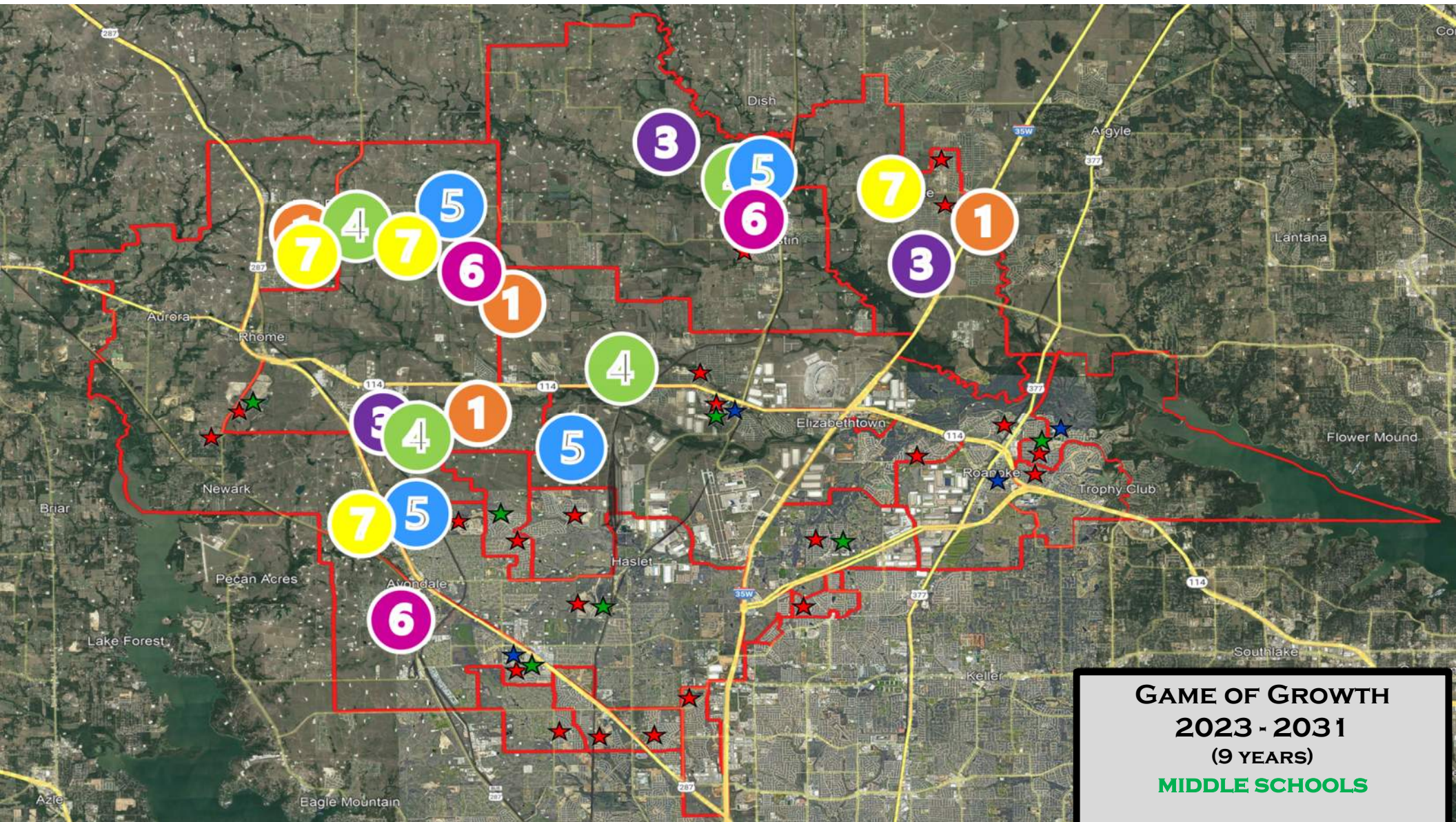


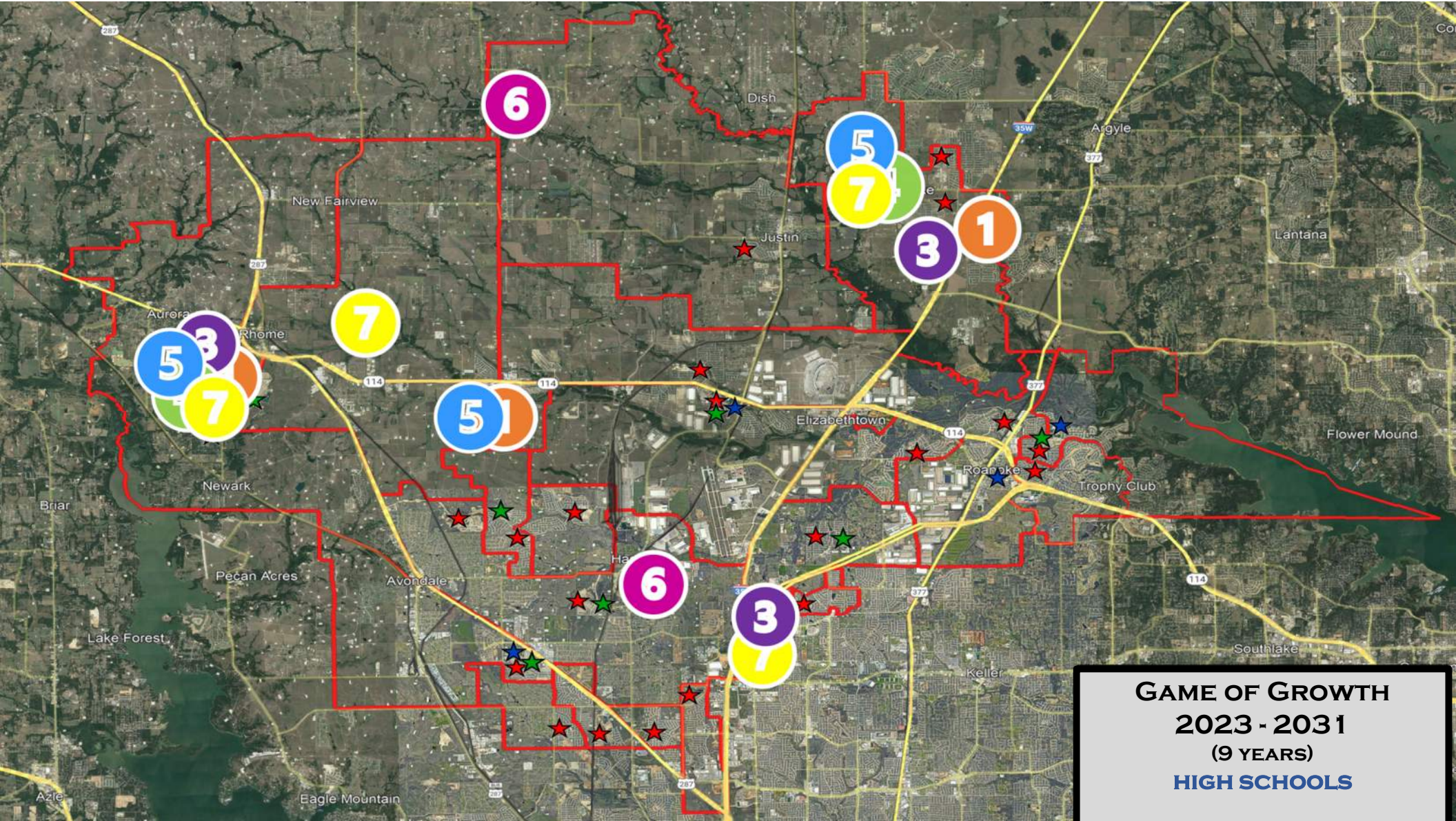
GAME OF GROWTH
2023 - 2028
(6 YEARS)
MIDDLE SCHOOLS



GAME OF GROWTH
2023 - 2028
(6 YEARS)
HIGH SCHOOLS







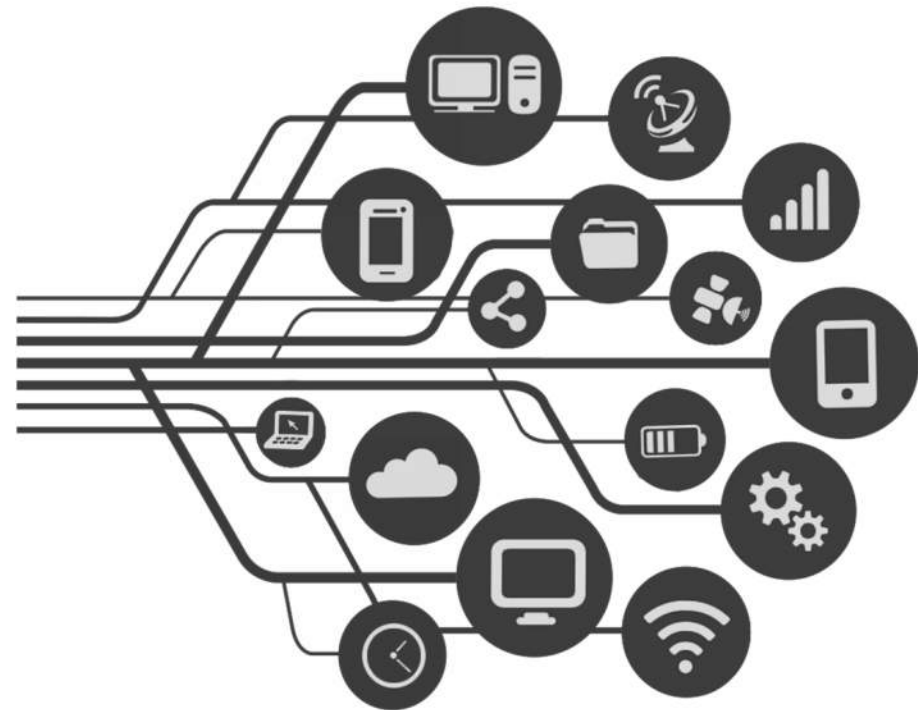
GAME OF GROWTH
2023 - 2031
(9 YEARS)
HIGH SCHOOLS

Technology



Technology Program Overview

- What are the achievements of technology in Northwest ISD?
- How does technology fit into long range planning?
- What are next steps for planning?



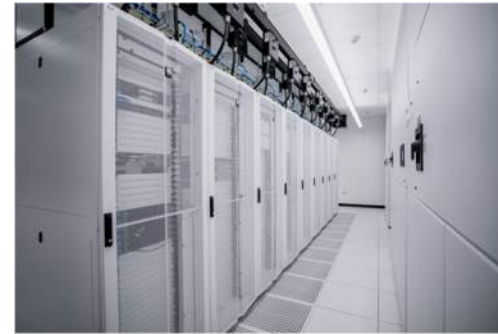
Achievements

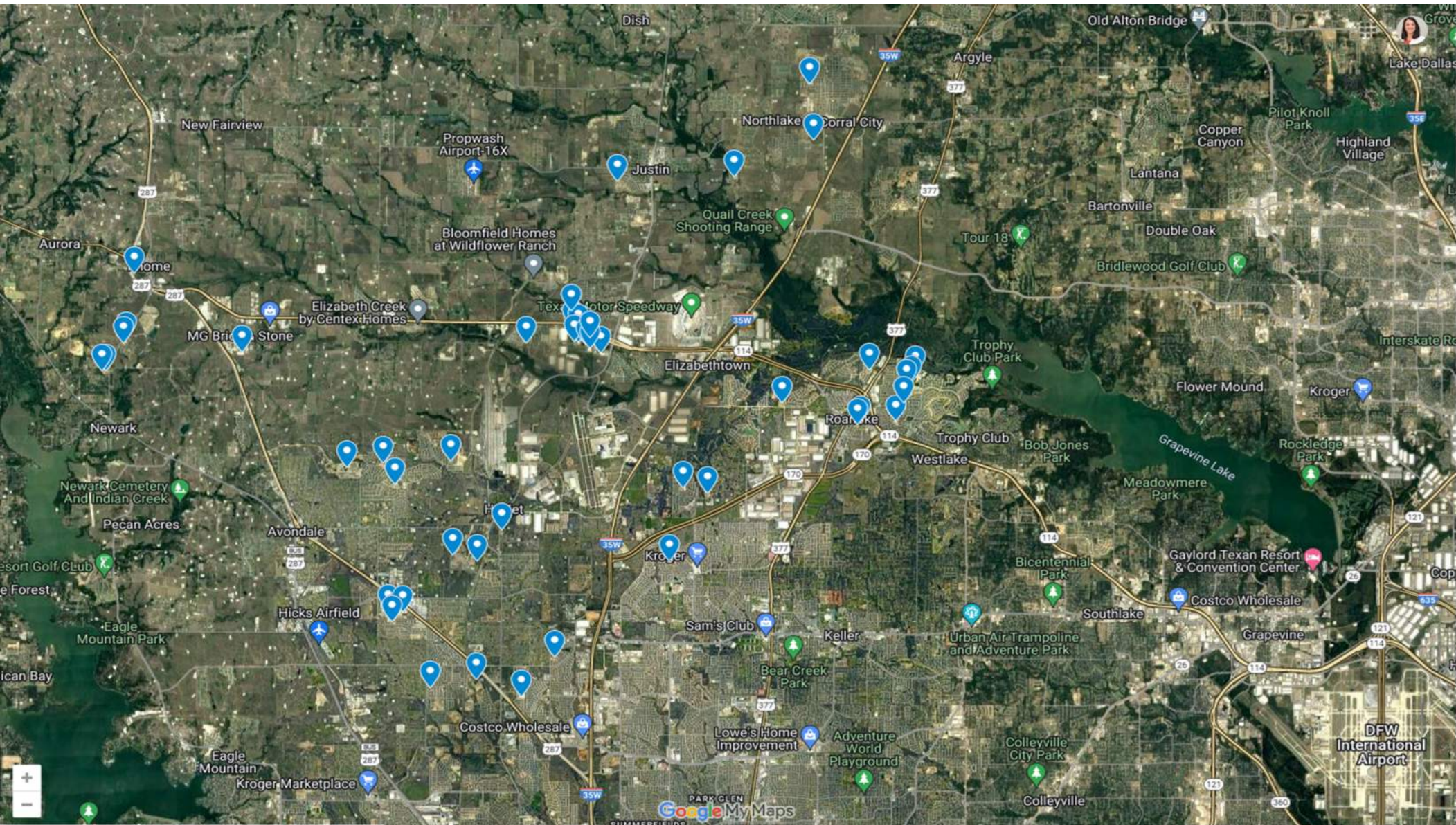
- Students 1:1 Chromebooks
 - K-5 at school
 - 6-12 take home
 - CTE Laptops
- Teachers - laptops and iPads for mobile teaching standards
- National Digital Citizenship Certification
- Prepared for COVID level events

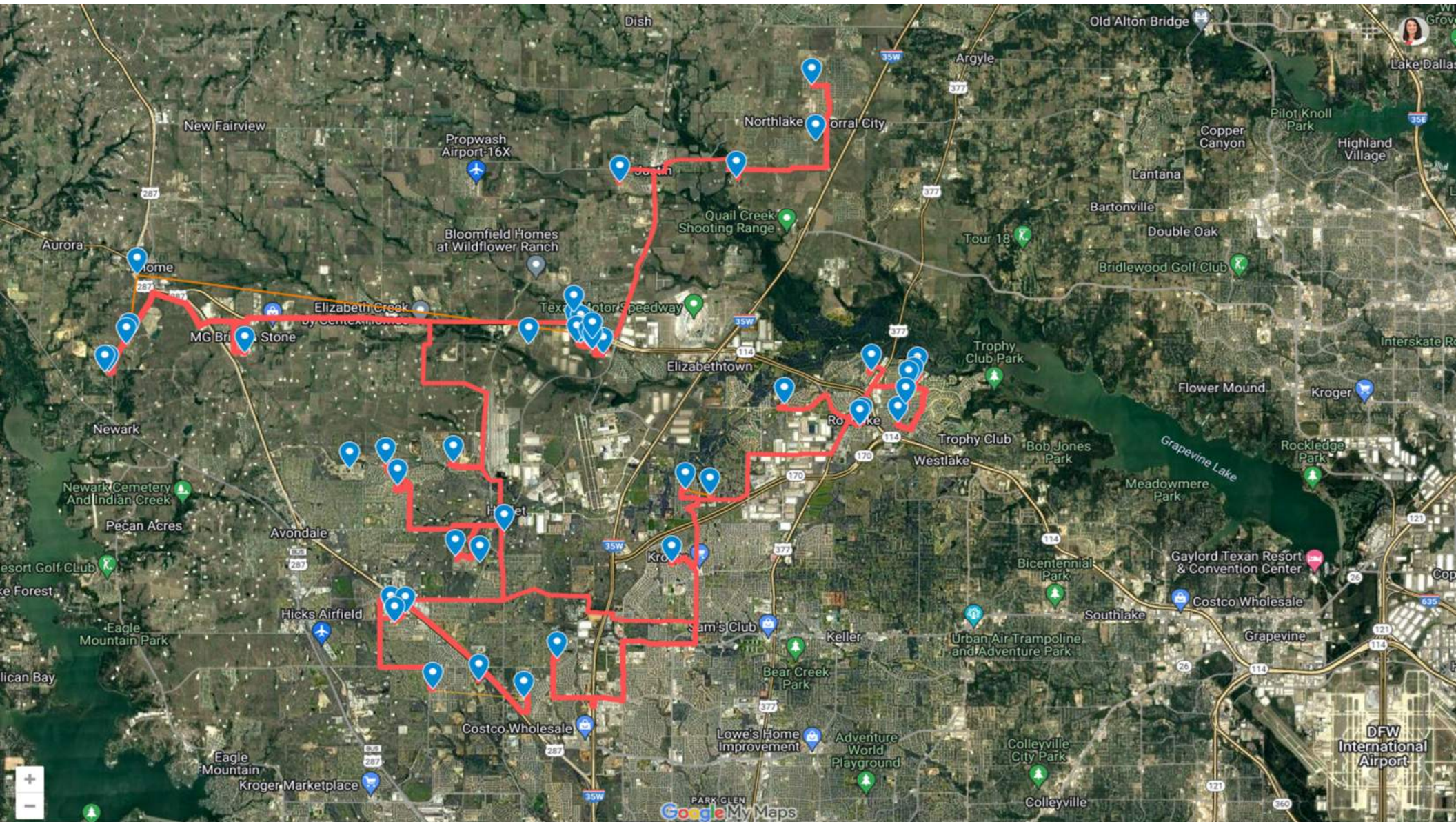


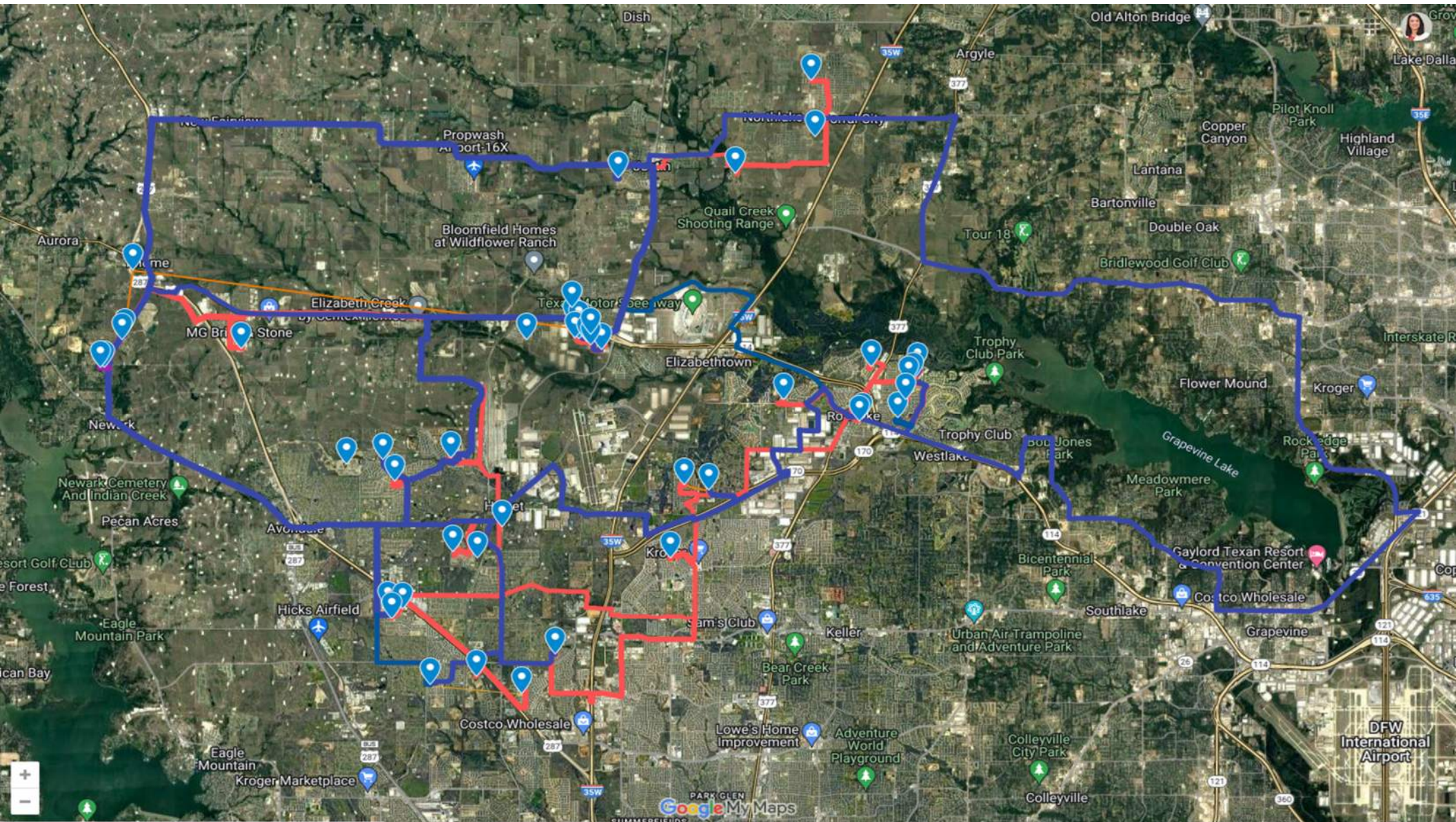
Achievements

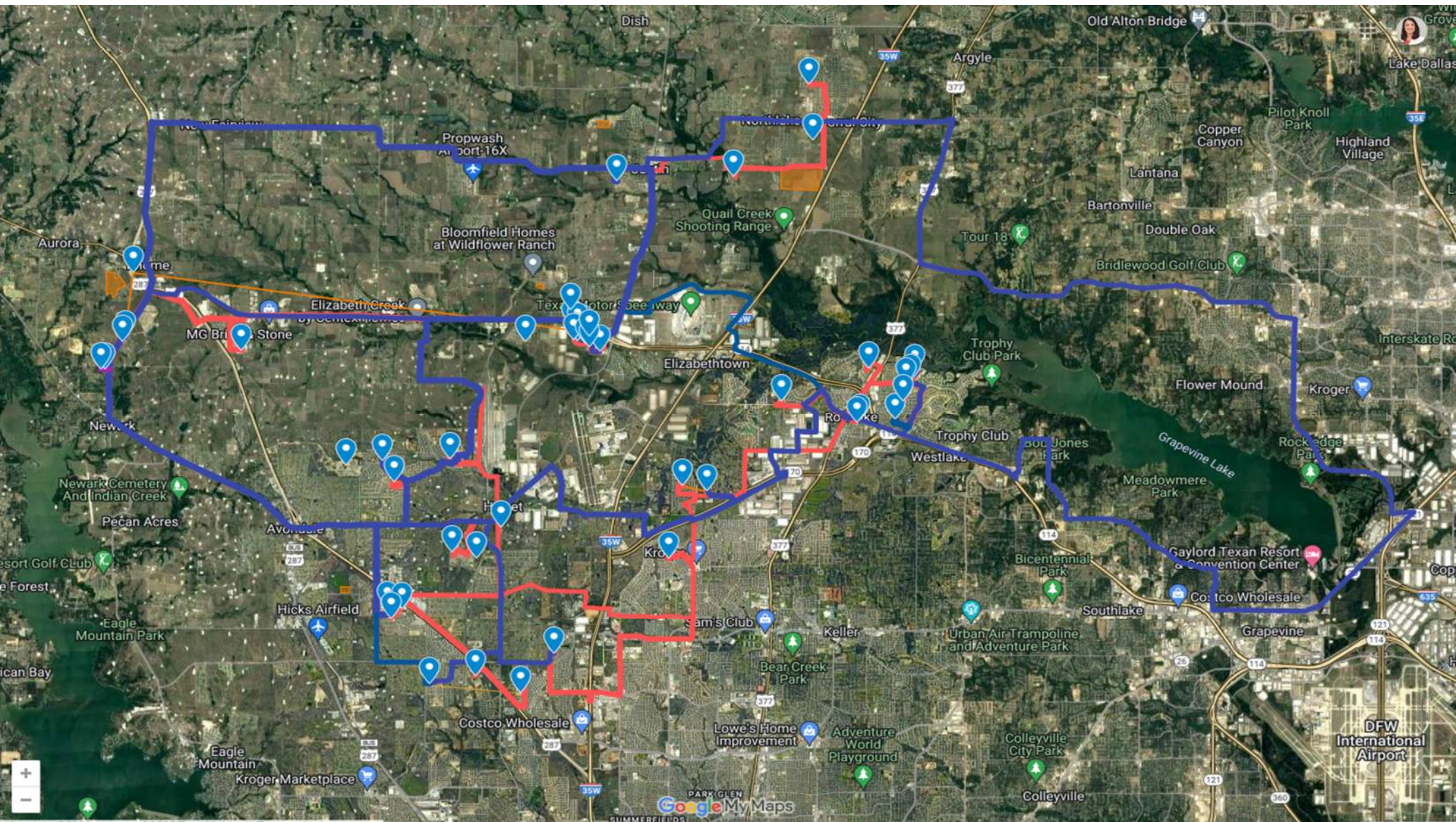
- Data Centers - Active/Active for Resiliency & Safety
- Resilient dark fiber network
- Cell boosters at all campuses
- Replaced campus core and edge switches
- Increasing bandwidth between campuses
- Texas Student Privacy Alliance

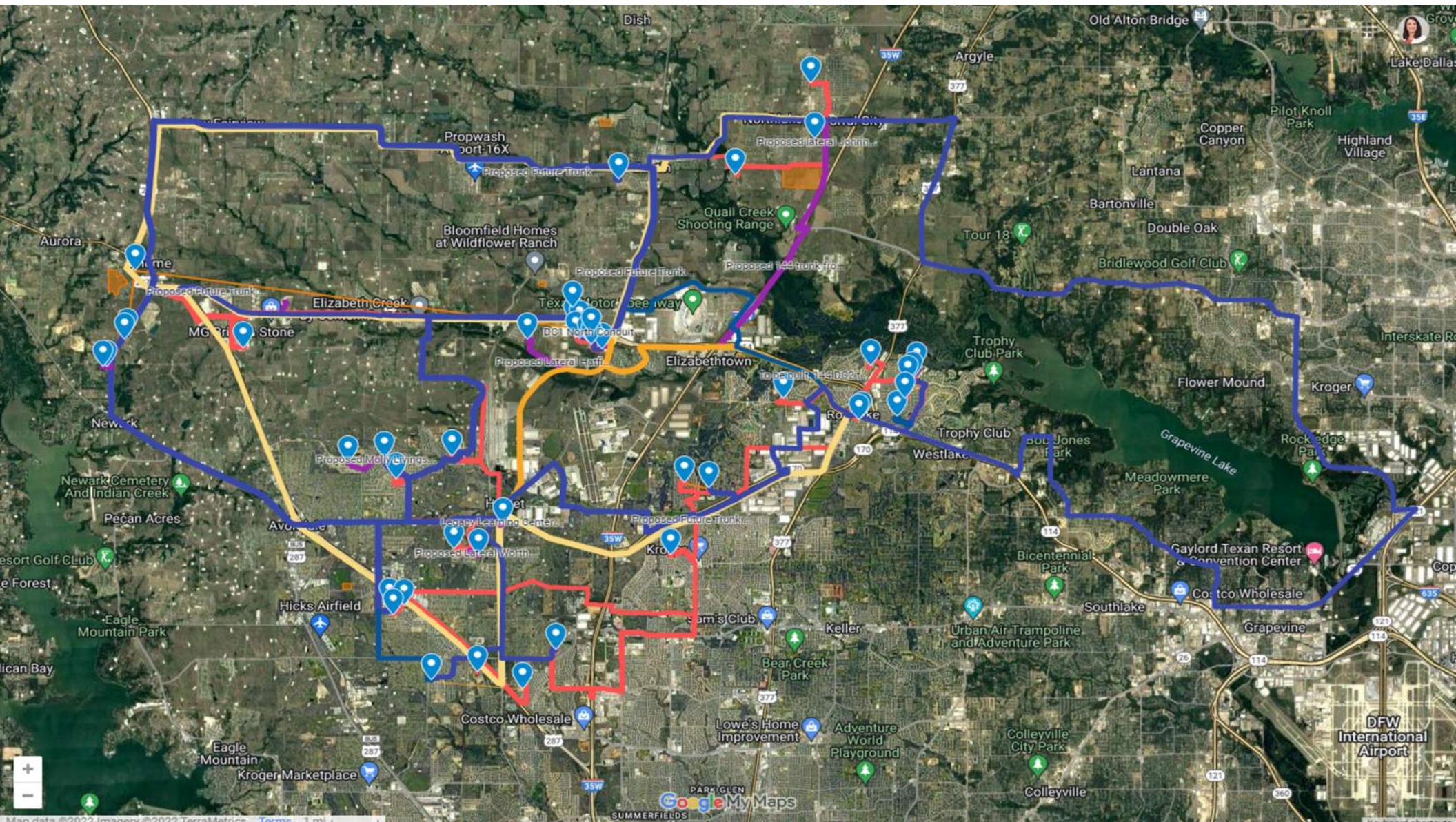












Technology Project Considerations

Potential Project	Location	Notes
Device refresh for teachers and students	Districtwide	Waterfall
Data center upgrades	2 locations (Admin & Steele)	Maintain equipment
Infrastructure refresh	Districtwide	Wireless, security firewall, switchgear, servers etc.
Informacast PA expansion and upgrade	Districtwide	HD clocks
Cybersecurity	Districtwide	Enterprise agreement, SEIM, firewall, monitoring & utilities
Phones	Districtwide	Enterprise agreement & hardware
Security camera growth, maintenance, and hardware	Districtwide	Upgraded feature set
Resilient fiber connectivity for future growth	Districtwide	
Access control growth and maintenance	Districtwide	

Pre-Kindergarten

Northwest ISD

Pre-Kindergarten Requirements

House Bill 3 (2019)

House Bill 3 requires that full-day prekindergarten be provided for all eligible four-year old students.

Exemptions are available until the 25-26 school year under these requirements.

- Add at least one full-day program each year.
- Adding full-day for every program would result in our ability to offer it to all eligible students.

Pre-Kindergarten Eligibility

Child must be at least four years of age on or before September 1 of the current school year and one of the following:

- unable to speak and comprehend the English language
- is educationally disadvantaged (eligible for the national school lunch program)
- is homeless
- is the child of active duty military
- is the child of the armed forces of the US that was injured or killed while serving
- is or ever has been in foster care
- is the child of someone eligible for the first responders STAR award

Timeline

	20-21	#	21-22		22-23		23-24		24-25	25-26
Full Day	1 English - PV 1 DL - PV 1 English - Love	6	1 English -PV 2 DL - PV 1 DL - Roanoke 1 English - Love 1 English - Justin	8	1 English - PV 2 DL - PV 2 DL - Roanoke 1 English- Love 1 English - Justin 1 English - Hughes	10	1 English - PV 2 DL - PV 2 DL - Roanoke 1 English- Love 1 English - Justin 1 English - Hughes 1 English - Nance 1 English - Seven Hills	12	1 English - PV 2 DL - PV 2 DL - Roanoke 1 English- Love 1 English - Justin 1 English - Hughes 1 English - Nance 1 English - Seven Hills 1 English - Peterson 1 English - Hatfield	All PreKindergarten Programs will be full day
Half Day	11 Campuses	24	12 Campuses Cox Berkshire	30	15 Campuses Sendera Ranch Lance (2nd classroom)	34	17 Campuses Granger Daniel Carter Curtis	30	15 Campuses Beck	
Total Programs	25	30		38		44		42	* We may need to add additional full day programs.	
Total Schools	13	16		20		23		24		

6 Year Historical Data

*started 21-22 with 370 students

School Year	Number of Campuses	Enrollment	Notes
2016-17	9	235	Tuition PreK was not offered at this time.
2017-18	10	299	First year for tuition and it was offered at 7 campuses. Added PK at Lakeview.
2018-19	12	360	Tuition at all 12 campuses. Added PK at Curtis and Haslet
2019-20	13	401	Tuition at all 13 campuses. Added PK to Lance Thompson
2020-21	14	359	15 actual programs, English and DL at PV full day, full day at Love (No tuition for full day programs) Added PK to Hatfield
2021-22	16	482*	18 programs
2022-23	17	560	21 programs

Total Enrollment

as of September 28, 2022

Campus	AM	PM		Total
Berkshire	17	17		34
Cox	17	12		29
Haslet	19	15		34
Hatfield	19	17		36
Lakeview	13	8		21
Lance	11	11		22
Lance	11	10		21
Lizzie Curtis	21	18		39
Peterson	20	19		39
Nance	16	17		33
Sendera	19	17		36
Seven Hills	16	13		29
Thompson	18	17		35
Hughes			21	21
Clara Love			20	20
Justin			15	15
Prairie View			20	20
Prairie View - DL			16	16
Prairie View - DL 2			16	16
Roanoke- DL			22	22
Roanoke- DL			22	22
	217	191	131	560

At capacity



ECSE

Early Childhood Special Education (ECSE) is a state and federally mandated program for young children with disabilities ages 3-5. Eligible children with disabilities, ages 3-5, are entitled to receive a free appropriate public education (FAPE) under the Individuals with Disabilities Education Act (IDEA) Part B, Section 619 in the least restrictive environment (LRE) in accordance with their individual needs. Children who meet eligibility criteria may receive Early Childhood Special Education services in a variety of settings such as a pre-kindergarten classroom, in the home, or in community settings such as Head Start and pre-school.

In Texas, services for eligible children with disabilities ages 3-5 are provided free of charge through the public-school system. Over 40,000 children in Texas receive individual special education services each year as a part of IDEA 619 Preschool.

ECSE

over 500 child find intakes this year

*2022-23 numbers do not reflect any summer or fall testing that is already underway

Concerns: moving to full day, space, staffing, ARD meetings, evaluations

Year	BOY	EOY	Intakes	ECSE from CF	Number of Units
2017-18			354	63	6
2018-19			400	65	8
2019-20	70	134	397	66	9
2020-21	54	133	436	55	10
2021-22	71	138	536	97	9
2022-23	135		200 as of 8/9/22	8	10

Tuition History

*TEA sets the tuition rates for half-day and full-day

Year	Total Tuition-based Students	Student Annual Cost	Total Revenue
2017-2018	34	\$3778.00	\$119,042.83
2018-2019	59	\$3778.00	\$228,663.80
2019-2020	84	\$3778.00	\$241,550.33 Refunded \$45,000.00 (closure) Total Revenue \$196,660.33
2020-2021	38	\$3,065.00	\$67,452.40 (7-1-2020 thru 2-4-21) Projected \$116,470.00
2021-2022	96	\$3,065.00	\$294,240.00
2022-2023	77	\$3002.00	\$231,154.00

Tuition

- Currently we only offer tuition for the half-day program
- Tuition rates
 - Half-day tuition = \$3002.00
 - Full day tuition = \$6004.00

30 (½ day) Tuition students pay for 1 (full day) PK Teacher and Para

30 (full day) Tuition students pay for 2 (full day) PK Teachers and Paras

Why Pre-Kindergarten

- Students who attend pre-K are three times more likely to be proficient readers by 3rd grade.
 - **Students who do not read proficiently by the end of 3rd grade are four times more likely to leave high school without a diploma.**
- Ninety percent of a child's brain is developed by the time they reach six years old. Pre-K stimulates their developing brains and builds their foundation.
- Pre-K students have increased vocabulary, literacy, critical thinking and problem-solving skills.

NISD Programs

Our half-day programs

- 53% of students “on track” for Kindergarten readiness
- 27% of our students should be monitored
- 20% of our students need support

Our full day programs

- 70% of students “on track” for Kindergarten readiness
- 19% of our students should be monitored
- 11% of our students need support

Challenges

- We do not offer full day programs at all campuses
- We do not offer tuition with full day programs
- Full day programs show greater gains than half day programs
- Space is limited
- Hard to predict PK numbers

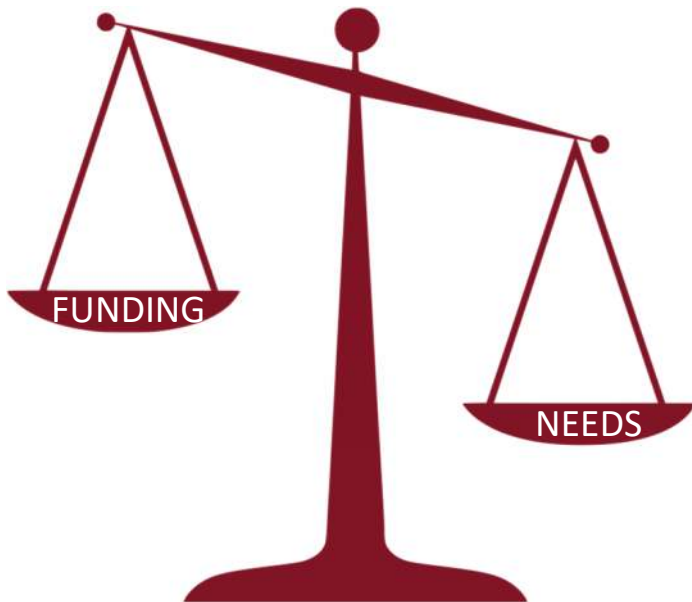
Considerations

- Early Learning Centers
 - 4 locations
 - Staff daycare
 - Serve more students because we also accept tuition-based students
 - Customize learning opportunities throughout the building
- Add additional classrooms to all locations to account for more PreK and ECSE students
 - Each campus would need a minimum of 4 additional classrooms (2 PK and 2 ECSE)

Weighting Factors & Grading Criteria



Project Prioritization



It is extremely common for school districts to have greater needs than what they can currently afford, making prioritizing potential projects an important and necessary step in the overall facility planning process.

Prioritization Framework

COMPREHENSIVE

Allows for a comprehensive evaluation of each project

CONSISTENT

Establishes a consistent series of factors to determine priorities

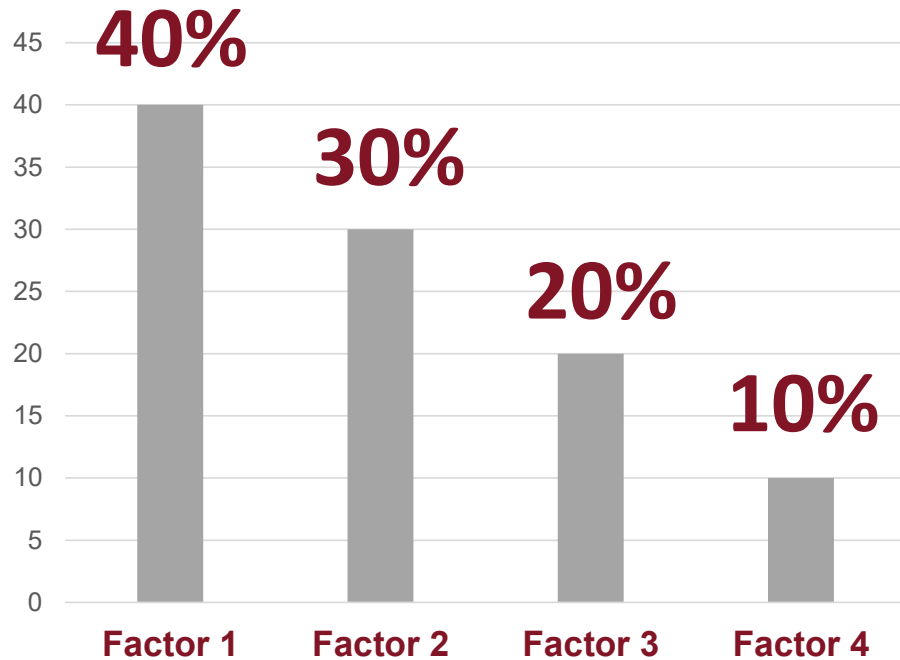
FAIR COMPARISON

Focuses the discussion on priorities even as each project is different

COMPLETE LOOK

Assists in considering the overarching priority all projects

Future Step: Rating Projects



In future meetings, as the committee works to evaluate needs and consider potential projects, we will evaluate projects by assigning a rating for each of the factors. The weight of the factor applied to the sum of the factor ratings will give each project a rating total. These totals will then allow for comparison and categorizing of the projects.

Future Step: Rating Projects

	Factor 1 40%	Factor 2 30%	Factor 3 20%	Factor 4 10%		
Project 1 Description	5	3	2	3		3.6
Project 2 Description	2	4	2	1		2.5
Project 3 Description	2	1	2	3		1.8
Project 4 Description	4	3	2	3		3.2

Future Step: Rating Projects

1		ETE	Bills Lab for Certifications in Health Science	5.0
2		ETE	Byron Nelson HS Ag Expansion, Culinary Expansion & Engineering Lab	5.0
3		SAFETY & SECURITY	Entrance & Reception Area Improvements - approach camera, buzzer and video, uniform platform, reception area security enhancements	5.0
4	C	SAFETY & SECURITY	Renovating Elementary Campuses	5.0
5		TECHNOLOGY	Technology Infrastructure & District Backbone - cabling, WiFi, equipment closets, network operations	5.0
6		DEFICIENCIES	Roof Replacement & Repairs	5.0
7		DEFICIENCIES	Code Compliance (ADA Items)	5.0
8		DEFICIENCIES	Replacement of Age Electrical, Mechanical & Plumbing Equipment	5.0
9		DEFICIENCIES	Replace Age of Fire Alarms	5.0
10		DEFICIENCIES	Water Intrusion & Damage (incl. window replacement, caulking, sealing, etc.)	5.0
11		ETE	Technology & Infrastructure Upgrades for Labs	4.9
12		SAFETY & SECURITY	Door Hardware Upgrades - with intruder function	4.9
13		ETE	Northwest HS AMAT Upgrade & Ag Expansion	4.9
14		ETE	Computer Certification Labs	4.8
15		ETE	Ag Barn Expansion, New Addition & Upgrades	4.8
16	C	ETE	Upgrade STEM at NWS	4.8
17		SAFETY & SECURITY	Access Control Improvements & Intrusion Alarms - Automated lockdown with agency notification	4.8
18		TECHNOLOGY	Student Device Refresh	4.8
19		SAFETY & SECURITY	Security Cameras - additional coverage and replacements	4.8
20	C	SAFETY & SECURITY	Updated Exterior Lighting	4.8
21		SAFETY & SECURITY	Intercom System & Phone System Improvements	4.7
22	C	DISTRICT WIDE	Additional Pre-K Classrooms	4.6
23		TECHNOLOGY	Teacher & Staff Device Refresh	4.6
24		TECHNOLOGY	Virtual Desktop Infrastructure Growth	4.6
25		ATHLETICS	Second District Stadium	4.5
26	C	DEFICIENCIES	Innovations/Aesthetic Upgrades to Campuses 25+ Years	4.5
27		FINE ARTS	BNWS & NWS Fine Arts Improvements - new large ensemble and practice rooms and new dance studio (BNWS), update lighting in PAC & Black Box	4.5
28		TECHNOLOGY	Classroom Display Upgrades	4.4
29	C	FINE ARTS	Wilde School Fine Arts Improvements - Update stage areas, new large ensemble, practice and theater rooms, band and choir room updates	4.4
30		FINE ARTS	District Performing Arts Center	4.3
31		DEFICIENCIES	Replacement of Age of Kitchen Equipment	4.3
32		DEFICIENCIES	Driveway, Curb, and Paving Repair	4.2
33	C	DISTRICT WIDE	District Wide Collaborative Areas	4.2
34		ATHLETICS	Outdoor Fieldhouse at BNWS & NWS	4.2
35		DEFICIENCIES	Replace Age of Flooring	4.0
36		ATHLETICS	NISD Special Events Center	4.0
37		ATHLETICS	District Aquatic Center	4.0
38		FINE ARTS	Renovate Northeast HS PAC	3.6
39		FINE ARTS	Upgrade Elementary Stage Sound System	3.6
40	C	TECHNOLOGY	Tracking/Charging Stations for NISD Devices	3.6
41	C	FINE ARTS	Art Class Space & Furniture	3.5
42	C	DISTRICT WIDE	District Wide Classroom Furniture Refresh	3.5
43		ATHLETICS	Fixation Stadium Bleachers and Press Box Replacement	3.4
44		FINE ARTS	Uniforms for Band, Drill Team & Cheer (3 yr. cycle)	3.2
45	C	ATHLETICS	Ticket Booths	3.1
46		TECHNOLOGY	Any WiFi - Anytime anywhere access	2.4

Ranking

Hot Dots Activity

Review the handout.

Determine your priorities.

During the tour find the posters and place your dots on the priorities that are most important to you.

Use the key on the handout.

Red dot = Top Priority

Green dot = High Priority

Yellow dot = Very Important

Blue dot = Important

Use all your dots. There will be more factors than you have dots. Choose wisely!

LONG RANGE PLANNING COMMITTEE

LET'S PRIORITIZE PROJECTS THAT...

- The majority of our community will support.
- Create opportunities for students to compete for college, full-time employment after high school, or the global workforce.
- Contribute to our community's economic development.
- Reduce maintenance costs by replacing items on a projected life cycle.
- Provide similar academic or extracurricular offerings to that of surrounding districts.
- Position our district to compete with charter schools, private schools, and/or surrounding districts.
- Contribute to a culture of inclusion.
- Help students succeed in an ever-changing world.
- Achieve greater sustainability or efficiency, resulting in a cost savings over its lifetime.
- Generate an optimal return on investment.
- Have a sensible lifecycle compared to the scheduled repayment of the bond.
- Align with our community's principles and beliefs.
- Allow for future flexibility. (Can it be repurposed for future?)
- The overall community will be able to support given the investment required.
- Are needed now or in the immediate future.
- Provide space for a program that delivers services to the community.
- Satisfy required building codes, disability, or safety standards.
- Support a program(s) that will produce revenue.
- Make the learning environment safer or more comfortable for students (i.e., climate control, protection from elements, innovation, technology).
- Attract new business and families.
- Align with our community's philosophy on education or other programs.
- Alleviate a security concern or condition that's disruptive to student learning.
- Provide new opportunities for students.
- Address a condition that is draining resources from the M&O fund.
- Alleviate overcrowding and provide space for a growing campus or program.
- Create a space or facility that can serve dual purposes.
- Will inspire students and staff.
- Provide a space for community use for special events and activities.
- Create equity among the program offerings and learning environments in campuses across the district.
- Advance the student learning experience and/or help meet instructional needs for today's classroom.
- Help our district attract and retain the best teachers for our students.
- Impact a large number of students.

#1 **#2** **#3** **#4**

1 = top priority
2 = high priority
3 = very important
4 = important

Tour

Justin Elementary



Justin Elementary

- QUICK FACTS
- Year Built
- Renovations/Remodels
- Capacity/Enrollment

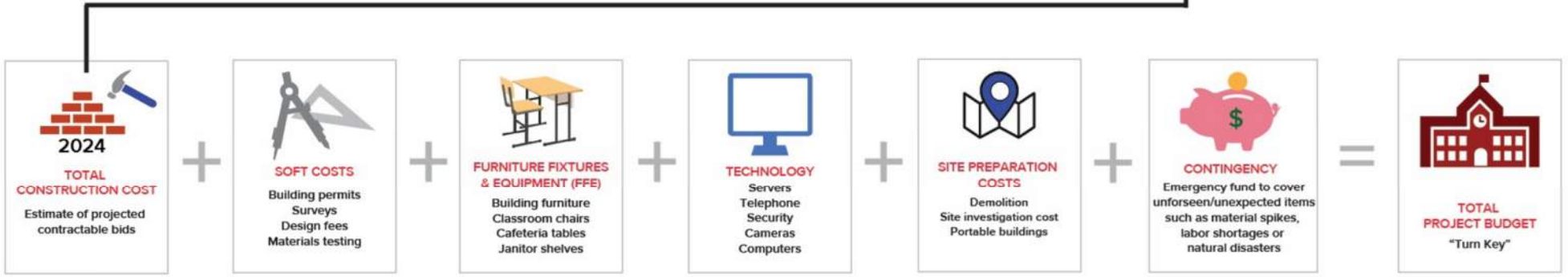


Construction Cost Forecasting

Panel Discussion



Building a Bond Budget



Construction Cost Forecasting

Panel Discussion



Small Group Discussion

Guiding Questions:

1. What were your top 3 takeaways from the panel?
2. What questions will NISD Stakeholders have about the impact of inflation on bond planning?
3. What are the best ways for NISD to address questions and concerns from taxpayers?

Committee Transparency

NORTHWEST ISD
LONG RANGE
PLANNING COMMITTEE

HOME COMMITTEE MEETINGS RESOURCES QUESTIONS

NISD Long Range Planning Committee

As one of the fastest growing school districts in the state that attracts more than 1,400 new students each year, we must continually evaluate our facilities and support systems to determine if our learning environments, equipment and infrastructure are equipped to best support the future of our growing student population.

To assist us in this effort, we rely on input from members of the NISD Long Range Planning Committee (LRPC). The LRPC helps us study and prioritize the facility needs of the school district and assists us in providing recommendations to the Northwest ISD Board of Trustees on possible future building projects.

This website has been created to keep our community informed on the progress of the committee and the facility planning process that led to the 2017 bond election.

THE LRPC IS INVALUABLE TO THE PLANNING PROCESS BECAUSE IT ALLOWS THE DISTRICT TO HEAR FROM AND INCORPORATE MANY DIFFERENT PERSPECTIVES FROM PEOPLE IN THE COMMUNITY.

MEETINGS
The LRPC will meet at least six times in 2019-2020 before making its recommendation to the Board of Trustees.

RESOURCES
A variety of resources, from administrative liaisons to helpful documents, are available to the LRPC.

QUESTIONS
Citizens can submit their own questions or view a list of Frequently Asked Questions.

[View Meeting Details](#) [See Resources](#) [Submit a Question](#)

NORTHWEST ISD
LONG RANGE
PLANNING COMMITTEE

HOME COMMITTEE MEETINGS RESOURCES QUESTIONS

Meetings

LRPC Meetings

MEETING #1 - TUESDAY, OCTOBER 8, 2019
6:00 p.m.
NISD Administration Building
Board Room

[Agenda](#) [Presentation](#) [Meeting Notes](#)

Committee Schedule

	Date	Location
Meeting 1	Tuesday, September 6	Legacy Learning Center
Meeting 2	Tuesday, September 20	Berkshire Elementary School
Meeting 3	Tuesday, October 4	Justin Elementary School
Meeting 4	Tuesday, October 18	Chisholm Trail Middle School
Meeting 5	Tuesday, November 8	Adams Middle School
Meeting 6	Tuesday, November 29	Eaton High School
Meeting 7	Tuesday, December 13	Northwest High School
Meeting 8	Tuesday, January 10	Legacy Learning Center
Recommendation	Monday, January 23	Administration Building
Board Meeting	Monday, February 13	Administration Building