




NORTHWEST ISD
**LONG RANGE
PLANNING**
COMMITTEE

Meeting #8
January 10, 2023





DR. MARK FOUST
SUPERINTENDENT OF SCHOOLS

Tonight's Agenda

1. Review Meeting 7
2. Preview Project Groupings and Costs
3. Finalize Projects
4. Vote on Recommendation
5. Discuss Next Steps and Messaging
6. Wrap Up



NORTHWEST ISD SURVEY

November 29 – December 1, 2022

N = 400 respondents

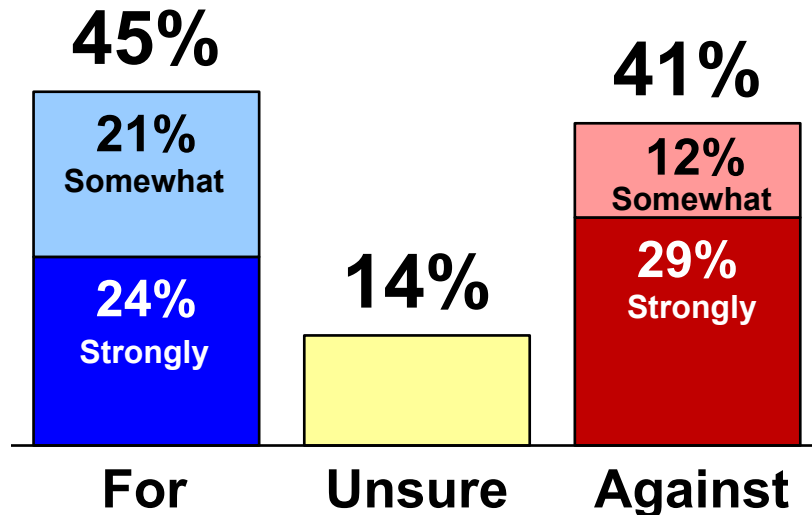
margin of error: \pm 4.9%

GENERAL BOND

INITIAL BALLOT

Q3. Would you vote for or against the issuance of (**Ver X:** \$1.2 billion / **Ver Y:** \$1.7 billion) in bonds for school facilities, and the purchase of (**Ver P:** land and buses / **Ver Q:** land, buses, and vehicles), which is a property tax increase?

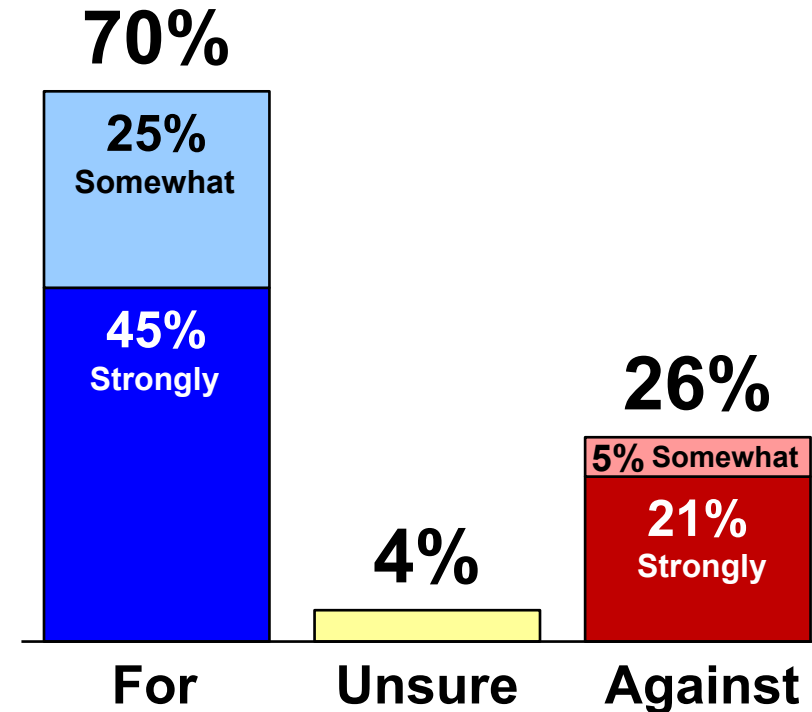
For		Agn
48%	\$1.2B	38%
42%	\$1.7B	44%



INFORMED BALLOT

Q31. Having heard more about it, would you vote for or against the issuance of (**Ver X:** \$1.2 billion / **Ver Y:** \$1.7 billion) in bonds for school facilities, and the purchase of (**Ver P:** land and buses / **Ver Q:** land, buses, and vehicles), which is a property tax increase?

For		Ang
74%	\$1.2B	19%
66%	\$1.7B	32%



BOND PROJECTS AND ELEMENTS

Now I am going to read you some projects that would be included in a potential bond package for Northwest ISD. For each item I read, please tell me if you strongly favor, somewhat favor, somewhat oppose or strongly oppose that project.		Total Favor	Total Oppose	Depends / Unsure
Q11	Northwest ISD expects to add over 6,600 students over the next three years, enough to fill a new high school, a new middle school, and three new elementary schools. This bond will allow the district to construct several new schools needed for growth including the district's fourth High School.	77%	19%	4%
Q12	Northwest ISD ranks first in the DFW area for new homes, with 4,500 new homes sold last year, and there are 30,000 future residential lots platted across the district. With families continuing to move into the area, this bond allows the district to plan ahead to help alleviate overcrowding.	74%	21%	5%
Q13	Northwest ISD has been one of the fastest growing districts in the state and has been able to manage growth through a series of strategic bond proposals. This bond is the next step to (Ver P: keep up with growth / Ver Q: ensure every child has a seat in the classroom).	74%	20%	6%
Q14	The district recently tripled the number of portables to accommodate many schools that are over capacity, and more portables will be needed to address growth if no new schools are built. This bond would reduce the reliance on portables.	74%	20%	6%
Q15	One element would allow for renovations to older campuses to bring the learning environment to the district's newest standards, including flexible collaboration spaces for students to work in groups and have more hands-on learning.	77%	18%	5%
Q16	This bond would allow for maintenance and repair of school buildings such as upgraded H-VAC, roofing, electrical, plumbing, security cameras, and other security infrastructure to keep schools safe and in good condition as they age.	82%	14%	4%
Q17	This bond could allow for relocating the transportation facility to a more efficient place on the central campus site to provide buses with their own access in order to improve traffic flow for parents, students and staff entering and exiting Texan Drive.	74%	21%	5%
Q18	The bond will allow for the purchase of additional buses to cover new routes and accommodate a growing number of students.	79%	17%	4%
Q19	This bond would allow for construction of a second Ag Barn that will meet the needs of a growing program, allow more students to participate and lessen drive time for students.	74%	21%	4%
Q20	The bond would allow for improvements for fine arts programs at older campuses such as upgrades to stages and other spaces and equipment for art, music, and theater programs (Ver X: bringing them to a similar standard as newer schools in the district / Ver Y: ensuring comparable facilities and programs for students across the district).	77%	20%	4%
Q21	The district's high schools have outgrown their main gyms, baseball and softball fields, as there is not enough spectator seating for schools their size. The bond could allow for expansion of spectator seating at these facilities to be more appropriate for 6A high schools.	62%	34%	4%
Q22	The district now serves over 4,000 more high school students today than it did 10 years ago and certain fine arts spaces and athletic facilities are now undersized. The bond could provide for appropriate spaces for fine arts and athletics consistent with what other peer districts of similar size have.	68%	27%	4%
Q23	The bond could allow for improvements to CTE spaces at some campuses to create equity in program offerings for all district high schools.	66%	25%	10%

CONCLUSIONS

1

NISD has a 75% positive, 10% negative image rating, including a 45% strong positive rating, a positive indicator heading into a bond election.

2

Two-thirds of respondents (67%) indicate they are more likely to support bonds knowing NISD can finance \$1.5B - \$2B with a rate increase of one-tenth of a penny. Respondents are split on a low-end bond package of \$1.5B vs high-end package of \$2B, while 33% are opposed to all amounts tested (\$2B - \$1.5B).

3

Initial ballot extrapolated “for” percentages are as follows:
49% General Prop, 63% Tech Prop, 50% Fine Arts Prop, 37% Event Center Prop, 40% Stadium Prop.

4

Informed ballot extrapolated “for” percentages are as follows:
71% General Prop, 76% Tech Prop, 67% Fine Arts Prop, and 55% Event Center Prop. In a preference question, 65% support stadiums (40% at each HS and 25% at a shared site).

5

The elements that correlate most with support of the general bond are found in Q11, Q13, Q16, Q25, Q27.

TOP FIVE BOND MESSAGES

Total Sample		Parents		Non-Parents	
Q11	Northwest ISD expects to add over 6,600 students over the next three years, enough to fill a new high school, a new middle school, and three new elementary schools. This bond will allow the district to construct several new schools needed for growth including the district's fourth High School.	Q11	Northwest ISD expects to add over 6,600 students over the next three years, enough to fill a new high school, a new middle school, and three new elementary schools. This bond will allow the district to construct several new schools needed for growth including the district's fourth High School.	Q12	Northwest ISD ranks first in the DFW area for new homes, with 4,500 new homes sold last year, and there are 30,000 future residential lots platted across the district. With families continuing to move into the area, this bond allows the district to plan ahead to help alleviate overcrowding.
Q13	Northwest ISD has been one of the fastest growing districts in the state and has been able to manage growth through a series of strategic bond proposals. This bond is the next step to (Ver P: keep up with growth / Ver Q: ensure every child has a seat in the classroom).	Q16	This bond would allow for maintenance and repair of school buildings such as upgraded H-VAC, roofing, electrical, plumbing, security cameras, and other security infrastructure to keep schools safe and in good condition as they age.	Q25	Because of the rapid growth and rising property values, the district can finance this bond with one-tenth of one cent, which (Ver X: means the annual increase in property taxes for the average home will be less than the cost of a gallon of gas / Ver Y: equates to an additional 37.5 cents in property taxes per month for the average home).
Q16	This bond would allow for maintenance and repair of school buildings such as upgraded H-VAC, roofing, electrical, plumbing, security cameras, and other security infrastructure to keep schools safe and in good condition as they age.	Q13	Northwest ISD has been one of the fastest growing districts in the state and has been able to manage growth through a series of strategic bond proposals. This bond is the next step to (Ver P: keep up with growth / Ver Q: ensure every child has a seat in the classroom).	Q15	One element would allow for renovations to older campuses to bring the learning environment to the district's newest standards, including flexible collaboration spaces for students to work in groups and have more hands-on learning.
Q25	Because of the rapid growth and rising property values, the district can finance this bond with one-tenth of one cent, which (Ver X: means the annual increase in property taxes for the average home will be less than the cost of a gallon of gas / Ver Y: equates to an additional 37.5 cents in property taxes per month for the average home).	Q15	One element would allow for renovations to older campuses to bring the learning environment to the district's newest standards, including flexible collaboration spaces for students to work in groups and have more hands-on learning.	Q18	The bond will allow for the purchase of additional buses to cover new routes and accommodate a growing number of students.
Q27	The district's overall tax rate is the lowest it has been since 1993. Even if all bonds pass, it will still be at a 20-year low.	Q18	The bond will allow for the purchase of additional buses to cover new routes and accommodate a growing number of students.	Q16	This bond would allow for maintenance and repair of school buildings such as upgraded H-VAC, roofing, electrical, plumbing, security cameras, and other security infrastructure to keep schools safe and in good condition as they age.

Messaging

Throughout our discussion, consider and respond to the following prompts.

What will bond supporters say about the proposal?	What will opposition say about the proposal?
What questions will voters have about the proposal?	What myths or inaccuracies may emerge about the proposal?

PROJECT	PROJECT RATING TOTAL (WEIGHTED VALUE)
Elementary School No. 23	5
Elementary School No. 24	5
Elementary School No. 25	5
Elementary School No. 26	5
Elementary School No. 27	5
Elementary School No. 28	5
Replacement: 25 #1 (Justin Elementary)	5
Replacement: 25 #2 (Prairie View)	5
Middle School No. 8	5
Middle School No. 9	5
Comprehensive High School No. 4	5
Comprehensive High School No. 5 - Design Fees	5
Early Childhood Facility	5
Nance Addition	5
New Agriculture Center	5
Land Acquisition	5
Competition/Home Stadiums at each HS Campus	5
Change HS Cafeterias: Cador, Byron, Northwest	4.95
Grade F (2023) HVAC work, Indoor Air Quality, Building Envelope, Building Automation	4.93
2025 Technology Priority 1 items: Network Infrastructure	4.88
2025 Technology Priority 1 items: Communications and Systems	4.88
Safety and Security Items: Cameras, Radios, Security Devices	4.85
Safety and Security Items: Cybersecurity	4.85
New Technology Devices	4.83
Fire Alarm Replacement: Justin, Prairie View, NISD Stadium, Texas Field	4.80
Buses for growth	4.77
2025 Technology Priority 1 items: Audio Visual and Monitors	4.77
Change Competition Gyms: Byron, Cador	4.65
Security upgrades for existing Classrooms: Byron, Cador, Northwest, Acorn	4.62

PROJECT	PROJECT RATING TOTAL (WEIGHTED VALUE)
ES Capital Items: Beck, Cox, Granger, Hughes, Lakeview, Love, Nance, Peterson, Roanoke, Schuler, Sencera, JC Thompson	4.55
Grade D (2024) HVAC work, Indoor Air Quality, Building Envelope, Building Automation	4.48
Stadium LED Lighting (NISD & Track)	4.47
Educational Events Center: Multi-purpose space for large gatherings, 8,000 seats, Graduations, special events, CTE and athletic competitions	4.40
Building Addition at HS PACs: Additional Seating at Byron, Cador, Northwest	4.37
Texas Field (NISD Track and Field Complex): Replace home and visitor coaches, pressbox, concessions, ticket booth, restrooms, New Locker, booth, 2nd entrance, Add two shot put, and two discus Resurface track, replace turf, new fencing, site improvements, Old Field House - Renovation	4.35
Tool Replacement (Through 2029): Nance, Lakeview, Cador, Medlin, NIS AC, Ag Barr, Granger, Peterson, Sencera Ranch	4.35
Acc bottle fillers at existing campuses	4.30
Grade F (2023) Transformer Replacement	4.25
Grade F (2023) Water Conservation/Irrigation Upgrades	4.18
Turf Replacement: Wilson MS - Turf and Track Replacement, NIS Sub JV Field Turf Replacement	4.15
Steel EHS Renovation	4.12
Replace Seating System on stages: Beck, Peterson, Love, Lakeview, Cox, Roanoke, Granger, Hughes, Schuler, JC Thompson, Curtis, Nance	4.10
NISD Stadium Replacement Flooring	4.10
Additional Coaches: BNHS - Sub Varsity Basketball, Softball; EHS - Sub Varsity Basketball, Softball; CTMS Additional Coaches	4.10
West Operations Facility modifications: Bus lifts, WiFi	4.07
CTC Improvements and Renovations: N-HS - Replace Greenhouse, E-HS - Greenhouse maintenance, BNHS - Expand existing shop	4.02
NISD Stadium Roof Replacement	3.98
Call center and BDA	3.96
CTMS Exterior Athletics Concession stand	3.90
Central Water Plant	3.85
Steel Fire Arts items: Kitchen and Kitchen room, Replace stage rigging, sound, lighting	3.83
Grade D (2024) Transformer Replacement	3.83
Geothermal - HVAC Replacement: Byron	3.82
Athletics Improvements and Renovations: Beck - Basketball Goals in existing gym	3.82
Grade D (2024) Water Conservation/Irrigation Upgrades	3.80
BNIS PAC Improvements and Renovations: Replace stage and house lighting, A/V System, flooring, paint, acoustic panels	3.78
BNHS - Art room renovations	3.73

PROJECT	PROJECT RATING TOTAL (WEIGHTED VALUE)
Middle School FCS Kitchen Upgrades: Tidwell, Wilson	3.73
Replace aged flooring: Cador, Eaton, Cox, Tidwell, Beck, Hughes, Sencera Ranch, JC Thompson, Nance, Wilson, Acorn, Byron, Nance or, Sencera	3.72
Student HS Band Practice Areas for Terrellton (BNHS, EHS, Northwest)	3.70
Grade C (2026) HVAC work, Indoor Air Quality, Building Envelope, Building Automation	3.70
Furniture - ES Classrooms: Beck, Cox, Granger, Hughes, Lakeview, Love, Nance, Peterson, Roanoke, Schuler, Sencera, JC Thompson	3.67
Furniture - MS Classroom: Medlin, Cador, Tidwell, Wilson	3.67
Change Byron Nelson Wrestling Room	3.65
Countywide resurfacing: Cox, Granger, Love, Peterson, Roanoke, Schuler, Wilson, Egan, Byron	3.62
District Performing Arts Center	3.60
Replace aged flooring: Hard floors: Nance, Granger, Peterson, Sencera Ranch, Ag Barr	3.55
Athletic LED Lighting (from stadium): NIS, BNIS, Cador - Athletic LED Lighting, Tidwell - Tennis Courts LED Lighting	3.55
Furniture - Libraries: Beck, Cox, Granger, Hughes, Lakeview, Love, Nance, Peterson, Roanoke, Schuler, Sencera, JC Thompson, Cador, Medlin, Tidwell, Wilson, Byron, Egan	3.55
Relocate Central Transportation Pad by Upgrade Maintenance Equipment, Add Fencing, Add Parking, Site Lighting, Bus Wash	3.52
Furniture - CTE Computer Labs	3.52
Convert to LED Lighting: Lakeview, Roanoke, Beck, Cador, Love, Schuler, Sencera Ranch, Peterson, Granger, Hughes, Cox, JC Thompson, Nance, Medlin, Cador, Medlin Trail, Wilson, Pike, Tidwell, Byron, Nance, Eaton, Sencera, Ag Center	3.38
Cover Balling Cages: Cador, Byron, Northwest	3.37
HS Team Booths: Byron, Eaton	3.35
District Warehouse modifications: Add elevator, HVAC, Upgrade sprinkler system, Pave full parking lot, Add fencing	3.27
Grade C (2026) Water Conservation/Irrigation Upgrades	3.03
Grade C (2026) Transformer Replacement	2.95
Convert Hillfield ES to Administration	2.93
New Maintenance Building	2.87
Central Admin Renovation and Addition: Existing Renovation, Demolition and new work, Site improvements, Include new power feed, New roof, flooring, new HVAC	2.76
Grade B (2028) HVAC work, Indoor Air Quality, Building Envelope, Building Automation	2.75
Tie corridor walls at existing campuses: Cador, Medlin, Tidwell, Wilson	2.73
Additional Campus Parking at Curtis, Legacy Learning	2.40
Elementary Equity: Open Flow Library: Beck, Cox, Granger, Hughes, Lakeview, Love, Nance, Peterson, Roanoke, Schuler, Sencera, JC Thompson	2.28
Grade B (2028) Water Conservation/Irrigation Upgrades	2.18
Grade B (2028) Transformer Replacement	2.07

Build-A-Bond

Growth Projects: New Facilities + Land

#	PROJECT		COST
2	New Agriculture Center	GROW	\$42,480,000
3	Elementary School No. 23	GROW	\$54,826,206
4	Elementary School No. 24	GROW	\$63,662,632
5	Elementary School No. 25	GROW	\$63,662,632
6	Elementary School No. 26	GROW	\$69,269,126
7	Elementary School No. 27	GROW	\$71,385,831
8	Elementary School No. 28	GROW	\$77,718,753
9	Replace		
10	Replace		
11	Middle S		
12	Middle S		
13	Compre		
14	Compre		

Growth Projects: New Facilities + Land

#	PROJECT		COST
15	Early Childhood Facility	GROW	\$166,068,116
16	Nance Addition	GROW	\$16,104,990
17	Land Acquisition	GROW	\$50,000,000
18	Enlarge HS Cafeterias <i>Eaton, Byron, Northwest</i>	GROW	\$30,723,163
27	Buses for growth	GROW	\$16,723,876
34	Building Addition at HS PACs <i>Additional Seating at Byron, Eaton, Northwest</i>	GROW	\$26,415,577
42	Additional Bleachers <i>BNHS - Sub Varsity, Baseball, Softball</i> <i>EHS - Sub Varsity, Baseball, Softball</i> <i>CTMS Additional Bleachers</i>	GROW	\$6,120,657
50	Central Master Plan	GROW	\$11,720,154
66	District Performing Arts Center	GROW	\$292,298,348
70	Relocate Central Transportation Facility <i>Upgrade Maintenance Equipment, Add Fencing, Add Parking, Site Lighting, Bus Wash</i>	GROW	\$25,354,621
78	Convert Hatfield ES to Admin space	GROW	\$42,503,288
79	New Maintenance Building	GROW	\$19,964,860
80	Central Admin Renovation and Addition <i>Existing Renovation, Demolition and new work, Site improvements</i> <i>Include new power feed, New roof, all flooring, new HVAC</i>	GROW	\$51,023,678

Capital Improvement Projects

#	PROJECT		COST
19	Grade F (2023) HVAC work, Indoor Air Quality, Building Envelope, Building Automation	CAP IMP	\$64,629,000
25	Fire Alarm Replacement <i>Ag Center, NISD Stadium, Texan Field, West Operations Facility</i>	CAP IMP	\$274,537
31	Grade D (2024) HVAC work, Indoor Air Quality, Building Envelope, Building Automation	CAP IMP	\$15,908,833
32	Stadium LED Lighting (NISD & Track)	CAP IMP	\$1,777,585
33	Educational Event Center <i>Multipurpose space for large gatherings, 8,000 seats</i> <i>Graduations, special events, CTE and athletic competitions</i>	CAP IMP	\$442,544,700
36	Roof Replacement (Through 2029) <i>Nance, Lakeview, Chisholm, Medlin, NHS IAC, Ag Barn, Granger, Peterson, Sendera Ranch</i>	CAP IMP	\$38,062,994
37	Add bottle fillers at existing campuses	CAP IMP	\$845,681
38	Grade F (2023) Transformer Replacement	CAP IMP	\$1,724,432
39	Grade F (2023) Water Conservation/Irrigation Upgrades	CAP IMP	\$639,592
40	Turf R		
41	Wilson		
41	Steele		
43	Repla		
43	Beck,		
43	Curtis		
44	NISD		
45	West		
45	Bus li		
47	NISD		

Equity/Evolving Needs Projects

#	PROJECT		COST
30	ES Choral Risers <i>Beck, Cox, Granger, Hughes, Lakeview, Love, Nance, Peterson, Roanoke, Schluter, Sendera, JC Thompson</i>	EQ/EV	\$429,130
52	Steele Fine Arts Items <i>Kiln and Kiln room, Replace stage rigging, sound, lighting</i>	EQ/EV	\$341,766
56	BNHS PAC Improvements and Renovations <i>Replace stage and house lighting, AV System, flooring, paint, acoustic panels</i>	EQ/EV	\$3,062,347
58	BNHS - Art room renovations	EQ/EV	\$342,219
62	Furniture - ES Classroom <i>Beck, Cox, Granger, Hughes, Lakeview, Love, Nance, Peterson, Roanoke, Schluter, Sendera, JC Thompson</i>	EQ/EV	\$29,726,868
63	Furniture - MS Classroom <i>Medlin, Chisholm, Tidwell, Wilson</i>	EQ/EV	\$16,023,671
64	Enlarge Byron Nelson Wrestling Room	EQ/EV	\$297,272
69	Furniture - Libraries <i>Beck, Cox, Granger, Hughes, Lakeview, Love, Nance, Peterson, Roanoke, Schluter, Sendera, JC Thompson</i>	EQ/EV	\$7,899,670
71	Furniture - CTE Computer Labs	EQ/EV	\$1,175,069
74	HS Paint Booths <i>Byron, Eaton</i>	EQ/EV	\$625,377
84	Elementary Equity - Open Flow Library <i>Beck, Cox, Granger, Hughes, Lakeview, Love, Nance, Peterson, Roanoke, Schluter, Sendera, JC Thompson</i>	EQ/EV	\$13,701,959

Total Bond Package

Review & Discuss

Tim McClure



Build-A-Bond

CONSIDERED	INCLUDED <i>December 13</i>	NOT INCLUDED
82 Projects	47 Projects	35 Projects
\$3,353,786,575	\$ 2,067,342,735	\$1,286,443,840

Included

8 Schools + 4 Early Childhood Centers

Home Stadiums

Texan Field (NISD Track and Field Complex)

Replacement, Maintenance or Repairs to HVAC, Roofing,
Flooring, Electrical

Central Campus Master Plan

Safety and Security

Technology

Not Included

Two Elementary Schools*

One Middle School*

Design Fees for Next High School*

Educational Event Center

Performing Arts Center

Maintenance and Repairs that are not immediately needed*

*Will be needed/considered in future bonds.

Other Projects

#56 Beck - Basketball Goals in existing gym

#60 BNHS Art Room Renovations

#62 Extend HS Band Practice Areas for Percussion (BNHS, EHS, Northwest)

#66 Enlarge BNHS Wrestling Room

The projects above will be accomplished with as in-house projects.

#81 New Maintenance Building (to be combined with Administration/Old Hatfield additions and renovations)

Needs Further Consideration

#38 Roof Replacement (through 2029)

#57 Grade D (2024) Water Conservation

#61 Replace aged flooring (carpet)

#63 Grade C (2026) HVAC, IAQ, Building Envelope, Building Automation

#64 Furniture - ES Classroom

#64 Furniture - MS Classroom

#74 Convert to LED Lighting

#78 Grade C (2026) Water Conservation/Irrigation Upgrades

#85 Additional Campus Parking at Curtis, Legacy Learning

NOTE: Project Costs & Project Categories

All costs shown are Opinions of Probable Costs and could change based on scope, materials, timing, etc.

Projects are currently listed in categories that reflect how they were presented to the LRPC. These categorical listings could change once a bond election is called and projects are communicated to the community. For example, fire alarm panels could be communicated as safety & security (instead of capital improvements) during the district's informational campaign.

Projects by Category

Equity/Evolving Needs	\$3,062,347	0.15%
Safety	\$29,584,650	1.43%
Co-Curricular	\$42,013,923	2.03%
Technology	\$57,189,711	2.77%
Capital Improvements	\$151,617,445	7.33%
Growth	\$1,783,874,659	86.29%
	TOTAL	\$2,067,342,735.00

Review Recommendation & Vote

	B	C	D	F	G	H	I
1	PROJECTS	RANKING	COST	INCLUDE IN 2023 BOND?	CHOSEN PROJECT COST	TOTAL	\$ 2,067,342,735
2	Elementary School No. 23	5	\$ 54,826,206	Y	\$ 54,826,206		
3	Elementary School No. 24	5	\$ 63,662,632	Y	\$ 63,662,632		
4	Elementary School No. 25	5	\$ 63,662,632	Y	\$ 63,662,632		
5	Elementary School No. 26	5	\$ 69,269,126	Y	\$ 69,269,126		
6	Elementary School No. 27	5	\$ 71,385,831	N			
7	Elementary School No. 28	5	\$ 77,718,753	N			
8	Replacement ES #1 (Justin Elementary)	5	\$ 61,943,523	Y	\$ 61,943,523		
9	Replacement ES #2 (Prairie View)	5	\$ 69,269,126	Y	\$ 69,269,126		
10	Middle School No. 8	5	\$ 145,945,516	Y	\$ 145,945,516		
11	Middle School No. 9	5	\$ 163,205,413	N			
12	Comprehensive High School No. 4	5	\$ 466,242,918	Y	\$ 466,242,918		
13	Comprehensive High School No. 5 - Design Fees	5	\$ 22,463,817	N			
14	Early Childhood Facility	5	\$ 166,068,116	Y	\$ 166,068,116		
15	Nance Addition	5	\$ 16,104,990	Y	\$ 16,104,990		
16	New Agriculture Center	5	\$ 42,480,000	Y	\$ 42,480,000		
17	Land Acquisition	5	\$ 50,000,000	Y	\$ 50,000,000		
18	Competition/Home Stadiums at Each HS Campus	5	\$ 283,850,000	Y	\$ 283,850,000		
19	Enlarge HS Cafeterias	5	\$ 30,723,163	Y	\$ 30,723,163		

The Work You Have Accomplished

Meeting 1: Tuesday, September 6

Legacy Learning Center

(Committee History, Purpose and Charge, Safety & Security)

Meeting 2: Tuesday, September 20

Berkshire Elementary School

(Demographics, Campus Utilization, Game of Growth)

Meeting 3: Tuesday, October 4

Justin Elementary School

(Construction Panel, Define Consensus, Weighting/Criteria Factors, Early Childhood Centers, Technology)

Meeting 4: Tuesday, October 18

Chisholm Trail Middle School

(Fine Arts, Athletics, CTE, Transportation)

Meeting 5: Tuesday, November 8

Adams Middle School

(Building Deficiencies, Growth Projects, School Finance 101, Bonding Capacity)

Meeting 6: Tuesday, November 29

Eaton High School

(Prioritization by Factors, Project Costs, Non-Negotiables)

Meeting 7: Tuesday, December 13

NISD Administration Building

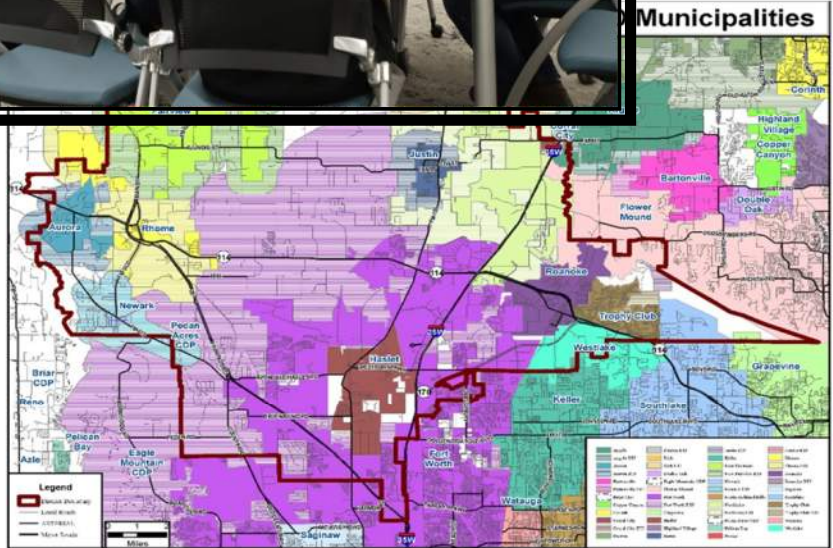
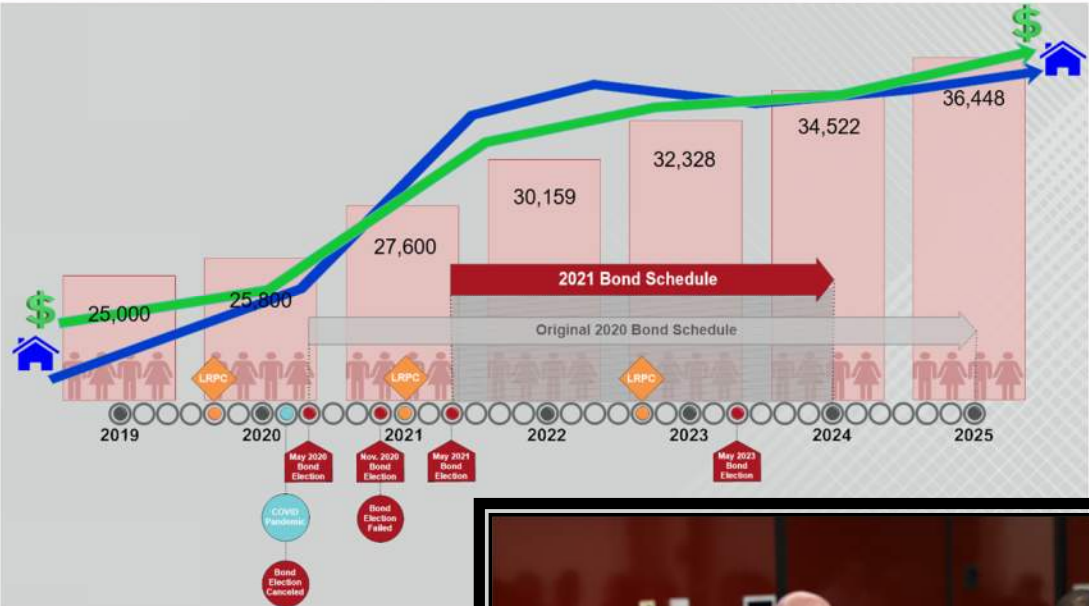
(Survey Results, Prioritization w/ Costs, Build-A-Bond)

Meeting 8: Tuesday, January 10

Legacy Learning Center

(Finalize Recommendation)

Meeting #1



Meeting #2



DFW New Home Ranking Report

ISD Ranked by Annual Closings – 2Q22

Rank	District Name	Annual Starts	Annual Closings	Inventory	VDL	Futures
1	NORTHWEST ISD*	4,519	3,608	2,508	3,040	36,070
2	DENTON ISD	2,817	2,753	2,160	3,124	31,273
3	FORNEY ISD	2,484	2,712	1,109	2,412	30,175
4	PROSPER ISD	2,844	2,630	2,323	3,032	21,195
5	FRISCO ISD	1,590	1,799	1,291	1,339	9,749
6	DALLAS ISD	2,031	1,614	1,834	2,128	6,257



Ten Year Forecast by Elementary Campus

Campus	Capacity	ENROLLMENT PROJECTIONS										
		Fall 2022/23	2023/24	2024/25	2025/26	2026/27	2027/28	2028/29	2029/30	2030/31	2031/32	2032/33
Beck Elementary	850	725	696	705	693	683	680	678	680	689	695	700
Berkshire Elementary	850	706	736	754	776	779	752	755	756	763	761	763
Clara Love Elementary	850	749	872	979	1,085	1,192	1,302	1,435	1,573	1,719	1,888	2,073
Cox Elementary	850	785	815	837	853	869	888	868	859	850	845	842
Curtis Elementary	850	680	738	760	780	783	761	762	770	778	781	787
Granger Elementary	850	749	715	685	649	650	663	669	672	677	680	678
Haslet Elementary	850	883	1,154	1,406	1,628	1,820	1,942	2,060	2,152	2,186	2,196	2,243
Hatfield Elementary	450/850	600	685	770	819	836	858	900	889	917	934	929
Hughes Elementary	850	660	672	690	694	694	711	713	709	709	710	709
Justin Elementary	650	603	644	720	797	871	959	1,050	1,138	1,240	1,330	1,433
Lakeview Elementary	650	543	548	545	548	573	589	599	609	612	616	619
Lance Elementary	850	821	950	1,136	1,283	1,442	1,587	1,710	1,812	1,861	1,898	1,988
Nance Elementary	650	518	525	541	579	613	638	659	684	688	696	707
Peterson Elementary	850	703	710	701	680	705	707	713	713	718	724	735
Prairie View Elementary	650	620	654	722	804	902	1,011	1,139	1,251	1,373	1,481	1,606
Roanoke Elementary	850	653	682	704	709	715	731	733	739	747	755	764
Sendera Ranch Elementary	850	680	583	574	569	577	591	648	700	748	798	852
Seven Hills Elementary	650	649	722	817	907	1,028	1,145	1,267	1,382	1,493	1,605	1,746
Schluter Elementary	850	701	749	796	870	968	1,044	1,141	1,195	1,254	1,318	1,394
Thompson Elementary	850	820	895	963	987	1,017	1,022	1,006	997	1,005	1,001	1,009
ELEMENTARY SCHOOL TOTALS	15,150	13,848	14,745	15,805	16,710	17,717	18,581	19,505	20,280	21,027	21,712	22,577
Elementary Absolute Growth		812	897	1,060	905	1,007	864	924	775	747	685	865
Elementary Percent Growth		6.23%	6.48%	7.19%	5.73%	6.03%	4.88%	4.97%	3.97%	3.68%	3.26%	3.98%

Yellow box = over 105% capacity
Green box = within 5% capacity

Meeting #3



LONG RANGE PLANNING
2019-2027 GOV. BOARD

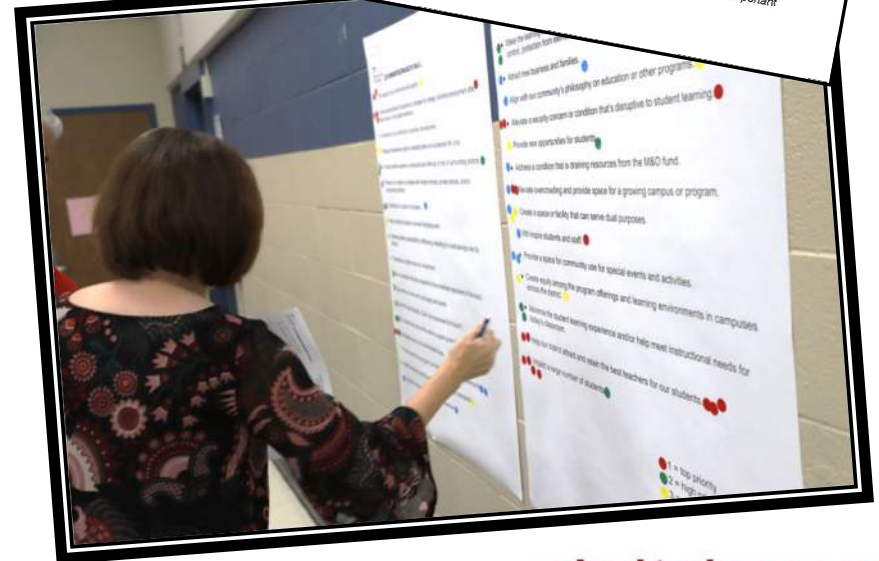
LET'S PRIORITIZE PROJECTS THAT...

- The majority of our community will support.
- Create opportunities for students to compete for college, full-time employment after high school, or the global workforce.
- Contribute to our community's economic development.
- Reduce maintenance costs by replacing items on a projected life cycle.
- Provide similar academic or extracurricular offerings to that of surrounding districts.
- Position our district to compete with charter schools, private schools, and/or surrounding districts.
- Contribute to a culture of inclusion.
- Help students succeed in an ever-changing world.
- Achieve greater sustainability or efficiency, resulting in a cost savings over its lifetime.
- Generate an optimal return on investment.
- Have a sensible lifecycle compared to the scheduled repayment of the bond.
- Align with our community's principles and beliefs.
- Allow for future flexibility. (Can it be repurposed for future?)
- The overall community will be able to support given the investment required.
- Are needed now or in the immediate future.
- Provide space for a program that delivers services to the community.
- Satisfy required building codes, disability, or safety standards.
- Support a program(s) that will produce revenue.

- Make the learning environment safer or more comfortable for students (i.e., climate control, protection from elements).
- Attract new business and families.
- Align with our community's philosophy on education or other programs.
- Alleviate a security concern or condition that's disruptive to student learning.
- Provide new opportunities for students.
- Address a condition that is draining resources from the M&O campus or program.
- Alleviate overcrowding and provide space for a growing campus or program.
- Create a space or facility that can serve dual purposes.
- Will inspire students and staff.
- Provide a space for community use for special events and activities.
- Create equity among the program offerings and learning environments in campuses across the district.
- Advance the student learning experience and/or help meet instructional needs for today's classroom.
- Help our district attract and retain the best teachers for our students.
- Impact a large number of students.

#1 **#2** **#3** **#4**

1 = top priority
 2 = high priority
 3 = very important
 4 = important



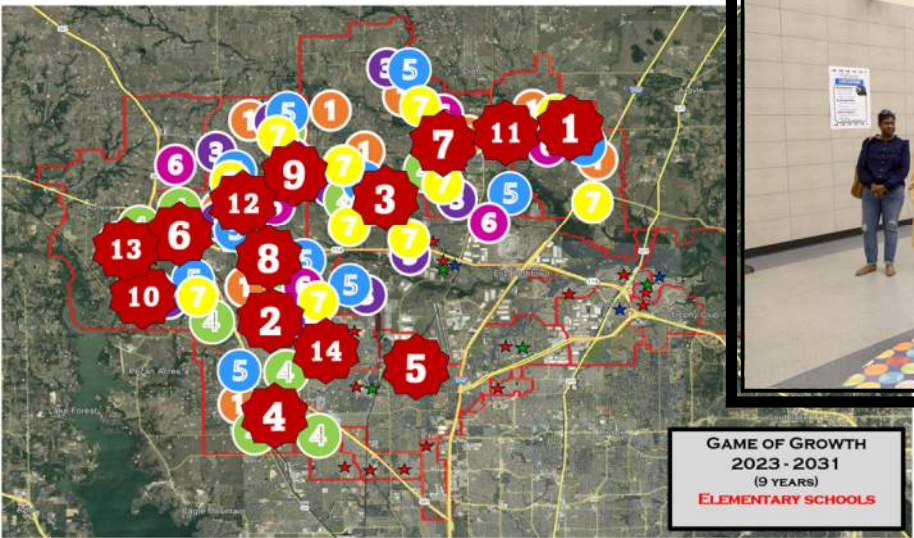
Meeting #4



Meeting #5

Air Conditioning Replacements

School	Grade A	Grade B	Grade C	Grade D	Grade F	Total
Beck Elementary School		4	37		31	72
Byron Nelson High School	36			18	3	57
Chisholm Trail Middle School	28	9		36	15	88
Clara Love Elementary School			11	74		85
Cox Elementary School			83			83
Granger Elementary School					82	82
Hughes Elementary School	12					12
JC Thompson Elementary School	7					7
Lakeview Elementary School						
Medlin Middle School	37					37
Nance Elementary School						
NISD Stadium Fieldhouse						
NISD Stadium Home Concession						
NISD Stadium Media						
NISD Stadium Visitor						
Peterson Elementary School						
Pike Middle School Gym						
Roanoke Elementary School						
Schluter Elementary School						
Sendra Ranch Elementary School	9					9
Steele Early College High School						
Tidwell Middle School	2					2
Wilson Middle School	2					2
Total	133					



Tax Rate Impact on NISD Homeowners

Year	Max I&S Tax Rate Increase	State Mandatory Hmstd Exemption	HOME VALUES ⁽²⁾							
			\$ 300,000	\$ 400,000	\$ 450,000	\$ 500,000	\$ 550,000	\$ 600,000	\$ 750,000	\$ 1,000,000
2023-24	<u>\$ 0.0010</u>	\$ 40,000 ⁽¹⁾	\$ 2.60	\$ 3.60	\$ 4.10	\$ 4.60	\$ 5.10	\$ 5.60	\$ 7.10	\$ 9.60

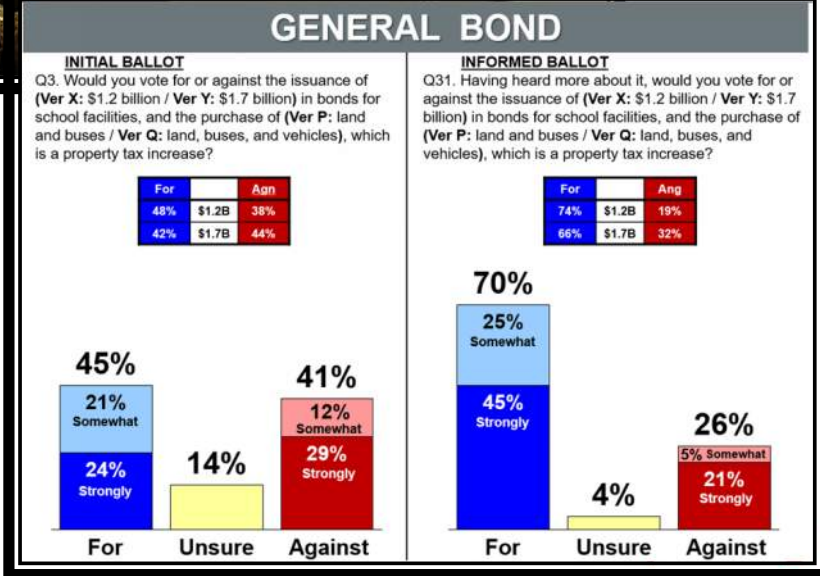
Meeting #7

PROJECT	PROJECT RATING TOTAL (WEIGHTED VALUE)	PROJECT	PROJECT RATING TOTAL (WEIGHTED VALUE)	PROJECT	PROJECT RATING TOTAL (WEIGHTED VALUE)
Elementary School No. 23	1.00	Elementary School No. 24	1.00	Elementary School No. 25	1.00
Elementary School No. 26	1.00	Elementary School No. 27	1.00	Elementary School No. 28	1.00
Replacement ES #1 (Justin Elementary)	1.00	Replacement ES #2 (Prairie View)	1.00	Middle School No. 8	1.00
Middle School No. 9	1.00	Comprehensive High School No. 4	1.00	Comprehensive High School No. 5 - Design Fees	1.00



Growth Projects: New Facilities + Land

#	PROJECT	COST
2	New Agriculture Center	\$42,480,000
3	Elementary School No. 23	\$54,826,206
4	Elementary School No. 24	\$63,662,632
5	Elementary School No. 25	\$63,662,632
6	Elementary School No. 26	\$69,269,126
7	Elementary School No. 27	\$71,385,831
8	Elementary School No. 28	\$77,718,753
9	Replacement ES #1 (Justin Elementary)	\$61,943,523
10	Replacement ES #2 (Prairie View)	\$69,269,128
11	Middle School No. 8	\$145,945,516
12	Middle School No. 9	\$163,205,413
13	Comprehensive High School No. 4	\$466,242,918
14	Comprehensive High School No. 5 - Design Fees	\$22,463,817



A close-up, low-angle shot of a black microphone on a stage. The microphone is the central focus, with its mesh grille clearly visible. The background is dark, featuring a row of out-of-focus stage lights in shades of red and white. The overall lighting is dim, with a strong red glow emanating from the background lights, creating a dramatic and focused atmosphere.

Committee Feedback

A close-up, low-angle shot of a black microphone on a stage. The microphone is the central focus, with its mesh grille clearly visible. The background is dark, punctuated by a row of out-of-focus stage lights at the top, which appear as soft, glowing circles in shades of red and white. The overall atmosphere is that of a live performance or a recording session.

Commitment Represents

Next Steps



Messaging

Submit your answers to the following prompts.

What will bond **supporters** say about the proposal?

What will **opposition** say about the proposal?

What **questions** will voters have about the proposal?

What **myths** or **inaccuracies** may emerge about the proposal?

Important Reminders

Long Range Planning Committee www.nidstxlrpc.org.

Construction www.nisdtxconstruction.org.

Bond www.nisdtxbond.org.

Answers to Frequently Asked Questions are usually available on one of these Web sites.

May Bond Election Timeline

January 23	LRPC Makes Recommendation to the Board
January 24??	Board of Trustees Workshop for discussion and questions
February 13	Board of Trustees May Call Bond Election
February 17	Deadline to Call Bond Election
April 6	Deadline to Register to Vote
April 24	Early Voting Begins
May 6	Election Day

LRPC Members please attend these meetings.
Check your email for reminders and updates.

Reminders

Mtg

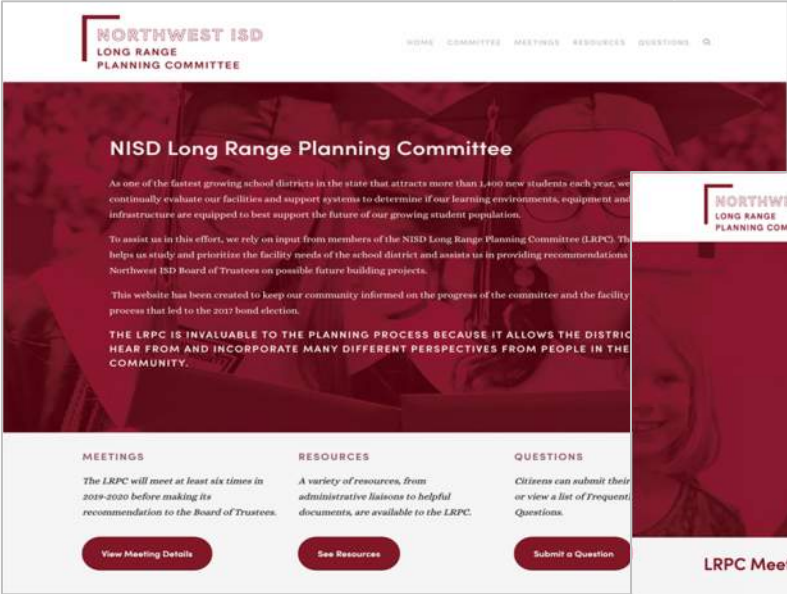
Date

Location

Recommendation

Monday, January 23

Administration Building



All committee materials are available at nisdtxlrpc.org



NORTHWEST ISD
**LONG RANGE
PLANNING**
COMMITTEE

Meeting #6
November 29, 2022

